



**CITY COMMISSION AGENDA**  
**Monday, April 5, 2021**  
**204 W. 11<sup>TH</sup> ST. – 5:00 P.M.**

JOHN GARCIA – MAYOR  
JAY DEE BRUMBAUGH – VICE MAYOR  
AARON THOMPSON – COMMISSIONER  
JJ HOWARD – COMMISSIONER  
GARY FARRIS – COMMISSIONER

- 
- 1. CALL TO ORDER**
    - A. Roll Call
    - B. Pledge of Allegiance
    - C. Approval of Agenda
  - 2. PUBLIC COMMENT**
  - 3. PRESENTATIONS & PROCLAMATIONS**
    - A. Lineman Appreciation Week
    - B. National 911 Telecommunicator Appreciation Week
  - 4. CONSENT AGENDA**
    - A. 03-15-2021 Commission Meeting Minutes
    - B. 03-22-2021 Special Meeting Minutes
    - C. Appropriation Ordinances 2021-07; 2021-07A; 2021-07B; 2021-P07; 2021-P07A
  - 5. ORDINANCES & RESOLUTIONS**
    - A. Resolution 1571 - Hazard Mitigation Plan
    - B. Resolution 1572 - 2021 GAAP Waiver
    - C. Resolution 1573 - 2021 Designating Depositories
  - 6. FORMAL ACTIONS**
    - A. Renewal of Property, Casualty and Liability Insurance
  - 7. REPORTS**
    - A. City Manager
      1. Public Transportation Grant
      2. 2022 Budget Calendar
      3. EagleMed Hangar Lease
    - B. City Commissioners
    - C. Mayor
    - D. Department & Community Reports
  - 8. ADJOURNMENT**
    - A. Next Regular Meeting: Monday, April 19, 2021

**NOTE:** Background information is available for review in the office of the City Clerk prior to the meeting. The Public Comment section is to allow members of the public to address the Commission on matters pertaining to any business within the scope of Commission authority and not appearing on the Agenda. Ordinance No. 1730 requires anyone who wishes to address the Commission on a non-agenda item to sign up in advance of the meeting and to provide their name, address, and the subject matter of their comments.



**PROCLAMATION**  
***City of Goodland, Kansas***

**“Lineman Appreciation Day”**  
April 18, 2021

**WHEREAS**, the City of Goodland celebrates the profession of an electrical lineman and wishes to honor its Electric Department personnel for their exemplary service to the City and its citizens; and

**WHEREAS**, this profession demands passion, dedication and ongoing training and requires our linemen to work the lines 24 hours a day, 365 days a year, to keep electricity flowing; and

**WHEREAS**, linemen must often work under dangerous conditions far from their families to construct and maintain the energy infrastructure of the City of Goodland; and

**WHEREAS**, linemen are often first responders during storms working to repair broken and damaged electrical lines under hazardous conditions in order to make the area safe for other public safety heroes; and

**WHEREAS**, linemen play a vital role in the lives of our citizens by maintaining and growing our electrical infrastructure; and they put their lives on the line every day by working with the many dangers of high voltage.

**NOW, THEREFORE**, I John Garcia, Mayor of the City of Goodland hereby proclaim April 18, 2021 as “Lineman Appreciation Day in Goodland” and I urge all citizens to remember the selfless work the City’s linemen do each day to keep our lights on.

**IN WITNESS WHEREOF**, I have hereunto set my hand and caused the seal of the CITY OF GOODLAND, KANSAS, to be affixed this 5th day of April 2021.

---

John Garcia, Mayor



## ***Proclamation***

### ***National 911 Telecommunicator Appreciation Week***

**April 11-17, 2021**

***Whereas*** emergencies can occur at any time that require law enforcement, fire or emergency medical services; and,

***Whereas*** when an emergency occurs the prompt response of law enforcement, firefighters and paramedics and EMTs is critical to the protection of life and preservation of property; and,

***Whereas*** the safety of our law enforcement officers, paramedics and EMTs and firefighters is dependent upon the quality and accuracy of information obtained from citizens who contact the Sherman County 911 Communications Center; and,

***Whereas*** 911 Telecommunicators are the first and most critical contact our citizens have with emergency services; and,

***Whereas*** 911 Telecommunicators of the Sherman County 911 Communications Center have contributed substantially to the apprehension of criminals, suppression of fires and treatment of patients; and,

***Therefore Be It Resolved*** that the City of Goodland declares the week of **April 11-17, 2021** to be

### **National 911 Telecommunicator Appreciation Week**

in the City of Goodland, in honor of the men and women whose diligence and professionalism keep our city and citizens safe.

Signed this \_\_\_\_ day of \_\_\_\_\_, 2021

---

Mayor, City of Goodland

**GOODLAND CITY COMMISSION**  
**Regular Meeting**

**March 15, 2021**

**5:00 P.M.**

Mayor John Garcia called the meeting to order with Vice-Mayor Jay Dee Brumbaugh (via telephone), Commissioner Aaron Thompson, Commissioner J. J. Howard and Commissioner Gary Farris responding to roll call.

Also present were Dustin Bedore – Director of Electric Utilities, Frank Hayes – Chief of Police, Neal Thornburg – Director of Water and Wastewater, Danny Krayca – Director of Parks and Mary Volk - City Clerk.

**Mayor Garcia led Pledge of Allegiance**

**Approval of Agenda – ON A MOTION** by Commissioner Howard to approve Agenda as presented **seconded** by Commissioner Farris. **MOTION carried on a VOTE of 5-0.**

**PUBLIC COMMENT**

**PRESENTATIONS & PROCLAMATIONS**

- A. Goodland Gary Day** – Mayor Garcia proclaimed April 1, 2021 as Goodland Gary Day in the City of Goodland by reading and signing proclamation.
- B. Sunflower Electric & Prairie Land Electric** – Cory Linville, Sunflower Electric, Vice President of Power Supply and Delivery stated, we are here to summarize what happened during the cold weather event last month and what we did to prepare for event. Sunflower Electric is a generation and transmission cooperative, wholly owned by six distribution properties. Prairie Land is one of the cooperatives. Kirk Girard, Prairie Land CEO is here if you have questions. We also have Erica Villarreal, Manager of Power Contracts from Sunflower Electric. Map shows the Southwest Power Pool (SPP) region. The SPP is a regional transmission organization where all power suppliers are members of SPP, who provides transmission service, transmission planning and wholesale market energy. The entire SPP area experienced this severe cold weather event and regional impacts of event were felt by everyone in the pool. SPP is a balancing authority for the entire region and with that responsibility they are responsible for matching generation to the demand for the entire region. Electricity is an instantaneous product where there has to be a constant match of generation to the usage by all users. In addition, they have to maintain adequate reserves to generate instantaneously. If a generator goes offline or there is a large swing it has to be accounted for, so SPP has to have energy to meet demand plus capacity for tendencies that may occur. SPP has to balance energy with all entities in region and understand what their load forecast is with generation available to serve that load. SPP coordinates with transmission operators to ensure demand and reserve requirements are balanced with generation. On February 9<sup>th</sup> SPP identified there was cold weather forecasted for region. Generators and operators started to take a more conservative approach to operation and defer anything that will put a unit at risk so that generation is available for cold weather. On February 14<sup>th</sup> SPP saw the following week there would be a potential capacity and energy shortfall so made a request to all members for conservation of energy. On February 15<sup>th</sup> SPP entered into an Energy Emergency Alert (EEA). Under EEA we recognize there is a lack of generation for load requirements. There are three levels of EEA, with increasing severity as levels increase. Under EEA1 all generation was committed and there is concern of not being able to meet reserve requirements. During the period of February 15<sup>th</sup> through 19<sup>th</sup>, SPP was in a Level 1 for almost thirty nine hours. EEA2 is the next level of emergency and during this period of time SPP remained at EEA2 for forty three hours and twenty minutes. EEA3 is highest level of emergency and is the period when SPP does not have adequate reserves. SPP was at this level for nine hours and seven minutes. For the first time in history, SPP was directed to curtail loads. As a transmission operator we were one of the entities directed to shed a percentage of our load. On February

MINUTES

Goodland City Commission

March 15, 2021

Page 2

15<sup>th</sup>, total SPP load shed was 610 MW for one hour and seven minutes. Sunflower's pro-rata portion of load shed 14 MW. All operator transmissions across the region were part of the load shed. The next morning, SPP issued an EEA3 again and shed 1,359 MW, where Sunflower's portion was 30 MW. Then 20 minutes later they increased load shed to 2,718 MW, with Sunflower's portion being 60 MW for two hours and twenty two minutes. That was four times the amount we were trained for and we did our best to rotate circuits to minimize time any location is out of power. Most of our customers were not out longer than an hour; however, because of the magnitude of the load shed a few were out longer. The important thing is we maintained your liability following the load shed directive and larger outages were averted. Mayor Garcia asked, when you elude to the fact there was a lack of generation resources to serve the region, that included all entities in SPP. Was that attributed to the fact there was not enough combination of natural gas, wind or nuclear power to serve region? Cory stated, that is accurate. Every day SPP looks at all generation for region and identifies load to pick cheapest resources to serve load. In this instance there was not enough generation to serve the load. There was a function of low supply because of generation unavailability due to lack of fuel supply and high demand of energy. A big enough area was impacted that we could not import from pools in neighboring regions. Year to date wind supplied 31 % of energy but during this event it was about 10%. The gap was primarily made up of coal and gas which were both challenged with weather elements. As the supply of natural gas dropped off and demand for power increased, prices for natural gas sky rocketed. Typically this time of year gas prices are \$2.50 per MMBTU, but it rose to \$1,000 during this event. Market Energy prices we pay for energy also sky rocketed. Natural gas prices play a big part in cost for power. Market energy prices this year are about \$20.00 but during event prices got as high as \$4,000. This was an extreme economic impact. Sunflower tries to protect themselves from this type of event. Since 2014, the highest price was \$100 MWH, but during this event it was at \$4,000 MWH. To hedge Sunflower looks at the disputable capacity from our coal fired generator because the price of coal is very steady, unlike natural gas. We can be assured that we can get energy from our coal fired plant for about \$20 MWH. Whenever that dispatchable capacity is Holcomb we know the power supply will be capped at this cost. We also have fixed price energy with renewable energy purchased power agreements, so with this energy resource we know what the price will be. Sunflower predicts the amount of energy we are going to get from coal and renewable resources and try to maintain that percent for the following twelve months. For February, March and April we anticipated 90% hedge from coal and renewable energy. During this event coal performed well but wind and solar were not available as anticipated which impacted our hedging. During the event, Holcomb was on line which reduced our exposure by about 70%, reducing our exposure to the \$4,000 MWH power. Unfortunately we did not have a lot of wind to help out. Power supply is cost versus risk balance. When you choose a power supplier, you will get a certain amount of resources. Typically the higher the cost for capacity, the lower the price for the energy. KMEA provides power to several municipalities in area. KMEA procures chunks of resources to hedge its cities against the energy market price to meet requirements. The cities can structure their portfolio according to their cost-risk tolerance. With Sunflower hedged at 70% with Holcomb, KMEA municipalities were exposed. Market price of energy follows cost of gas. Sunflower's estimated costs during event was \$28 MWH. Holcomb's hedge during this event was advantageous to Sunflower. Goodland's energy consumption in February was 4,487,883 KWH at \$.284 KWH which equates to \$1,274,000 in incremental costs. When looking at a public power supply, have to look at cost and the hedging ability. Calculating Sunflower's energy cost adjustment (ECA), we identify the variable cost of energy including fuel costs, purchase power agreements and settlements in the SPP integrated marketplace. January was a normal month. To calculate ECA, Sunflower buys the energy needed to serve our load at the beginning of the month from SPP integrated marketplace. We sell our resources into the market based on their production costs and revenues received from that offset the cost of energy.

MINUTES

Goodland City Commission

March 15, 2021

Page 3

When costs are higher than what we can sell energy, it bumps the ECA. February market costs to serve Sunflower's load was almost \$600 MWH. The magnitude of that price was \$194 for 325,099 MWH and costs for previous twenty seven months to serve 10,443,297 MWH was \$195. Holcomb was important in keeping costs relatively under control. Holcomb margins of \$116 were used to offset and save on costs. Do anticipate we may receive some additional make whole credits in next few months which will be credited back to customers. Mayor Garcia asked, how many days did arctic wave last? Cory stated, the cold temperatures started the 10<sup>th</sup> and 11<sup>th</sup> but the coldest temperatures were the 14<sup>th</sup> through 19<sup>th</sup>. By the 20<sup>th</sup> it warmed up enough that prices returned to normal so no need to remain on emergency. Mayor Garcia asked, how long did Holcomb generate? Cory stated, we began running right before the event and ran until end of month. Mayor Garcia asked, you say your production costs were \$22 MWH? Cory stated, our production costs are in the \$20 to \$22 MWH range. Mayor Garcia asked, what was the open market price at that time? Cory stated, we buy all our power from integrated marketplace but sold from Holcomb about 70% of our energy requirements. So 70% of our load cost us \$22 MWH and 30% cost us about \$2,000. Vice-Mayor Brumbaugh stated, I do not like the fact we depend on whether the wind blows, ice freezes on the blades or hedging but I feel like we got a good deal with the bill we received. Commissioner Howard stated, this shows we cannot be 100% green, we need fossil fuel. Cory stated, FERC and NERC are opening investigations for both the natural gas and electric side of business to see what can be done to prevent this event in the future. Sunflower is looking at hedging capabilities for future, but it is just like insurance, the more you protect yourself the more expensive it becomes. FERC will be having some future regulations from this event. We are looking at what can make it better. Texas was worse off than us. Part of the investigation is where did all the money go and should prices have really been that high. Commissioner Thompson stated, many factors that happened were out of Sunflower's control. My concern is Goodland and our ability to create our own power and not pulling on grid. How can contract be renegotiated for future? Cory stated, there is discretion to be had as to how you can offset costs from current contract. We can discuss options if you want to renegotiate the contract. Vice-Mayor Brumbaugh asked, how many municipalities have a contract like ours and get credits for generating? Cory stated, all municipal contracts are the same as Goodland's where we can call on you to generate. Commissioner Farris stated, the chance of this occurring again is slim. Cory stated, we hope so, but do not know for sure. Since 2014, the highest market prices SPP has seen were \$100 MWH, during this event they were \$4,000. Mayor Garcia asked, explain how Open Access Transmission Tariff (OATT) works? Cory stated, OATT is the tariff that governs how SPP provides transmission service to the network. It includes how you procure service, identifies how costs of transmission service are calculated and allocated to customers and how transmission planning process should work. Advantage of regionalized planning is to coordinate more efficient transmission service. The tariff also identifies protocols associated with wholesale energy market along with a variety of other things. The main things it provides is how SPP provides transmission service, how costs are determined and how costs are allocated. Recently Sunflower has been heavily involved to develop a better and fairer way to allocate costs with transmission upgrades from wind energy. Mayor Garcia stated, in the SPP there are other agencies that offer the product Sunflower does. The diversity in their contract language allows municipalities to buy cheaper power at any time from other sources without penalties. In the language in Sunflower's contract, is that a provision we can incorporate? Cory stated, you get access to the low price on energy but you also get a cap when prices go higher. Mayor Garcia stated, it has been conveyed to the commission you are entertaining possibility of extending contract five years and are willing to disregard these extraordinary costs. Cory stated, we have extension options that have a reduction in contract prices. The costs assessed would reduce the contract for a savings. Mayor Garcia stated, our contract is in effect until December 31, 2026 then we operate on a year to year basis until we determine what we want to do. What is termination notice needed on contract? Cory stated, a

## MINUTES

Goodland City Commission

March 15, 2021

Page 4

year but we can renegotiate sooner if you would like. Mayor Garcia stated, section 5.6 of the contract discusses addition and deletion of credited generation capacity with one year written notice to Sunflower. What is that and how would we know a year in advance what markets are doing? Cory stated, Sunflower buys your capacity, which is creditable power; we have to have creditable power plus 12 % for customer. We pay you for the capacity. If you have planned retirement of an asset we have to be notified to take that generation out of our plan to ensure capacity claimed is there to meet peak load. Mayor Garcia stated, we were charged \$9.85 for demand all months except during summer, you charge \$14.07? Cory stated, that is the demand portion and non-summer months are charged lower than summer months when the demand is higher. It is designed to set lower demand during peak months. Mayor Garcia stated, in 2012 the City no longer bought from Sunflower but Prairie Land was added to agreement for us to buy power? Cory stated, their power supply comes from Sunflower. Mayor Garcia stated, from 2012 the adder fee has increased, how do you bill Goodland? Kirk stated, at the time they built the MWH rate plus adder, the adder stayed at the coop level because the coop and Goodland became members of Prairie Land. Going through Sunflower we assume a portion of the risk. I understood at time the adder was added, Goodland became a member of Prairie Land. When your contract ends we still have the risk of the load. Cory stated, prior to 2012, there was an adder in your Sunflower contract, this is just more transparent to see costs. Mayor Garcia stated, I believe the Commission would entertain a proposal from Sunflower and recommend you high light ways that are equitable for City as well as Sunflower. In order to make decisions that best serves our customer's you need to understand the contract has to be just as equitable for the City. Commissioner Thompson stated, I am open for conversation. Kirk stated, I have talked to Alan about renegotiating, he did not want to rush it.

## CONSENT AGENDA

- A. **03/01/21 Commission Meeting Minutes**
- B. **03/08/21 Special Commission Meeting Minutes**
- C. **Appropriation Ordinances: 2021-06, 2021-06A, and 2021-P06**

**ON A MOTION** by Commissioner Thompson to approve Consent Agenda **seconded** by Commissioner Howard. **MOTION carried on a VOTE of 5-0.**

## ORDINANCES AND RESOLUTIONS

- A. **Ordinance 1738: Extraordinary Power Costs** – Mayor Garcia stated, the Commission received information from the City Manager showing customer type and percentage breakdown by type reflecting proposal approved by Commission. If we leave ordinance as approved, residential customers are paying 7.9% generating \$207,552 per year, small commercial is 5.70% with \$53,760 and large commercial are 1.1% for \$23,400. Total estimated revenue generated per year is \$284,712 to extend over four years. Commissioner Thompson stated, I still am in favor of \$8 across the board. The individual break down shows more of an impact. Working off the estimates, this would require forty nine months to pay off extraordinary costs. The cost for residential is \$384, small commercial is \$320 and large commercial is \$1,440, which is a substantial increase. The College has twenty four meters so their additional cost over four years is \$20,000. If we charge \$8 for all customers, it is less than \$12,000 for the College and extends term five months. This is a large cost; are we trying to split up as evenly as we can across the community or are we trying to base it on small and large commercial customer's with higher rates because they have more consumption. Some residential homes use more than some small businesses. We are playing a balancing game on how costs should be spread out. Mayor Garcia stated, at this point we do not know our total costs. It is hard to make a decision on how to diversify costs. When will we know where the impact of our load is? Dustin stated, residential is the bulk of our power.

Commissioner Farris stated, businesses should pay more because charged less per KWH. Dustin stated, we tried to make as simple as we could and felt people could absorb this additional cost amount. Your largest user has one meter where the college has twenty four meters. Commissioner Howard stated, my business uses less than my residence. Vice-Mayor Brumbaugh stated, I do not feel we have enough information at this time. I feel need to table until we get more information on usage. Mayor Garcia stated, I am in favor of tabling item. Commissioner Thompson asked, how deep do you want to dig into usage? We need to set up time to look into numbers. Mayor Garcia asked, the fee has to be set by April 1, when new billing cycle begins. Mary stated, the ordinance has to be approved and published before April 1 to be on next bill. Consensus of Commission is to table item until receive more information.

#### FORMAL ACTIONS

- A. **IFB 2021-02 Bid Award** – Mayor Garcia stated, I am comfortable with staff recommendation to accept the bid from Dan Brenner Ford. **ON A MOTION** by Commissioner Farris to approve the bid from Dan Brenner Ford in the amount of \$30,020 **seconded by** Commissioner Thompson. **MOTION carried on a VOTE of 5-0.**

#### REPORTS

- A. **City Manager – Absent, No Report.**  
B. **City Commissioners**  
**Commissioner Thompson – 1. No Report**  
**Vice-Mayor Brumbaugh – 1. No Report**  
**Commissioner Howard - 1. Thank you to the employees for your hard work.**  
**Commissioner Farris – 1. No Report**  
C. **Mayor – 1. No Report**

**ADJOURNMENT WAS HAD ON A MOTION BY** Commissioner Thompson **seconded by** Commissioner Farris. **Motion carried by unanimous VOTE, meeting adjourned at 6:20 p.m. Next regular Commission meeting is scheduled for April 5, 2021.**

ATTEST:

\_\_\_\_\_  
**John Garcia, Mayor**

\_\_\_\_\_  
**Mary P. Volk, City Clerk**



**GOODLAND CITY COMMISSION**  
**Special Commission Meeting**

**March 22, 2021**

**5:00 P.M.**

Mayor John Garcia called the meeting to order with Vice-Mayor Jay Dee Brumbaugh, Commissioner Aaron Thompson, Commissioner J. J. Howard and Commissioner Gary Farris responding to roll call.

Also present were Dustin Bedore – Director of Electric Utilities, Frank Hayes - Police Chief, Kenton Keith – Director of Streets and Facilities, Neal Thornburg – Director of Water and Wastewater, Danny Krayca – Director of Parks, Mary Volk - City Clerk, and Alan Lanning - City Manager.

**Mayor Garcia led Pledge of Allegiance**

**DISCUSSION**

- A. Ordinance 1738 – Extraordinary Power Costs** – Mayor Garcia stated, Commission has asked for additional utility information to determine where the major portion of the expense incurred. Today we received proposals for two, three and four years based on consumption. Alan stated, I have reviewed the information. When we originally discussed the event, our objective was to keep it relatively simple by charging an additional \$8 per customer. I sent Commission an email with consumption information, but I did not expect it to influence the decision. I was trying to make comparison based average monthly bill for each customer type if everyone paid 7.9% of the average bill. Today's information was broken down further based on consumption and usage. Vice-Mayor Brumbaugh stated, the problem I had before was that after we got more information, I could not reconcile the breakdown by customer category because usage varied a lot within each category. There are some residences that use more than a small business. I decided to forget about structuring the charge by category and go off usage. I feel the information today is more fair and in line as to where the burden of costs should go. I am open to which term in the proposal the Commission would like to approve. Mary stated, so the Commission is aware, I believe this proposal affects the school and NWT College more than previous proposals. Vice-Mayor Brumbaugh stated, I have been talking to Ben about the charge and he was satisfied how it will be spread out. He would like the longer term. It does not change a lot for the school and they are fine as long as it does not hit in one budget cycle. I feel basing on usage is fairer. Mayor Garcia stated, out of 2,162 residential consumers, 2,093 fall under 0-1,000 kWh category. Shauna Johnson Deputy City Clerk stated, some of those customers are small commercial; about 1,700 in that category are residential. Mayor Garcia stated, this proposal illustrates where the major consumption is and targets usage consumed by customer, no matter the category. Whether we approve the three or four year proposal, the cost is stretched out for our customers which is more equitable and less of an impact. Commissioner Thompson stated, I still look at this as an extraordinary circumstance that no one was aware of until after the fact. It is all speculation, but if people knew ahead of time would they have conserved more electricity? I feel usage is fair but I also feel all this usage was unaccounted for and no one knew this was going to happen. I am still personally in favor with the charge of \$8 across the board. I do feel if the Commission wants to break down the costs in tiers, this is fairer but I still am in favor of one charge. Commissioner Howard stated, the City as a whole did not have more usage for the month, it was the time frame of the event and we were gouged with costs. I am still in favor of \$8 across the board. I understand the break out by usage but the City had the same usage but paid higher prices. If we approve this proposal, I am in favor of either the three or four year proposal. Mayor Garcia stated, the City got hit with a large cost that was out of our control. Of the \$1,274,000 in costs we are recouping, we are reimbursed generation costs so the impact will be less. Commissioner Howard stated, the additional charge will just sunset earlier. Alan stated, my thought was not a proposal or

MINUTES

Goodland City Commission

March 22, 2021

Page 2

to confuse the issue. I felt it should be treated like a sales tax, based on what you spend. No one has same usage every month. It is not much different on the payoff, but it is basically who is paying the cost based on usage. The hard part is trying to apply a logical solution to an extraordinary circumstance. In my information based on a percentage of usage, the real impact is with large commercial customers. Mayor Garcia stated, your proposal has a large impact on large commercial customers. I agree the information on today's proposal is more reasonable based on the three or four year term. I want the effect on citizens to be as little as possible but still based on consumption. The proposal for four years is more complimentary. Vice-Mayor Brumbaugh stated, I like the four year proposal based on consumption. I am listening to the schools and feel this is lessening the impact on them over time. Commissioner Thompson asked, these numbers are based on usage for the entire month? Shauna stated, yes the month of February. **ON A MOTION by Vice-Mayor Brumbaugh to approve the four year proposal based on consumption as presented seconded by Commissioner Farris. MOTION carried on a VOTE of 4-1 with Commissioner Thompson casting the dissenting vote.** Mayor Garcia stated, I appreciate staff and the hard work you have done to come up with a plan. Vice-Mayor Brumbaugh stated, I appreciate staff providing all the information.

**ADJOURNMENT WAS HAD ON A MOTION Vice-Mayor Brumbaugh seconded by Commissioner Howard. Motion carried by unanimous VOTE, meeting Adjourned at 5:32 p.m.**

ATTEST:

\_\_\_\_\_  
**John Garcia, Mayor**

\_\_\_\_\_  
**Mary P. Volk, City Clerk**

INVOICE NO	LN	DATE	PO NO	REFERENCE	TRACK		1099	NET	CHECK	PD DATE
					CD	GL ACCOUNT				
-----										
				2652 911 CUSTOM						
44575	1	3/08/21		DUAL T-RAIL MOUNT		11-03-4020		337.75	63223	4/05/21
				911 CUSTOM				----- 337.75		
-----										
				3784 AMAZON CAPITAL SERVICES						
16143KTR1FXN	1	3/10/21		NAME PLATE, POSTITS, PENS		11-02-3120		42.12	63224	4/05/21
1HQ6LDJXMWV	1	3/26/21	19216	8 CH MICROPHONE/SNAKE CABLE		11-02-3060		447.35	63224	4/05/21
				AMAZON CAPITAL SERVICES				----- 489.47		
-----										
				2871 AMERICAN FAMILY LIFE						
PR20210312	1	3/12/21		AFLAC CANCER		11-00-0012	N	79.89	3045283	3/19/21 E
PR20210312	2	3/12/21		AFLAC CANCER		15-00-0012	N	16.02	3045283	3/19/21 E
PR20210312	3	3/12/21		AFLAC ACCIDENT		11-00-0012	N	149.40	3045283	3/19/21 E
PR20210312	4	3/12/21		AFLAC ACCIDENT		15-00-0012	N	116.64	3045283	3/19/21 E
PR20210312	5	3/12/21		AFLAC ACCIDENT		21-00-0012	N	42.18	3045283	3/19/21 E
PR20210312	6	3/12/21		AFLAC ACCIDENT		23-00-0012	N	14.28	3045283	3/19/21 E
PR20210312	7	3/12/21		AFLAC DENTAL		15-00-0012	N	17.70	3045283	3/19/21 E
PR20210312	8	3/12/21		AFLAC ST DISB		11-00-0012	N	23.76	3045283	3/19/21 E
PR20210312	9	3/12/21		AFLAC ST DISB		15-00-0012	N	105.00	3045283	3/19/21 E
PR20210312	10	3/12/21		AFLAC ST DISB		23-00-0012	N	17.82	3045283	3/19/21 E
PR20210312	11	3/12/21		AFLAC LIFE RIDR		15-00-0012	N	2.76	3045283	3/19/21 E
PR20210312	12	3/12/21		AFLAC LIFE		11-00-0012	N	18.46	3045283	3/19/21 E
PR20210312	13	3/12/21		SPEC HLTH EVENT		11-00-0012	N	20.10	3045283	3/19/21 E
PR20210312	14	3/12/21		AFLAC HOSP CONF		11-00-0012	N	30.72	3045283	3/19/21 E
PR20210312	15	3/12/21		AFLAC HOSP CONF		21-00-0012	N	26.28	3045283	3/19/21 E
PR20210326	1	3/26/21		AFLAC CANCER		11-00-0012	N	79.89	3045292	4/02/21 E
PR20210326	2	3/26/21		AFLAC CANCER		15-00-0012	N	16.02	3045292	4/02/21 E
PR20210326	3	3/26/21		AFLAC ACCIDENT		11-00-0012	N	130.38	3045292	4/02/21 E
PR20210326	4	3/26/21		AFLAC ACCIDENT		15-00-0012	N	116.64	3045292	4/02/21 E
PR20210326	5	3/26/21		AFLAC ACCIDENT		21-00-0012	N	42.18	3045292	4/02/21 E
PR20210326	6	3/26/21		AFLAC ACCIDENT		23-00-0012	N	14.28	3045292	4/02/21 E
PR20210326	7	3/26/21		AFLAC DENTAL		15-00-0012	N	17.70	3045292	4/02/21 E
PR20210326	8	3/26/21		AFLAC ST DISB		11-00-0012	N	23.76	3045292	4/02/21 E
PR20210326	9	3/26/21		AFLAC ST DISB		15-00-0012	N	105.00	3045292	4/02/21 E
PR20210326	10	3/26/21		AFLAC ST DISB		23-00-0012	N	17.82	3045292	4/02/21 E
PR20210326	11	3/26/21		AFLAC LIFE RIDR		15-00-0012	N	2.76	3045292	4/02/21 E
PR20210326	12	3/26/21		AFLAC LIFE		11-00-0012	N	18.46	3045292	4/02/21 E
PR20210326	13	3/26/21		SPEC HLTH EVENT		11-00-0012	N	20.10	3045292	4/02/21 E
PR20210326	14	3/26/21		AFLAC HOSP CONF		11-00-0012	N	30.72	3045292	4/02/21 E
PR20210326	15	3/26/21		AFLAC HOSP CONF		21-00-0012	N	26.28	3045292	4/02/21 E
				AMERICAN FAMILY LIFE				----- 1343.00		
-----										
				1389 AMERICAN FID						
PR20210312	1	3/12/21		AF CANCER AT		11-00-0012	N	23.00	3045280	3/19/21 E
PR20210312	2	3/12/21		AF CANCER AT		15-00-0012	N	17.48	3045280	3/19/21 E
PR20210312	3	3/12/21		AF CANCER AT		21-00-0012	N	8.57	3045280	3/19/21 E
PR20210312	4	3/12/21		AMER FID CANCER		11-00-0012	N	168.14	3045280	3/19/21 E
PR20210312	5	3/12/21		AMER FID CANCER		15-00-0012	N	122.26	3045280	3/19/21 E
PR20210312	6	3/12/21		AMER FID CANCER		21-00-0012	N	23.34	3045280	3/19/21 E
PR20210312	7	3/12/21		AMER FID LIFE		11-00-0012	N	164.91	3045280	3/19/21 E
PR20210312	8	3/12/21		AMER FID LIFE		15-00-0012	N	314.81	3045280	3/19/21 E

INVOICE NO	LN	DATE	PO NO	REFERENCE	TRACK		1099	NET	CHECK	PD DATE
					CD	GL ACCOUNT				
-----										
1389 AMERICAN FID										
PR20210312	9	3/12/21		AMER FID LIFE		21-00-0012	N	97.46	3045280	3/19/21 E
PR20210312	10	3/12/21		AMER FID LIFE		23-00-0012	N	80.25	3045280	3/19/21 E
PR20210312	11	3/12/21		AM FID ACCIDENT		11-00-0012	N	92.75	3045280	3/19/21 E
PR20210312	12	3/12/21		AM FID ACCIDENT		15-00-0012	N	78.95	3045280	3/19/21 E
PR20210312	13	3/12/21		AM FID ACCIDENT		21-00-0012	N	17.45	3045280	3/19/21 E
PR20210312	14	3/12/21		AM FID HOSPITAL		15-00-0012	N	26.99	3045280	3/19/21 E
PR20210312	15	3/12/21		AM FID HOSPITAL		21-00-0012	N	15.93	3045280	3/19/21 E
PR20210312	16	3/12/21		AM FD DISABILTY		11-00-0012	N	69.88	3045280	3/19/21 E
PR20210312	17	3/12/21		AM FD DISABILTY		15-00-0012	N	18.36	3045280	3/19/21 E
PR20210312	18	3/12/21		AM FD DISABILTY		21-00-0012	N	34.68	3045280	3/19/21 E
PR20210312	19	3/12/21		AM FD DISABILTY		23-00-0012	N	24.48	3045280	3/19/21 E
PR20210312	20	3/12/21		AF CRITICAL CR		11-00-0012	N	16.59	3045280	3/19/21 E
PR20210312	21	3/12/21		AF CRITICAL CR		15-00-0012	N	9.74	3045280	3/19/21 E
PR20210326	1	3/26/21		AF CANCER AT		11-00-0012	N	19.50	3045289	4/02/21 E
PR20210326	2	3/26/21		AF CANCER AT		15-00-0012	N	16.15	3045289	4/02/21 E
PR20210326	3	3/26/21		AF CANCER AT		21-00-0012	N	9.90	3045289	4/02/21 E
PR20210326	4	3/26/21		AMER FID CANCER		11-00-0012	N	168.14	3045289	4/02/21 E
PR20210326	5	3/26/21		AMER FID CANCER		15-00-0012	N	118.65	3045289	4/02/21 E
PR20210326	6	3/26/21		AMER FID CANCER		21-00-0012	N	26.95	3045289	4/02/21 E
PR20210326	7	3/26/21		AMER FID LIFE		11-00-0012	N	164.91	3045289	4/02/21 E
PR20210326	8	3/26/21		AMER FID LIFE		15-00-0012	N	302.52	3045289	4/02/21 E
PR20210326	9	3/26/21		AMER FID LIFE		21-00-0012	N	109.75	3045289	4/02/21 E
PR20210326	10	3/26/21		AMER FID LIFE		23-00-0012	N	80.25	3045289	4/02/21 E
PR20210326	11	3/26/21		AM FID ACCIDENT		11-00-0012	N	92.75	3045289	4/02/21 E
PR20210326	12	3/26/21		AM FID ACCIDENT		15-00-0012	N	78.95	3045289	4/02/21 E
PR20210326	13	3/26/21		AM FID ACCIDENT		21-00-0012	N	17.45	3045289	4/02/21 E
PR20210326	14	3/26/21		AM FID HOSPITAL		15-00-0012	N	26.99	3045289	4/02/21 E
PR20210326	15	3/26/21		AM FID HOSPITAL		21-00-0012	N	15.93	3045289	4/02/21 E
PR20210326	16	3/26/21		AM FD DISABILTY		11-00-0012	N	69.88	3045289	4/02/21 E
PR20210326	17	3/26/21		AM FD DISABILTY		15-00-0012	N	18.36	3045289	4/02/21 E
PR20210326	18	3/26/21		AM FD DISABILTY		21-00-0012	N	34.68	3045289	4/02/21 E
PR20210326	19	3/26/21		AM FD DISABILTY		23-00-0012	N	24.48	3045289	4/02/21 E
PR20210326	20	3/26/21		AF CRITICAL CR		11-00-0012	N	16.59	3045289	4/02/21 E
PR20210326	21	3/26/21		AF CRITICAL CR		15-00-0012	N	9.74	3045289	4/02/21 E
								-----		
AMERICAN FID								2848.54		
1390 AMERICAN FIDELITY										
PR20210312	1	3/12/21		AF MED REIMBURS		11-00-0012	N	375.00	3045281	3/19/21 E
PR20210312	2	3/12/21		AF MED REIMBURS		15-00-0012	N	202.01	3045281	3/19/21 E
PR20210312	3	3/12/21		AF MED REIMBURS		21-00-0012	N	186.73	3045281	3/19/21 E
PR20210312	4	3/12/21		AF MED REIMBURS		23-00-0012	N	25.00	3045281	3/19/21 E
PR20210326	1	3/26/21		AF MED REIMBURS		11-00-0012	N	375.00	3045290	4/02/21 E
PR20210326	2	3/26/21		AF MED REIMBURS		15-00-0012	N	186.66	3045290	4/02/21 E
PR20210326	3	3/26/21		AF MED REIMBURS		21-00-0012	N	202.08	3045290	4/02/21 E
PR20210326	4	3/26/21		AF MED REIMBURS		23-00-0012	N	25.00	3045290	4/02/21 E
								-----		
AMERICAN FIDELITY								1577.48		
1795 BERRY TRACTOR & EQUIPMENT										
02091497	1	3/05/21	17638	BIT PLANER & WHEEL SAW		11-11-3060		421.25	63225	4/05/21
								-----		
BERRY TRACTOR & EQUIPMENT								421.25		

INVOICE NO	LN	DATE	PO NO	REFERENCE	TRACK		1099	NET	CHECK	PD DATE
					CD	GL ACCOUNT				
-----										
3865 BIGFOOT HOLSTERS LLC										
2003	1	3/11/21	19057	TASER ATTACH PLATE KITS		11-03-4020		320.00	63226	4/05/21
								-----		
								320.00		
374 BLACK HILLS ENERGY										
GEN21-136	1	3/10/21		GAS CHARGES		21-40-2100		322.73	63220	3/23/21
GEN21-137	1	3/10/21		GAS CHARGES		11-02-2100		130.25	63220	3/23/21
GEN21-138	1	3/10/21		GAS CHARGES		15-44-2100		112.69	63220	3/23/21
GEN21-138	2	3/10/21		GAS CHARGES		21-40-2100		112.68	63220	3/23/21
GEN21-139	1	3/10/21		GAS CHARGES WOLAK BUILDING		11-07-2100		421.84	63220	3/23/21
GEN21-140	1	3/23/21		PD GAS CHARGES		11-03-2100		698.69	63227	4/05/21
GEN21-141	1	3/26/21		POWER PLANT GAS CHARGES		15-40-2090		398.27	63227	4/05/21
GEN21-142	1	3/22/21		GAS CHARGES CEMETERY		11-19-2100		193.78	63227	4/05/21
								-----		
								2390.93		
71 BLUE CROSS - BLUE SHIELD										
PR20210326	1	3/26/21		BCBS S300/SHIP		11-00-0012	N	14.84	3045285	4/02/21 E
PR20210326	2	3/26/21		BCBS S300/SHIP		15-00-0012	N	23.25	3045285	4/02/21 E
								-----		
								38.09		
133 BSN SPORTS										
911980677	1	3/15/21	19376	IN GROUND FRISBEE/DISC GOLF		26-01-4010		2091.96	63228	4/05/21
								-----		
								2091.96		
519 CITY OF GOODLAN										
PR20210326	1	3/26/21		TECHNOLOGY		15-00-0012	N	15.00	3045286	4/02/21 E
								-----		
								15.00		
1880 CITY OF GOODLAND-REFUND A										
GEN21-143	1	4/05/21		ELECTRIC DEPOSIT REFUND		20-01-5060		1400.00	63229	4/05/21
GEN21-143	2	4/05/21		WATER DEPOSIT REFUND		22-01-5070		800.00	63229	4/05/21
GEN21-158	1	3/31/21		ELECTRIC DEPOSIT REFUND		20-01-5060		950.00	63229	4/05/21
GEN21-158	2	3/31/21		WATER DEPOSIT REFUND		22-01-5070		950.00	63229	4/05/21
								-----		
								4100.00		
122 COMMERCIAL SIGN COMPANY I										
30833	1	3/08/21		GRAPHICS FIRE CHIEF VEHICHL		36-01-4010		1350.00	63230	4/05/21
30852	1	3/19/21	19560	INTERIOR LAMINATED PRINTS		03-01-2140		1335.00	63230	4/05/21
								-----		
								2685.00		
1346 DELL MARKETING L.P.										
10471292805	1	3/04/21	19215	SERVER R740XD SERVER RAILS		36-01-4010		6160.00	63231	4/05/21
								-----		
								6160.00		
2682 DESIGNS										
8432-34	1	3/24/21		EMBORDER SHIRTS/PANTS		15-42-3160	M	8.28	63232	4/05/21

INVOICE NO	LN	DATE	PO NO	REFERENCE	TRACK		1099	NET	CHECK	PD DATE
					CD	GL ACCOUNT				
-----										
				2682 DESIGNS						
				DESIGNS				8.28		
				3800 EMC INSURANCE COMPANIES						
L-15691621	1	3/10/21		PREMIUM		21-40-2060		459.95	63221	3/26/21
L-15691621	2	3/10/21		PREMIUM		21-42-2060		459.95	63221	3/26/21
L-15691621	3	3/10/21		PREMIUM		23-41-2060		459.95	63221	3/26/21
L-15691621	4	3/10/21		PREMIUM		23-41-2060		459.95	63221	3/26/21
L-15691621	5	3/10/21		PREMIUM		15-40-2060		6209.26	63221	3/26/21
L-15691621	6	3/10/21		PREMIUM		15-42-2060		6209.26	63221	3/26/21
L-15691621	7	3/10/21		PREMIUM		15-44-2060		919.89	63221	3/26/21
L-15691621	8	3/10/21		PREMIUM		11-02-2060		7819.05	63221	3/26/21
				EMC INSURANCE COMPANIES				22997.26		
				1926 F.E. MORAN INC						
1396180	1	2/22/21	19553	SERVICE CHARGE/TRIP/WIRE		11-17-2140		222.35	63233	4/05/21
				F.E. MORAN INC				222.35		
				3866 FAIR ISLE PRESERVATION						
2021.1.2	1	3/22/21	19559	BLUE BOARD SHEETS		11-17-3120		355.20	63234	4/05/21
				FAIR ISLE PRESERVATION				355.20		
				211 FARM PLAN						
1931796	1	2/24/21		3/8" MEGA FLEX & BARB SWIVEL		15-42-3060		62.44	63235	4/05/21
1931964	1	2/24/21		3/8" MEGA FLEX & BARB SWIVEL		15-42-3060		34.13	63235	4/05/21
1937915	1	3/10/21		PINS/PORTABLE SIGNS		11-11-3120		11.24	63235	4/05/21
1938584	1	3/11/21		HOSE CLAMPS		21-42-3060		31.60	63235	4/05/21
1938700	1	3/11/21		COTTER PINS		15-40-3060		37.40	63235	4/05/21
				FARM PLAN				176.81		
				205 FRONTIER AG						
878794	1	3/12/21	19171	DIESEL SEWER PLANT		23-41-3070		742.05	63236	4/05/21
				FRONTIER AG				742.05		
				171 GALL'S INC.						
17860973	1	3/11/21		DUTY BELT		11-03-4020		38.49	63237	4/05/21
				GALL'S INC.				38.49		
				218 GOODLAND POST OFFICE						
GEN21-154	1	3/20/21		FIRST CLASS PRESORT		15-44-3130		245.00	63238	4/05/21
GEN21-160	1	4/05/21		POST OFFICE BOX 59		11-02-3120		150.00	63238	4/05/21
				GOODLAND POST OFFICE				395.00		
				206 GOODLAND STAR-NEWS						
466900	1	2/02/21		VAN ADVERTISING		11-06-2130		42.90	63239	4/05/21
-----										

INVOICE NO	LN	DATE	PO NO	REFERENCE	TRACK		1099	NET	CHECK	PD DATE
					CD	GL ACCOUNT				
				GOODLAND STAR-NEWS				42.90		
				3100 GRAINGER						
9824761655	1	3/03/21	19503	400ML EPOXY GUN		15-42-3120		105.41	63240	4/05/21
9826153067	1	3/04/21	19282	BIRD REPELLENT SPIKES		15-40-3030		257.00	63240	4/05/21
9826153075	1	3/04/21	19282	BIRD REPELLENT SPIKES		15-40-3030		137.47	63240	4/05/21
9826532591	1	3/05/21	19283	HOUR METER #11		15-40-3060		18.73	63240	4/05/21
9834982234	1	3/12/21	19508	SAE HEXHEAD BIT SET		15-42-3020		132.44	63240	4/05/21
9834982234	2	3/12/21	19508	METRIC HEX HEAD BIT SET		15-42-3020		149.86	63240	4/05/21
9844057449	1	3/22/21	19476	MARKER LIGHTS #80		21-42-3170		54.28	63240	4/05/21
				GRAINGER				855.19		
				2109 GREAT PLAINS INSTITUTE						
3413	1	3/10/21		CHURCH-CLASS FOR POTABLE WTR		21-42-2170		170.00	63241	4/05/21
				GREAT PLAINS INSTITUTE				170.00		
				3610 GUYER, JONI R.						
GEN21-144	1	4/01/21		CEMETERY CARE/APRIL 2021		11-19-2140	M	3708.34	63242	4/05/21
				GUYER, JONI R.				3708.34		
				391 HOOVER LUMBER						
279940	1	3/01/21		REBAR 1/2"X20' GRADE 40		11-11-3120		80.60	63244	4/05/21
279996	1	3/02/21	18548	CLOTHES RACK SUPPLIES		11-17-3120		125.98	63244	4/05/21
280024	1	3/02/21		UPS CHARGES		21-40-3130		13.97	63244	4/05/21
280026	1	3/02/21		CONCRETE MIX 80 LB BAGX3		11-25-3030		13.65	63244	4/05/21
280084	1	3/03/21	35.08	GARDEN HOSE/SWTCH LGHT ALARM		11-11-3030		35.08	63244	4/05/21
280099	1	3/03/21	19378	CAULKING		11-25-3030		8.63	63244	4/05/21
280135	1	3/04/21		GRIND/CUTOFF WHEEL 4.5X1/8X7.8		21-42-3020		13.25	63244	4/05/21
280144	1	3/04/21		CONN SQUEEZE FLEX 1/2"		21-40-3060		.89	63244	4/05/21
280178	1	3/05/21	19379	LED LIGHTS-SWP OUTSIDE LIGHTS		11-25-3030		21.58	63244	4/05/21
280187	1	3/05/21	19551	4X8 PLYWOOD		11-17-3130		116.38	63244	4/05/21
280467	1	3/10/21		DRILL BIT 1/4"		21-42-3020		3.59	63244	4/05/21
280515	1	3/11/21		PVC PIPE 3X10		21-42-3060		10.79	63244	4/05/21
280562-TAX	1	3/12/21		BITSET/DRILL BITS/SCISSORS		15-42-3020		94.37	63244	4/05/21
280674	1	3/15/21	19386	PAINT SUPPLIES GULICK PARK		11-15-3030		19.57	63244	4/05/21
280676	1	3/15/21	19387	ROOF REPAIR MUSEUM		11-17-3030		73.01	63244	4/05/21
280760	1	3/16/21		SILICONE & CAULK GUN		11-03-3030		162.16	63244	4/05/21
280766	1	3/16/21		CAULK GUN/KNIFE BLADES/BUCKETS		11-11-3120		30.29	63244	4/05/21
280897	1	3/18/21		32 GALLON TRASH CAN BAGS		11-11-3030		17.09	63244	4/05/21
280955	1	3/19/21	19390	LIGHT BULBS GULICK PARK		11-15-3120		14.74	63244	4/05/21
281109	1	3/23/21	19558	PAINT, WOOD-PAPER/CHAIR RACKS		11-17-3120		75.28	63244	4/05/21
316615	1	3/03/21	19377	RED CAULKING X3 OUTSIDE WALLS		11-25-3030		29.97	63244	4/05/21
319213	1	3/22/21	19392	CAULKING OUTSIDE WALLS/SWP		11-25-3030		53.97	63244	4/05/21
				HOOVER LUMBER				1014.84		
				1733 IN THE CAN LLC						
GEN21-145	1	4/01/21		SOLID WASTE APRIL 2021		30-01-2220		38545.00	63245	4/05/21
				IN THE CAN LLC				38545.00		

INVOICE NO	LN	DATE	PO NO	REFERENCE	TRACK		1099	NET	CHECK	PD DATE
					CD	GL ACCOUNT				
-----										
2023 JCI INDUSTRIES INC										
8210004	1	3/12/21	19284	DISC PACK CODING TOWER FAN		15-40-3060		151.25	63246	4/05/21
								-----		
								151.25		
JCI INDUSTRIES INC										
663 JD FINANCIAL-ORSCHELN										
010142	1	3/11/21		2-19" PLANTERS		11-19-3120		79.98	63248	4/05/21
010151	1	3/11/21		19" PLANTER AND TOP SOIL		11-19-3120		44.57	63248	4/05/21
010443	1	3/13/21		DOG FOOD		11-03-3250		44.99	63248	4/05/21
010755	1	3/15/21		GLOVES		11-11-2310		23.48	63248	4/05/21
010828	1	3/16/21		RETURN TOP SOIL		11-19-3120		4.58-	63248	4/05/21
011253	1	3/19/21	19391	CRABGRASS PRELAWN FERTILIZER		11-02-3120		29.98	63248	4/05/21
011253	2	3/19/21	19391	CRABGRASS PRELAWN FERTILIZER		11-13-3120		14.99	63248	4/05/21
011253	3	3/19/21	19391	CRABGRASS PRELAWN FERTILIZER		11-17-3120		14.99	63248	4/05/21
011253	4	3/19/21	19391	CRABGRASS PRELAWN FERTILIZER		15-40-3120		14.99	63248	4/05/21
011253	5	3/19/21	19391	CRABGRASS PRELAWN FERTILIZER		11-25-3120		74.95	63248	4/05/21
018039	1	2/22/21		ROLLED RUBBER MAT 3/8" X 4		21-42-3050		39.96	63248	4/05/21
018052	1	2/22/21		RUBBER STALL MAT 4X6		21-42-3050		39.99	63248	4/05/21
018196	1	2/24/21	19168	WHEELBARROW DUAL WHEEL		23-43-3020		79.99	63248	4/05/21
018257	1	2/24/21	19374	8 FT LANDSCAPE TIMBERS		11-23-3030		399.50	63248	4/05/21
019057	1	3/03/21		WEED AND FEED		11-19-3120		53.97	63248	4/05/21
019117	1	3/03/21		WEED AND FEED		11-19-3120		35.98	63248	4/05/21
019733	1	3/08/21		30QT OIL, CHAIN LUBE, SHOP TWL		23-41-3120		22.73	63248	4/05/21
019856	1	3/09/21		STALL MAT 3X4 12MM		21-42-3050		19.99	63248	4/05/21
019858	1	3/09/21	19170	LOW VOLT WIRE 100FT		23-43-3050		49.99	63248	4/05/21
								-----		
								1080.44		
JD FINANCIAL-ORSCHELN										
2747 JOHNSON SERVICE COMPANY										
7554	1	3/17/21		SEWER CLEANING		23-43-4050		20000.00	63249	4/05/21
7554	2	3/17/21		SEWER CLEANING		23-43-4070		9781.45	63249	4/05/21
7555	1	3/15/21		CCTV LOOK FOR WATER LEAKS		21-42-2140		825.00	63249	4/05/21
								-----		
								30606.45		
JOHNSON SERVICE COMPANY										
1092 KANSAS CORP. COMM.										
GEN21-159	1	4/01/21		2011-00357		39-01-2050		100.36	63250	4/05/21
GEN21-159	2	4/01/21		2011-00571		39-01-2050		32.77	63250	4/05/21
								-----		
								133.13		
KANSAS CORP. COMM.										
1072 KANSAS PAYMENT CENTER										
PR20210312	1	3/12/21		INCOME WITHOLD		11-00-0012	N	497.08	3045279	3/19/21 E
PR20210312	2	3/12/21		INCOME WITHOLD		15-00-0012	N	392.31	3045279	3/19/21 E
PR20210326	1	3/26/21		INCOME WITHOLD		11-00-0012	N	497.08	3045288	4/02/21 E
PR20210326	2	3/26/21		INCOME WITHOLD		15-00-0012	N	392.31	3045288	4/02/21 E
								-----		
								1778.78		
KANSAS PAYMENT CENTER										
3392 KLING, JAKE D.										
GEN21-146	1	4/01/21		ATTORNEY FEES/APRIL 2021		11-02-2140	M	4000.00	63251	4/05/21
								-----		
								4000.00		
KLING, JAKE D.										



INVOICE NO	LN	DATE	PO NO	REFERENCE	TRACK		1099	NET	CHECK	PD DATE
					CD	GL ACCOUNT				
-----										
523 KS PUBLIC EMP. RETIREMENT										
PR20210312	1	3/12/21		KPERS		11-00-0012	N	2252.16	3045278	3/19/21 E
PR20210312	2	3/12/21		KPERS		15-00-0012	N	1870.07	3045278	3/19/21 E
PR20210312	3	3/12/21		KPERS		21-00-0012	N	333.07	3045278	3/19/21 E
PR20210312	4	3/12/21		KPERS		23-00-0012	N	273.26	3045278	3/19/21 E
PR20210312	5	3/12/21		KPERS II		11-00-0012	N	1470.58	3045278	3/19/21 E
PR20210312	6	3/12/21		KPERS II		15-00-0012	N	1159.28	3045278	3/19/21 E
PR20210312	7	3/12/21		KPERS II		21-00-0012	N	81.09	3045278	3/19/21 E
PR20210312	8	3/12/21		KPERS II		23-00-0012	N	81.09	3045278	3/19/21 E
PR20210312	9	3/12/21		KPERS III		11-00-0012	N	3480.53	3045278	3/19/21 E
PR20210312	10	3/12/21		KPERS III		15-00-0012	N	1257.98	3045278	3/19/21 E
PR20210312	11	3/12/21		KPERS III		21-00-0012	N	636.81	3045278	3/19/21 E
PR20210312	12	3/12/21		KPERS III		23-00-0012	N	190.34	3045278	3/19/21 E
PR20210312	13	3/12/21		KPERS D&D		11-00-0012	N	484.41	3045278	3/19/21 E
PR20210312	14	3/12/21		KPERS D&D		15-00-0012	N	288.35	3045278	3/19/21 E
PR20210312	15	3/12/21		KPERS D&D		21-00-0012	N	70.68	3045278	3/19/21 E
PR20210312	16	3/12/21		KPERS D&D		23-00-0012	N	36.63	3045278	3/19/21 E
PR20210326	1	3/26/21		KPERS		11-00-0012	N	2204.23	3045287	4/02/21 E
PR20210326	2	3/26/21		KPERS		15-00-0012	N	1805.34	3045287	4/02/21 E
PR20210326	3	3/26/21		KPERS		21-00-0012	N	409.59	3045287	4/02/21 E
PR20210326	4	3/26/21		KPERS		23-00-0012	N	273.26	3045287	4/02/21 E
PR20210326	5	3/26/21		OPTIONAL KPERS		11-00-0012	N	245.55	3045287	4/02/21 E
PR20210326	6	3/26/21		OPTIONAL KPERS		15-00-0012	N	38.25	3045287	4/02/21 E
PR20210326	7	3/26/21		KPERS II		11-00-0012	N	1493.12	3045287	4/02/21 E
PR20210326	8	3/26/21		KPERS II		15-00-0012	N	1134.00	3045287	4/02/21 E
PR20210326	9	3/26/21		KPERS II		21-00-0012	N	81.09	3045287	4/02/21 E
PR20210326	10	3/26/21		KPERS II		23-00-0012	N	81.09	3045287	4/02/21 E
PR20210326	11	3/26/21		KPERS III		11-00-0012	N	3210.57	3045287	4/02/21 E
PR20210326	12	3/26/21		KPERS III		15-00-0012	N	1470.80	3045287	4/02/21 E
PR20210326	13	3/26/21		KPERS III		21-00-0012	N	552.62	3045287	4/02/21 E
PR20210326	14	3/26/21		KPERS III		23-00-0012	N	190.34	3045287	4/02/21 E
PR20210326	15	3/26/21		KPERS D&D		11-00-0012	N	464.56	3045287	4/02/21 E
PR20210326	16	3/26/21		KPERS D&D		15-00-0012	N	296.59	3045287	4/02/21 E
PR20210326	17	3/26/21		KPERS D&D		21-00-0012	N	70.17	3045287	4/02/21 E
PR20210326	18	3/26/21		KPERS D&D		23-00-0012	N	36.63	3045287	4/02/21 E
								-----		
KS PUBLIC EMP. RETIREMENT								28024.13		
3284 M-FILES										
00031431	1	2/08/21		M-FILES SUBSCRIPTION		11-02-2140		1671.63	63252	4/05/21
00031431	2	2/08/21		M-FILES SUBSCRIPTION		15-44-2140		1393.03	63252	4/05/21
00031431	3	2/08/21		M-FILES SUBSCRIPTION		11-09-2140		278.60	63252	4/05/21
00031431	4	2/08/21		M-FILES SUBSCRIPTION		11-07-2140		278.60	63252	4/05/21
00031431	5	2/08/21		M-FILES SUBSCRIPTION		11-04-2140		278.60	63252	4/05/21
00031431	6	2/08/21		M-FILES SUBSCRIPTION		11-11-2140		835.81	63252	4/05/21
00031431	7	2/08/21		M-FILES SUBSCRIPTION		21-40-2140		278.60	63252	4/05/21
00031431	8	2/08/21		M-FILES SUBSCRIPTION		11-15-2140		278.60	63252	4/05/21
00031431	9	2/08/21		M-FILES SUBSCRIPTION		15-40-2140		278.60	63252	4/05/21
00031431	10	2/08/21		M-FILES SUBSCRIPTION		15-42-2140		278.60	63252	4/05/21
00031431	11	2/08/21		M-FILES SUBSCRIPTION		11-17-2140		1114.41	63252	4/05/21
00031431	12	2/08/21		M-FILES SUBSCRIPTION		11-25-2140		278.60	63252	4/05/21
								-----		
M-FILES								7243.68		

INVOICE NO	LN	DATE	PO NO	REFERENCE	TRACK		1099	NET	CHECK	PD DATE
					CD	GL ACCOUNT				
-----										
				3867 MATA, NELDA						
GEN21-147	1	3/17/21		OVERPAYMENT ON ACCT		15-44-3180		22.08	63253	4/05/21
				MATA, NELDA				22.08		
-----										
				1671 MEDART, INC.						
03566223	1	3/15/21	19388	GATOR MOWER BLADES		11-15-3120		99.51	63254	4/05/21
				MEDART, INC.				99.51		
-----										
				339 MILLER'S ELECTRONICS, INC						
224456	1	3/10/21	19380	GREEN PAINT PHILLIP/STEEVERPK		11-15-3030		36.50	63255	4/05/21
				MILLER'S ELECTRONICS, INC				36.50		
-----										
				3868 MWB TOOLS LLC						
3052115955	1	3/05/21		2-25FT TAPE MEASURES		11-11-3020		79.00	63256	4/05/21
				MWB TOOLS LLC				79.00		
-----										
				2104 NATIONWIDE TRUST CO. FSB						
PR20210312	1	3/12/21		NATIONWIDE TRST		11-00-0012	N	325.00	3045282	3/19/21 E
PR20210312	2	3/12/21		NATIONWIDE TRST		15-00-0012	N	265.00	3045282	3/19/21 E
PR20210326	1	3/26/21		NATIONWIDE TRST		11-00-0012	N	325.00	3045291	4/02/21 E
PR20210326	2	3/26/21		NATIONWIDE TRST		15-00-0012	N	265.00	3045291	4/02/21 E
				NATIONWIDE TRUST CO. FSB				1180.00		
-----										
				3646 ND CHILD SUPPORT DIVISION						
PR20210312	1	3/12/21		ND CHILD SUPPOR		15-00-0012	N	114.93	3045284	3/19/21 E
PR20210326	1	3/26/21		ND CHILD SUPPOR		15-00-0012	N	114.93	3045293	4/02/21 E
				ND CHILD SUPPORT DIVISION				229.86		
-----										
				3733 NEX-TECH COMMUNICATIONS						
DS-106909	1	2/25/21		ACCESS CONTROL DOORS		03-01-2140		4028.30	63257	4/05/21
				NEX-TECH COMMUNICATIONS				4028.30		
-----										
				3502 O'REILLY AUTO PARTS						
5617-181619	1	3/12/21		LED LIGHT PACKS		21-42-3060		114.58	63258	4/05/21
5617-181768	1	3/15/21		GLOW PLUGS UNIT 49		15-42-3060		40.72	63258	4/05/21
5617-181781	1	3/15/21		GLOW PLUGS UNIT 49		15-42-3060		40.72	63258	4/05/21
5617-181840	1	3/16/21		ANTIFREEZE RESERVOIR		15-42-3060		79.25	63258	4/05/21
5617-181859	1	3/16/21		CREDIT ANTIFREEZE		15-42-3060		5.00-	63258	4/05/21
5617-182023	1	3/19/21		LED LIGHT PACKS CREDIT		21-42-3060		114.58-	63258	4/05/21
5617-182025	1	3/19/21		LIGHTBAR, WIRE UNIT 80		21-42-3060		69.14	63258	4/05/21
5617-182332	1	3/23/21		CREDIT		21-42-3060		31.51-	63258	4/05/21
				O'REILLY AUTO PARTS				193.32		
-----										
				3003 OVERHEAD DOOR CO. OF NW K						
D14335A	1	3/18/21	19504	3-RSX TROLLEYS W 14" TRACK		15-42-3060		4641.90	63259	4/05/21
-----										

INVOICE NO	LN	DATE	PO NO	REFERENCE	TRACK		1099	NET	CHECK	PD DATE
					CD	GL ACCOUNT				
				OVERHEAD DOOR CO. OF NW K				4641.90		
				30 P I C						
2236	1	3/13/21		CONSULTING FEE/APRIL		11-02-2140		166.68	63261	4/05/21
2236	2	3/13/21		CONSULTING FEE/APRIL		11-03-2140		250.02	63261	4/05/21
2236	3	3/13/21		CONSULTING FEE/APRIL		11-04-2140		27.78	63261	4/05/21
2236	4	3/13/21		CONSULTING FEE/APRIL		11-07-2140		27.78	63261	4/05/21
2236	5	3/13/21		CONSULTING FEE/APRIL		11-09-2140		27.78	63261	4/05/21
2236	6	3/13/21		CONSULTING FEE/APRIL		11-11-2140		250.02	63261	4/05/21
2236	7	3/13/21		CONSULTING FEE/APRIL		11-15-3120		55.56	63261	4/05/21
2236	8	3/13/21		CONSULTING FEE/APRIL		11-17-2140		27.78	63261	4/05/21
2236	9	3/13/21		CONSULTING FEE/APRIL		21-40-2140		27.78	63261	4/05/21
2236	10	3/13/21		CONSULTING FEE/APRIL		21-42-2140		83.34	63261	4/05/21
2236	11	3/13/21		CONSULTING FEE/APRIL		23-41-2140		27.78	63261	4/05/21
2236	12	3/13/21		CONSULTING FEE/APRIL		23-43-2140		27.78	63261	4/05/21
2236	13	3/13/21		CONSULTING FEE/APRIL		15-40-2140		194.46	63261	4/05/21
2236	14	3/13/21		CONSULTING FEE/APRIL		15-42-2140		194.46	63261	4/05/21
2236	15	3/13/21		CONSULTING FEE/APRIL		15-44-2140		111.00	63261	4/05/21
				P I C				1500.00		
				1903 PACE ANALYTICAL						
2160127491	1	3/15/21		ANALYSIS SOUTH 10" MAIN		21-40-2070		85.00	63262	4/05/21
				PACE ANALYTICAL				85.00		
				2401 PAW WASH						
GEN21-148	1	4/01/21		ANIMAL CONTROL CONTRACT		11-05-2140		2250.00	63263	4/05/21
GEN21-149	1	11/24/20		BLADE BOARD/UTILITIES		11-00-0006		2180.00	63263	4/05/21
				PAW WASH				4430.00		
				3759 PRAIRIESPRINGS HOSPITALIT						
GEN21-150	1	4/01/21		REIMB SALES TAX		28-01-2050		3418.47	63264	4/05/21
				PRAIRIESPRINGS HOSPITALIT				3418.47		
				3671 PRIMROSE OIL COMPANY INC						
88269	1	3/08/21	19285	MICROBICIDE/GREASE		15-40-3060		878.18	63265	4/05/21
				PRIMROSE OIL COMPANY INC				878.18		
				1683 PRINCIPAL MUTUAL LIFE INS						
PR20210312	1	3/12/21		PRIN. MUTUAL		11-00-0012	N	137.90	63218	3/19/21
PR20210312	2	3/12/21		PRIN. MUTUAL		15-00-0012	N	241.80	63218	3/19/21
				PRINCIPAL MUTUAL LIFE INS				379.70		
				3462 REPUBLICAN VALLEY VETERIN						
196419	1	3/25/21		GOOSE VACCINES		11-03-3250		109.48	63266	4/05/21
				REPUBLICAN VALLEY VETERIN				109.48		
				3829 ROBERTS CONSTRUCTION						

INVOICE NO	LN	DATE	PO NO	REFERENCE	TRACK		1099	NET	CHECK	PD DATE
					CD	GL ACCOUNT				
-----										
3829 ROBERTS CONSTRUCTION										
GEN21-156	1	3/11/21	19554	FINAL PYMT FRONT ENTRY		03-00-0006	M	2510.00	63267	4/05/21
								-----		
								2510.00		
ROBERTS CONSTRUCTION										
1682 S & B MOTELS										
GEN21-151	1	4/01/21		REIMB SALES TAX		28-01-2040		3640.73	63268	4/05/21
								-----		
								3640.73		
S & B MOTELS										
1442 S & T COMMUNICATIONS, INC										
10521930	1	4/01/21		ALARMS		15-44-2180		38.25	63269	4/05/21
10521930	2	4/01/21		ALARMS		21-40-2180		11.05	63269	4/05/21
10521930	3	4/01/21		ALARM		23-41-2180		12.75	63269	4/05/21
10521930	4	4/01/21		ALARM		11-17-2180		12.75	63269	4/05/21
10521930	5	4/01/21		INTERNET		23-41-2180		29.95	63269	4/05/21
10521930	6	4/01/21		INTERNET		21-40-2180		39.95	63269	4/05/21
10521930	7	4/01/21		INTERNET		21-40-2180		9.95	63269	4/05/21
								-----		
								154.65		
S & T COMMUNICATIONS, INC										
407 SALINA SUPPLY COMPANY										
S100190112.001	1	3/01/21		10" COUPLINGS		21-42-3050		522.39	63270	4/05/21
								-----		
								522.39		
SALINA SUPPLY COMPANY										
2265 SCHERMERHORN, KATHY										
GEN21-151	1	4/01/21		ANIMAL CONTROL/APRIL 2021		11-05-2140	M	1500.00	63271	4/05/21
								-----		
								1500.00		
SCHERMERHORN, KATHY										
413 SCHLOSSER, INC.										
7604	1	3/11/21		5TH & CENTER CONCRETE		21-42-3050		127.50	63272	4/05/21
7622	1	3/25/21		12TH/ARCADE CONCRETE		11-11-3120		894.00	63272	4/05/21
7627	1	3/26/21		CONCRETE 12TH & ARCADE		11-11-3120		745.00	63272	4/05/21
								-----		
								1766.50		
SCHLOSSER, INC.										
1577 SH COUNTY COMMUNITY FOUND										
GEN21-157	1	3/29/21		REIMBURSE OVERPAYMENT OF GRANT		38-01-4010		431.70	63273	4/05/21
								-----		
								431.70		
SH COUNTY COMMUNITY FOUND										
425 SHERMAN COUNTY TREASURER										
0A74A32	1	4/01/21		379DKG/13 DODGE		15-40-3120		267.49	63275	4/05/21
0A74A32	2	4/01/21		FACILITY FEE		15-40-3120		2.50	63275	4/05/21
0C80340	1	4/01/21		655CKG/08 FORD		21-40-3120		101.29	63275	4/05/21
0C80340	2	4/01/21		FACILITY FEE		21-40-3120		2.50	63275	4/05/21
1E54C4A	1	4/01/21		656CKG/07 GMC		15-40-3120		93.94	63275	4/05/21
1E54C4A	2	4/01/21		FACILITY FEE		15-40-3120		2.50	63275	4/05/21
2D2BC5F	1	4/01/21		366MJA/19 FORD		15-40-3120		530.41	63275	4/05/21
2D2BC5F	2	4/01/21		FACILITY FEE		15-40-3120		2.50	63275	4/05/21
374B753	1	4/01/21		653CKG/04 FORD		11-11-3120		83.24	63275	4/05/21
374B753	2	4/01/21		FACILITY FEE		11-11-3120		2.50	63275	4/05/21

INVOICE NO	LN	DATE	PO NO	REFERENCE	TRACK		1099	NET	CHECK	PD DATE
					CD	GL ACCOUNT				
-----										
425 SHERMAN COUNTY TREASURER										
575B429	1	4/01/21		635HEC/14 FORD		15-40-3120		223.35	63275	4/05/21
575B429	2	4/01/21		FACILITY FEE		15-40-3120		2.50	63275	4/05/21
98E6149	1	4/01/21		654CKG/05 FORD		11-11-3120		85.54	63275	4/05/21
98E6149	2	4/01/21		FACILITY FEE		11-11-3120		2.50	63275	4/05/21
9AA0E53	1	4/01/21		659CKG/12 FORD		15-40-3120		195.65	63275	4/05/21
9AA0E53	2	4/01/21		FACILITY FEE		15-40-3120		2.50	63275	4/05/21
EC6F318	1	4/01/21		660CKG/02 GMC		21-40-3120		76.25	63275	4/05/21
EC6F318	2	4/01/21		FACILITY FEE		21-40-3120		2.50	63275	4/05/21
F9E8F5A	1	4/01/21		360MTC/20 FORD		15-40-3120		505.91	63275	4/05/21
F9E8F5A	2	4/01/21		FACILITY FEE		15-40-3120		2.50	63275	4/05/21
								-----		
SHERMAN COUNTY TREASURER								2188.07		
427 SHORES NAPA										
197398	1	2/26/21	19375	DUST MASKS/TOWELS/BATTERIES		11-15-3120		68.43	63280	4/05/21
197461	1	2/26/21	19467	TEST LEAD/BUTT CONNECT/CLIPS		11-07-3120		25.18	63280	4/05/21
197612	1	3/01/21		HAMMERDRILLS		11-11-3020		55.71	63280	4/05/21
197632	1	3/01/21		BLACK/GRAY PAINT		15-42-3120		26.55	63280	4/05/21
197638	1	3/01/21		PRIMARY WIRE/CONNECTOR		11-11-3170		24.54	63280	4/05/21
197669	1	3/01/21		AIR CLEANER ELEMENT		11-11-3060		15.88	63280	4/05/21
197758	1	3/02/21		LIGHT BULBS		11-07-3120		7.30	63280	4/05/21
197946	1	3/03/21		BIG SHOT X2		11-11-3020		19.98	63280	4/05/21
197955	1	3/03/21	19468	FUSE HOLDER/FLAT PLUG/BATTERY		11-07-3120		16.99	63280	4/05/21
198027	1	3/04/21		TOOLS/PLIERS, PEG HOLDERS		15-40-3020		244.97	63280	4/05/21
198028	1	3/04/21		BIT 9/16" THUNDERBOLT		15-42-3020		28.62	63280	4/05/21
198047	1	3/04/21		PVC CAP		15-42-3120		8.68	63280	4/05/21
198048	1	3/04/21		PVC CAP		15-42-3120		2.17	63280	4/05/21
198142	1	3/05/21	19469	OIL/AIR FILTER UNIT #18		11-11-3170		13.17	63280	4/05/21
198143	1	3/05/21		OIL/AIR/FUEL FILTERS UNIT#5		21-42-3060		19.83	63280	4/05/21
198156	1	3/05/21	19381	PIPECAPS/GALLONPIPE CLOTES RAC		11-17-3120		78.58	63280	4/05/21
198180	1	3/05/21		STRIPE OFF WHEEL KIT		11-11-3020		39.09	63280	4/05/21
198242	1	3/05/21		CLEANING BRUSH		11-11-3020		7.59	63280	4/05/21
198410	1	3/08/21		LINK COUPLER		11-15-3120		1.69	63280	4/05/21
198427	1	3/08/21	19470	AIR/OIL/FUEL/HYD FILTERS #16		11-11-3060		79.87	63280	4/05/21
198473	1	3/08/21		TORCH REGULATOR		11-07-3060		89.99	63280	4/05/21
198548	1	3/09/21	19383	GRAFFITI REMOVER		11-15-3120		11.99	63280	4/05/21
198549	1	3/09/21		BRAKE CLNR PUTTY KNIFE SAND PD		15-40-3060		60.45	63280	4/05/21
198564	1	3/09/21		BUCKET		11-11-3120		9.58	63280	4/05/21
198606	1	3/09/21	19471	HANDLE		11-11-3020		7.99	63280	4/05/21
198653	1	3/09/21		WYPALL L40 X 2		15-40-3060		185.28	63280	4/05/21
198747	1	3/10/21		MATS, 7"COTTER PIN,SHEETING		15-40-3120		81.48	63280	4/05/21
198754	1	3/10/21	19472	SPRING NUT/TRIM SCREW PD#2		11-03-3170		7.97	63280	4/05/21
198785	1	3/10/21		V-BELT #16 STREET		11-11-3060		13.25	63280	4/05/21
198819	1	3/10/21	19473	SHOCK/BRAKE PADS/ROTOR #5		21-42-3170		222.94	63280	4/05/21
198835	1	3/10/21	19384	TRAILER TAIL LIGHT		11-15-3060		10.62	63280	4/05/21
198835	2	3/10/21	19384	GOO GONE CLEANER		11-15-3120		8.69	63280	4/05/21
198870	1	3/11/21		FILE SET/HANDLE, GASKET SCRAPE		15-40-3060		37.47	63280	4/05/21
198886	1	3/11/21	19385	BATHROOM DOOR PAINT SUPPLIES		11-15-3030		8.81	63280	4/05/21
198940	1	3/11/21		CAUTION TAPE		11-11-3120		17.38	63280	4/05/21
198980	1	3/12/21	19475	AIR FILTER/GENERATOR CITY OFF		11-11-3060		39.42	63280	4/05/21
198986	1	3/12/21	19473	ROTOR #5		21-42-3170		100.18	63280	4/05/21
198997	1	3/12/21	19473	BRAKE PADS UNIT #5		21-42-3170		39.77	63280	4/05/21
198998	1	3/12/21		DRILL BITS, VISE GRIP		15-42-3020		269.48	63280	4/05/21

INVOICE NO	LN	DATE	PO NO	REFERENCE	TRACK		1099	NET	CHECK	PD DATE
					CD	GL ACCOUNT				
-----										
427 SHORES NAPA										
199334	1	3/16/21		GLOVES		15-42-2310		24.55	63280	4/05/21
199383	1	3/16/21		GLOW PLUG HARNESS		15-42-3060		72.22	63280	4/05/21
199462	1	3/17/21		2" DRIV UNIV JOINT		11-11-3060		9.99	63280	4/05/21
199542	1	3/17/21		SHOP TOWELS, BRK CLNR		21-42-3120		71.75	63280	4/05/21
199611	1	3/18/21		AIR FILTERS, FUEL FILTER		21-42-3060		45.04	63280	4/05/21
199630	1	3/18/21		SILICONE		11-03-3030		64.68	63280	4/05/21
199652	1	3/18/21		BROOM		11-11-3030		25.98	63280	4/05/21
199703	1	3/18/21		WIRE BRUSH X 3		15-42-3120		22.42	63280	4/05/21
199706	1	3/18/21		LEXEL X 12		15-40-3030		117.59	63280	4/05/21
199781	1	3/19/21		SILICONE X 6		11-03-3030		32.34	63280	4/05/21
199845	1	3/20/21		LED ASSEMBLY #80 WATER		21-42-3060		53.54	63280	4/05/21
199954	1	3/22/21		POLISH BONNET		15-42-3120		7.07	63280	4/05/21
199962	1	3/22/21		HAMMERDRILL BITS		15-42-3020		49.68	63280	4/05/21
199968	1	3/22/21		CONCRETE GRINDER		11-11-3120		69.99	63280	4/05/21
200117	1	3/23/21	19557	PIECES FOR PAPER RACK		11-17-3120		13.78	63280	4/05/21
200176	1	3/24/21		LED ASSEMBLY #80		21-42-3060		53.54	63280	4/05/21
200232	1	3/24/21		REDUCER/COUPLER		21-42-3050		13.98	63280	4/05/21
200276	1	3/24/21		METAL		15-42-3120		12.97	63280	4/05/21
200304	1	3/24/21		BRAKE CLNR, PASE, BLASTER		15-40-3120		66.70	63280	4/05/21
200338	1	3/25/21	19477	ACTUATOR PD#6		11-03-3170		104.81	63280	4/05/21
200350	1	3/25/21		MERCON V ATF X 12		15-42-3060		57.29	63280	4/05/21
200365	1	3/25/21	19393	PLUG INS, HEATERS		11-23-3060		61.67	63280	4/05/21
200365	2	3/25/21	19393	LOCKS FOR FRISBEE GOLF		26-01-4010		29.99	63280	4/05/21
								-----		
SHORES NAPA								3089.13		
432 SMITH AND LOVELESS, INC.										
151093	1	3/03/21	19167	CYL LOCK, STRIKER, KEY, WASHER		23-43-3060		271.44	63281	4/05/21
								-----		
SMITH AND LOVELESS, INC.								271.44		
3714 TORCUP INC										
398388	1	3/11/21	19286	TX SWIVEL 1/8" X 1/4"M		15-40-3060		149.72	63282	4/05/21
								-----		
TORCUP INC								149.72		
2159 TRIPLETT INC										
GEN21-152	1	4/01/21		SALES TAX REIMB		28-01-2060		1490.89	63283	4/05/21
								-----		
TRIPLETT INC								1490.89		
1565 ULINE										
131160461	1	3/10/21	19382	TOILET PAPER/PAPER TWLS/GLVES		11-15-3120		262.37	63284	4/05/21
131160461	2	3/10/21	19382	TOILET PAPER/PAPER TOWELS		11-23-3110		136.00	63284	4/05/21
								-----		
ULINE								398.37		
2784 USD # 352										
GEN21-153	1	4/01/21		SCHOOL TAX/MARCH 2021		11-02-2050		27312.10	63285	4/05/21
								-----		
USD # 352								27312.10		

INVOICE NO	LN	DATE	PO NO	REFERENCE	TRACK		1099	NET	CHECK	PD DATE
					CD	GL ACCOUNT				
-----										
				2895 VISION CARE DIRECT ADM.						
PR20210312	1	3/12/21		VISION CARE DIR		11-00-0012	N	127.30	63219	3/19/21
PR20210312	2	3/12/21		VISION CARE DIR		15-00-0012	N	120.24	63219	3/19/21
PR20210312	3	3/12/21		VISION CARE DIR		21-00-0012	N	26.74	63219	3/19/21
PR20210312	4	3/12/21		VISION CARE DIR		23-00-0012	N	9.78	63219	3/19/21
PR20210326	1	3/26/21		VISION CARE DIR		11-00-0012	N	127.30	63222	4/02/21
PR20210326	2	3/26/21		VISION CARE DIR		15-00-0012	N	120.24	63222	4/02/21
PR20210326	3	3/26/21		VISION CARE DIR		21-00-0012	N	26.74	63222	4/02/21
PR20210326	4	3/26/21		VISION CARE DIR		23-00-0012	N	9.78	63222	4/02/21
				VISION CARE DIRECT ADM.				568.12		
-----										
				3537 VLS COMMUNICATIONS INC						
2252	1	3/09/21		BATTERIES LIION IP68 X 8		11-07-3020		904.16	63286	4/05/21
				VLS COMMUNICATIONS INC				904.16		
-----										
				3869 WAGGONERS, INC						
GEN21-155	1	3/25/21		DEPOSIT PEW CUSHIONS		05-01-4050		410.00	63287	4/05/21
				WAGGONERS, INC				410.00		
-----										
				640 WAL*MART						
01182	1	3/15/21		PETROLEUM		15-40-3120		2.15	63288	4/05/21
01384	1	2/22/21		PAPER TWL,CUPS,CLN SUPPLY,TP		15-40-3120		164.93	63288	4/05/21
01792	1	2/25/21		PLANNERS		21-42-3120		22.88	63288	4/05/21
03102	1	3/05/21	19552	CLEANING SUPPLIES/NOTES		11-17-3120		67.87	63288	4/05/21
03968	1	3/11/21		KLEENEX, PAPER TWL, COFFEE		15-40-3120		125.04	63288	4/05/21
04465	1	3/15/21		PAPER TWLS, CLEANING SUPPLIES		15-42-3120		95.45	63288	4/05/21
06981	1	2/23/21		CLEAN WIPES		11-03-3120		11.94	63288	4/05/21
08778	1	2/18/21	18543	MUSLIN & BATTING		11-17-3120		95.69	63288	4/05/21
				WAL*MART				585.95		
-----										
				1854 WEIS FIRE & SAFETY						
183872	1	3/11/21		QUADRAFOG NOZZLE, BOOSTER HOSE		11-07-3060		863.74	63289	4/05/21
				WEIS FIRE & SAFETY				863.74		
-----										
				***** REPORT TOTAL *****				237177.00		

JRNL ID/ ACCOUNT NUMBER	OTHER NUMBER/ ACCOUNT TITLE	OTHER REFERENCE/ REFERENCE	DEBIT	CREDIT	BANK #
PAYROLL					
11-00-0011	GENERAL EMP TAX A/P	SS/MED EMPE GEN	4,295.80		
11-00-0001	GENERAL OPERATING CASH	SS/MED EMPE GEN		4,295.80	1
15-00-0011	ELECTRIC EMP TAX A/P	SS/MED EMPE ELE	2,153.23		
15-00-0001	ELECTRIC CASH	SS/MED EMPE ELE		2,153.23	1
21-00-0011	WATER EMP TAX A/P	SS/MED EMPE WAT	516.96		
21-00-0001	WATER CASH	SS/MED EMPE WAT		516.96	1
23-00-0011	SEWER EMP TAX A/P	SS/MED EMPE SEW	276.46		
23-00-0001	SEWER CASH	SS/MED EMPE SEW		276.46	1
11-00-0011	GENERAL EMP TAX A/P	SS/MED EMPE GEN	4,295.80		
11-00-0001	GENERAL OPERATING CASH	SS/MED EMPE GEN		4,295.80	1
15-00-0011	ELECTRIC EMP TAX A/P	SS/MED EMPE ELE	2,153.23		
15-00-0001	ELECTRIC CASH	SS/MED EMPE ELE		2,153.23	1
21-00-0011	WATER EMP TAX A/P	SS/MED EMPE WAT	516.96		
21-00-0001	WATER CASH	SS/MED EMPE WAT		516.96	1
23-00-0011	SEWER EMP TAX A/P	SS/MED EMPE SEW	276.46		
23-00-0001	SEWER CASH	SS/MED EMPE SEW		276.46	1
11-00-0011	GENERAL EMP TAX A/P	FED TAX GEN	4,514.87		
11-00-0001	GENERAL OPERATING CASH	FED TAX GEN		4,514.87	1
15-00-0011	ELECTRIC EMP TAX A/P	FED TAX ELE	1,949.15		
15-00-0001	ELECTRIC CASH	FED TAX ELE		1,949.15	1
21-00-0011	WATER EMP TAX A/P	FED TAX WAT	375.10		
21-00-0001	WATER CASH	FED TAX WAT		375.10	1
23-00-0011	SEWER EMP TAX A/P	FED TAX SEW	232.34		
23-00-0001	SEWER CASH	FED TAX SEW		232.34	1
11-00-0011	GENERAL EMP TAX A/P	STATE TAX GEN	2,174.51		
11-00-0001	GENERAL OPERATING CASH	STATE TAX GEN		2,174.51	1
15-00-0011	ELECTRIC EMP TAX A/P	STATE TAX ELE	1,114.75		
15-00-0001	ELECTRIC CASH	STATE TAX ELE		1,114.75	1
21-00-0011	WATER EMP TAX A/P	STATE TAX WAT	232.01		
21-00-0001	WATER CASH	STATE TAX WAT		232.01	1
23-00-0011	SEWER EMP TAX A/P	STATE TAX SEW	132.70		
23-00-0001	SEWER CASH	STATE TAX SEW		132.70	1
07-01-5030	SELF INSUR BCBS STOP LOSS PYMT	STOP LOSS 03/16	13,539.79		
07-00-0001	SELF INSUR CASH	STOP LOSS 03/16		13,539.79	1
15-40-1050	ELEC. PROD. INSURANCE	UNEMP ELPR	65.82		
15-00-0001	ELECTRIC CASH	UNEMP ELPR		65.82	1
15-42-1050	ELEC. DIST. INSURANCE	UNEMP ELDI	66.55		
15-00-0001	ELECTRIC CASH	UNEMP ELDI		66.55	1
15-44-1050	ELEC. COMM & GEN INSURANCE	UNEMP ELCG	33.90		
15-00-0001	ELECTRIC CASH	UNEMP ELCG		33.90	1
21-40-1050	WATER PROD. INSURANCE	UNEMP WAPR	19.47		
21-00-0001	WATER CASH	UNEMP WAPR		19.47	1
21-42-1050	WATER DIST. INSURANCE	UNEMP WADI	26.64		
21-00-0001	WATER CASH	UNEMP WADI		26.64	1
23-41-1050	SEWER TREATMENT INSURANCE	UNEMP SETR	10.77		
23-00-0001	SEWER CASH	UNEMP SETR		10.77	1
23-43-1050	SEWER COLL. INSURANCE	UNEMP SECO	10.95		
23-00-0001	SEWER CASH	UNEMP SECO		10.95	1
45-01-5040	EMP BENEFIT REMIT TO UNEMP INS	UNEMP GEN	315.52		
45-00-0001	EMP BENEFITS CASH	UNEMP GEN		315.52	1



JRNL ID/ ACCOUNT NUMBER	OTHER NUMBER/ ACCOUNT TITLE	OTHER REFERENCE/ REFERENCE	DEBIT	CREDIT	BANK #
		Journal Total :	39,299.74	39,299.74	
		Sub Total	39,299.74	39,299.74	
		** Report Total **	39,299.74	39,299.74	

FUND	NAME	DEBITS	CREDITS
07	SELF INSURANCE	13,539.79	13,539.79
11	GENERAL	15,280.98	15,280.98
15	ELECTRIC UTILITY	7,536.63	7,536.63
21	WATER UTILITY	1,687.14	1,687.14
23	SEWER UTILITY	939.68	939.68
45	EMPLOYEE BENEFIT	315.52	315.52
TOTALS		39,299.74	39,299.74

\*\* Transactions affected cash may need to be entered in Bank Rec! \*\*  
 \*\* Review transactions that have a number in the Bank # column. \*\*

ACCOUNT NUMBER	ACCOUNT TITLE	DEBITS	CREDITS	NET
07-00-0001	SELF INSUR CASH	.00	13,539.79	13,539.79-
07-01-5030	SELF INSUR BCBS STOP LOSS PYMT	13,539.79	.00	13,539.79
11-00-0001	GENERAL OPERATING CASH	.00	15,280.98	15,280.98-
11-00-0011	GENERAL EMP TAX A/P	15,280.98	.00	15,280.98
15-00-0001	ELECTRIC CASH	.00	7,536.63	7,536.63-
15-00-0011	ELECTRIC EMP TAX A/P	7,370.36	.00	7,370.36
15-40-1050	ELEC. PROD. INSURANCE	65.82	.00	65.82
15-42-1050	ELEC. DIST. INSURANCE	66.55	.00	66.55
15-44-1050	ELEC. COMM & GEN INSURANCE	33.90	.00	33.90
21-00-0001	WATER CASH	.00	1,687.14	1,687.14-
21-00-0011	WATER EMP TAX A/P	1,641.03	.00	1,641.03
21-40-1050	WATER PROD. INSURANCE	19.47	.00	19.47
21-42-1050	WATER DIST. INSURANCE	26.64	.00	26.64
23-00-0001	SEWER CASH	.00	939.68	939.68-
23-00-0011	SEWER EMP TAX A/P	917.96	.00	917.96
23-41-1050	SEWER TREATMENT INSURANCE	10.77	.00	10.77
23-43-1050	SEWER COLL. INSURANCE	10.95	.00	10.95
45-00-0001	EMP BENEFITS CASH	.00	315.52	315.52-
45-01-5040	EMP BENEFIT REMIT TO UNEMP INS	315.52	.00	315.52
TRANSACTION TOTALS		39,299.74	39,299.74	.00

JRNL ID/ ACCOUNT NUMBER	OTHER NUMBER/ ACCOUNT TITLE	OTHER REFERENCE/ REFERENCE	DEBIT	CREDIT	BANK #
PAYROLL					
11-00-0011	GENERAL EMP TAX A/P	SS/MED EMPE GEN	3,601.86		
11-00-0001	GENERAL OPERATING CASH	SS/MED EMPE GEN		3,601.86	1
15-00-0011	ELECTRIC EMP TAX A/P	SS/MED EMPE ELE	2,218.02		
15-00-0001	ELECTRIC CASH	SS/MED EMPE ELE		2,218.02	1
21-00-0011	WATER EMP TAX A/P	SS/MED EMPE WAT	511.38		
21-00-0001	WATER CASH	SS/MED EMPE WAT		511.38	1
23-00-0011	SEWER EMP TAX A/P	SS/MED EMPE SEW	276.46		
23-00-0001	SEWER CASH	SS/MED EMPE SEW		276.46	1
11-00-0011	GENERAL EMP TAX A/P	SS/MED EMPE GEN	3,601.86		
11-00-0001	GENERAL OPERATING CASH	SS/MED EMPE GEN		3,601.86	1
15-00-0011	ELECTRIC EMP TAX A/P	SS/MED EMPE ELE	2,218.02		
15-00-0001	ELECTRIC CASH	SS/MED EMPE ELE		2,218.02	1
21-00-0011	WATER EMP TAX A/P	SS/MED EMPE WAT	511.38		
21-00-0001	WATER CASH	SS/MED EMPE WAT		511.38	1
23-00-0011	SEWER EMP TAX A/P	SS/MED EMPE SEW	276.46		
23-00-0001	SEWER CASH	SS/MED EMPE SEW		276.46	1
11-00-0011	GENERAL EMP TAX A/P	FED TAX GEN	3,592.47		
11-00-0001	GENERAL OPERATING CASH	FED TAX GEN		3,592.47	1
15-00-0011	ELECTRIC EMP TAX A/P	FED TAX ELE	1,995.72		
15-00-0001	ELECTRIC CASH	FED TAX ELE		1,995.72	1
21-00-0011	WATER EMP TAX A/P	FED TAX WAT	369.91		
21-00-0001	WATER CASH	FED TAX WAT		369.91	1
23-00-0011	SEWER EMP TAX A/P	FED TAX SEW	232.34		
23-00-0001	SEWER CASH	FED TAX SEW		232.34	1
11-00-0011	GENERAL EMP TAX A/P	STATE TAX GEN	1,884.52		
11-00-0001	GENERAL OPERATING CASH	STATE TAX GEN		1,884.52	1
15-00-0011	ELECTRIC EMP TAX A/P	STATE TAX ELE	1,142.32		
15-00-0001	ELECTRIC CASH	STATE TAX ELE		1,142.32	1
21-00-0011	WATER EMP TAX A/P	STATE TAX WAT	234.90		
21-00-0001	WATER CASH	STATE TAX WAT		234.90	1
23-00-0011	SEWER EMP TAX A/P	STATE TAX SEW	132.70		
23-00-0001	SEWER CASH	STATE TAX SEW		132.70	1
07-01-5030	SELF INSUR BCBS STOP LOSS PYMT	STOP LOSS 03/23	13,489.65		
07-00-0001	SELF INSUR CASH	STOP LOSS 03/23		13,489.65	1
07-01-5030	SELF INSUR BCBS STOP LOSS PYMT	STOP LOSS 03/30	6,460.74		
07-00-0001	SELF INSUR CASH	STOP LOSS 03/30		6,460.74	1
15-40-1050	ELEC. PROD. INSURANCE	BCBS ELPR	3,483.30		
15-00-0001	ELECTRIC CASH	BCBS ELPR		3,483.30	1
15-42-1050	ELEC. DIST. INSURANCE	BCBS ELDI	4,624.08		
15-00-0001	ELECTRIC CASH	BCBS ELDI		4,624.08	1
15-44-1050	ELEC. COMM & GEN INSURANCE	BCBS ELCG	2,933.31		
15-00-0001	ELECTRIC CASH	BCBS ELCG		2,933.31	1
21-40-1050	WATER PROD. INSURANCE	BCBS WAPR	641.80		
21-00-0001	WATER CASH	BCBS WAPR		641.80	1
21-42-1050	WATER DIST. INSURANCE	BCBS WADI	1,426.98		
21-00-0001	WATER CASH	BCBS WADI		1,426.98	1
23-41-1050	SEWER TREATMENT INSURANCE	BCBS SETR	440.08		
23-00-0001	SEWER CASH	BCBS SETR		440.08	1
23-43-1050	SEWER COLL. INSURANCE	BCBS SECO	690.19		
23-00-0001	SEWER CASH	BCBS SECO		690.19	1
45-01-1050	EMP BENEFIT HEALTH/ACC INSUR	BCBS GF	13,116.50		

JRNL ID/ ACCOUNT NUMBER	OTHER NUMBER/ ACCOUNT TITLE	OTHER REFERENCE/ REFERENCE	DEBIT	CREDIT	BANK #
45-00-0001	EMP BENEFITS CASH	BCBS GF		13,116.50	1

Journal Total :	70,106.95	70,106.95
-----------------	-----------	-----------

Sub Total	70,106.95	70,106.95
-----------	-----------	-----------

** Report Total **	70,106.95	70,106.95
--------------------	-----------	-----------

FUND	NAME	DEBITS	CREDITS
07	SELF INSURANCE	19,950.39	19,950.39
11	GENERAL	12,680.71	12,680.71
15	ELECTRIC UTILITY	18,614.77	18,614.77
21	WATER UTILITY	3,696.35	3,696.35
23	SEWER UTILITY	2,048.23	2,048.23
45	EMPLOYEE BENEFIT	13,116.50	13,116.50
TOTALS		70,106.95	70,106.95

\*\* Transactions affected cash may need to be entered in Bank Rec!    \*\*  
 \*\* Review transactions that have a number in the Bank # column.    \*\*

ACCOUNT NUMBER	ACCOUNT TITLE	DEBITS	CREDITS	NET
07-00-0001	SELF INSUR CASH	.00	19,950.39	19,950.39-
07-01-5030	SELF INSUR BCBS STOP LOSS PYMT	19,950.39	.00	19,950.39
11-00-0001	GENERAL OPERATING CASH	.00	12,680.71	12,680.71-
11-00-0011	GENERAL EMP TAX A/P	12,680.71	.00	12,680.71
15-00-0001	ELECTRIC CASH	.00	18,614.77	18,614.77-
15-00-0011	ELECTRIC EMP TAX A/P	7,574.08	.00	7,574.08
15-40-1050	ELEC. PROD. INSURANCE	3,483.30	.00	3,483.30
15-42-1050	ELEC. DIST. INSURANCE	4,624.08	.00	4,624.08
15-44-1050	ELEC. COMM & GEN INSURANCE	2,933.31	.00	2,933.31
21-00-0001	WATER CASH	.00	3,696.35	3,696.35-
21-00-0011	WATER EMP TAX A/P	1,627.57	.00	1,627.57
21-40-1050	WATER PROD. INSURANCE	641.80	.00	641.80
21-42-1050	WATER DIST. INSURANCE	1,426.98	.00	1,426.98
23-00-0001	SEWER CASH	.00	2,048.23	2,048.23-
23-00-0011	SEWER EMP TAX A/P	917.96	.00	917.96
23-41-1050	SEWER TREATMENT INSURANCE	440.08	.00	440.08
23-43-1050	SEWER COLL. INSURANCE	690.19	.00	690.19
45-00-0001	EMP BENEFITS CASH	.00	13,116.50	13,116.50-
45-01-1050	EMP BENEFIT HEALTH/ACC INSUR	13,116.50	.00	13,116.50
TRANSACTION TOTALS		70,106.95	70,106.95	.00

# PAYROLL REGISTER

ORDINANCE #2021-P07

3/19/2021

<u>DEPARTMENT</u>	<u>GROSS PAY</u>
GENERAL	57,167.22
ELECTRIC	28,831.87
WATER	7,067.81
SEWER	3,662.89
TOTAL	<u>96,729.79</u>

PASSED AND SIGNED THIS \_\_\_\_\_ DAY OF \_\_\_\_\_, 2021

\_\_\_\_\_  
CITY CLERK

\_\_\_\_\_  
MAYOR

# PAYROLL REGISTER

ORDINANCE #2021-P07A

**4/2/2021**

<u>DEPARTMENT</u>	<u>GROSS PAY</u>
GENERAL	48,076.73
ELECTRIC	29,658.17
WATER	7,016.06
SEWER	3,662.89
TOTAL	<u>88,413.85</u>

PASSED AND SIGNED THIS \_\_\_\_\_ DAY OF \_\_\_\_\_, 2021

\_\_\_\_\_  
CITY CLERK

\_\_\_\_\_  
MAYOR



**AGENDA ITEM #**  
CITY COMMISSION COMMUNICATION FORM

---

**FROM:** Mary Volk, City Clerk

**DATE:** March 16, 2021

**ITEM:** Resolution 1571: Adopting the Kansas Homeland Security Region A Hazard Mitigation Plan

**NEXT STEP:** Commission Motion

---

ORDINANCE  
 MOTION  
 INFORMATION

- 
- I. REQUEST OR ISSUE:** The City is asked to adopt this resolution to continue as a participating jurisdiction under the Sherman County mitigation plan. By being a participating jurisdiction of the plan we are not required to develop a separate hazard mitigation plan and the City qualifies for FEMA funding if the need arises.
- II. RECOMMENDED ACTION / NEXT STEP:** Adopt Resolution 1571 to remain a participating jurisdiction under the Sherman County Plan.
- III. FISCAL IMPACTS:** None at this time.
- IV. BACKGROUND INFORMATION:** In 2016, the City adopted Resolution 1472 which made the City a participating jurisdiction under the Sherman County Plan. By being a participating jurisdiction of the plan we are not required to develop a separate hazard mitigation plan and the City qualifies for FEMA funding if the need arises.
- V. LEGAL ISSUES:** The City would be required to develop their own hazard mitigation plan.
- VI. CONFLICTS OR ENVIRONMENTAL ISSUES:** None
- VII. SUMMARY AND ALTERNATIVES:** Asking the City to adopt Resolution 1571: Adopting the Kansas Homeland Security Region A Hazard Mitigation Plan

Commission may take one of the following actions:

1. Approve the proposal as requested.
2. Reject the proposal and move to deny the request.
3. Direct staff to pursue an alternative approach.



**RESOLUTION NO. 1571**

**A RESOLUTION ADOPTING THE KANSAS HOMELAND SECURITY REGION A HAZARD MITIGATION PLAN.**

**WHEREAS**, the governing body of the City of Goodland, Kansas, recognizes the threat that natural hazards pose to people and property within our community; and

**WHEREAS**, undertaking hazard mitigation actions will reduce the potential for harm to people and property from future hazard occurrences; and

**WHEREAS**, the U.S. Congress passed the Disaster Mitigation Act of 2000 (“Disaster Mitigation Act”) emphasizing the need for pre-disaster mitigation of potential hazards;

**WHEREAS**, the Disaster Mitigation Act made available hazard mitigation grants to state and local governments; and

**WHEREAS**, an adopted Hazard Mitigation Plan is required as a condition of future funding for mitigation projects under multiple Federal Emergency Management Agency (FEMA) pre- and post-disaster mitigation grant programs; and

**WHEREAS**, the City of Goodland, Kansas, fully participated in the FEMA prescribed mitigation planning process to prepare this Multi-Hazard Mitigation Plan; and

**WHEREAS**, the Kansas Division of Emergency Management and FEMA Region VII officials have reviewed the Kansas Homeland Security Region A Hazard Mitigation Plan, and approved it contingent upon this official adoption of the participating governing body; and

**WHEREAS**, the City of Goodland, Kansas, desires to comply with the requirements of the Disaster Mitigation Act and to augment its emergency planning efforts by formally adopting the Kansas Homeland Security Region A Hazard Mitigation Plan; and

**WHEREAS**, adoption by the governing body for the City of Goodland, Kansas, demonstrates the jurisdictions’ commitment to fulfilling the mitigation goals and objectives outlined in this plan, and

**WHEREAS**, adoption of this legitimizes the plan and authorizes responsible agencies to carry out their responsibilities under the plan.

**NOW, THEREFORE, BE IT RESOLVED**, that the governing body of the City of Goodland, Kansas, adopts the Kansas Homeland Security Region A Hazard Mitigation Plan as an official plan; and

**BE IT FURTHER RESOLVED**, the City of Goodland, Kansas, will submit this Adoption Resolution to the Kansas Division of Emergency Management and FEMA Region VII officials to enable the plan's final approval.

Adopted this 5<sup>th</sup> day of April, 2021.

---

John Garcia, Mayor

ATTEST:

---

Mary P. Volk, City Clerk



**AGENDA ITEM #**  
**CITY COMMISSION COMMUNICATION FORM**

---

**FROM:** Mary Volk, City Clerk

**DATE:** March 24, 2021

**ITEM:** Resolution 1572

**NEXT STEP:** Commission Motion

---

ORDINANCE  
 MOTION  
 INFORMATION

- 
- I. REQUEST OR ISSUE:** Annually, the City requests to waive the requirements of Generally Accepted Accounting Principles (GAAP). This resolution is required to ensure the City is compliant in operating on the cash basis and budget laws. GAAP has no significant value to the City and is more costly for the City in terms of information and audits required.
- II. RECOMMENDED ACTION / NEXT STEP:** Approve Resolution 1572 to waive the requirements of GAAP for 2021.
- III. FISCAL IMPACTS:** NONE
- IV. BACKGROUND INFORMATION:** Majority of Municipalities across the state, including Goodland, approve this resolution annually. The City has approved this resolution for many years.
- V. LEGAL ISSUES:** NONE if approved our financial statements comply with cash basis and budget laws, just need resolution for waiver.
- VI. CONFLICTS OR ENVIRONMENTAL ISSUES:** NONE if approved our financial statements comply with cash basis and budget laws, just need resolution for waiver.
- VII. SUMMARY AND ALTERNATIVES:** Approve Resolution 1572

Commission may take one of the following actions:

1. Approve the proposal as requested.
2. Reject the proposal and move to deny the request.
3. Direct staff to pursue an alternative approach.



RESOLUTION NO. 1572

A RESOLUTION TO WAIVE THE REQUIREMENTS OF K.S.A. 75-1120a (a) REGARDING GENERALLY ACCEPTED ACCOUNTING PRINCIPLES AS THEY RELATE TO THE CITY OF GOODLAND

WHEREAS, the City of Goodland, Kansas has determined that the financial statements and financial reports for the year ended 2021 to be prepared in conformity with the requirements of K.S.A. 75-1120a (a) are not relevant to the requirements of the cash basis and budget laws of this state and are of no significant value to the Governing Body or the members of the general public of the City of Goodland; and

WHEREAS, there are no revenue bond ordinances or other ordinances or resolutions of the municipality which require financial statements and financial reports to be prepared in conformity with K.S.A. 75-1120a (a) for the year ended 2021.

NOW, THEREFORE BE IT RESOLVED BY THE GOVERNING BODY OF THE CITY OF GOODLAND, KANSAS in regular meeting duly assembled this 5<sup>th</sup> day of April, 2021 that the Governing Body waives the requirements of K.S.A. 75-1120a (a) as they apply to the City of Goodland for the year ended 2021.

BE IT FURTHER RESOLVED that the Governing Body shall cause the financial statements and financial reports of the City of Goodland to be prepared on the basis of cash receipts and disbursements as adjusted to show compliance with the cash basis and budget laws of this State.

PASSED AND ADOPTED this 5<sup>th</sup> day of April, 2021 by the Governing Body of the City of Goodland, Kansas.

\_\_\_\_\_  
John Garcia, Mayor

ATTEST:

\_\_\_\_\_  
Mary P. Volk, City Clerk



**AGENDA ITEM #**  
CITY COMMISSION COMMUNICATION FORM

---

**FROM:** Mary Volk, City Clerk

**DATE:** March 24, 2021

**ITEM:** Resolution 1573

**NEXT STEP:** Commission Motion

---

ORDINANCE  
 MOTION  
 INFORMATION

- 
- I. **REQUEST OR ISSUE:** Annually the City is required to designate depositories of public funds. This resolution is required to remain compliant with State Statute.
- II. **RECOMMENDED ACTION / NEXT STEP:** Approve Resolution 1573 designating depositories for the City of Goodland.
- III. **FISCAL IMPACTS:** NONE
- IV. **BACKGROUND INFORMATION:** Requirement of State Statutes.
- V. **LEGAL ISSUES:** NONE if approved.
- VI. **CONFLICTS OR ENVIRONMENTAL ISSUES:** NONE if approved.
- VII. **SUMMARY AND ALTERNATIVES:** Approve Resolution 1573.

Commission may take one of the following actions:

1. Approve the proposal as requested.
2. Reject the proposal and move to deny the request.
3. Direct staff to pursue an alternative approach.



RESOLUTION NO. 1573

A RESOLUTION DESIGNATING DEPOSITORIES FOR THE CITY OF GOODLAND, KANSAS

WHEREAS, it is necessary that the City of Goodland, Kansas, designate depositories in compliance with K.S.A. 9-1401, and:

WHEREAS, public funds shall be deposited at BANKWEST in Goodland, Sherman County, Kansas, and at Destination Institutions using Insured Cash Sweep (ICS) through our Relationship Institution: BANKWEST in Goodland, Sherman County, Kansas, and:

WHEREAS, investment of funds may be held at BANKWEST, Peoples State Bank, FNB Bank, and Western State Bank in Goodland, Sherman County, Kansas.

NOW, THEREFORE, BE IT RESOLVED BY THE GOVERNING BODY OF THE CITY OF GOODLAND, KANSAS:

That BANKWEST, Peoples State Bank, FNB Bank, Western State Bank and Destination Institutions using ICS are designated as depositories for the City of Goodland, Kansas.

PASSED AND ADOPTED this 5<sup>th</sup> day of April, 2021 by the Governing Body of the City of Goodland, Kansas.

\_\_\_\_\_  
John Garcia, Mayor

ATTEST:

\_\_\_\_\_  
Mary P. Volk, City Clerk



**AGENDA ITEM #**  
CITY COMMISSION COMMUNICATION FORM

---

**FROM:** Mary Volk, City Clerk

**DATE:** March 26, 2021

**ITEM:** Renewal of City Property, Casualty and Liability Insurance

**NEXT STEP:** Commission Motion

---

ORDINANCE  
 MOTION  
 INFORMATION

- 
- I. REQUEST OR ISSUE:** The City insurance expires March 31<sup>st</sup>. Eklund's Insurance has been working diligently to obtain multiple bids for the insurance. Unfortunately, with the Commercial Output policy for the power plant, Hartford Insurance is the only underwriter that will bid the policy. The bid from EMC Insurance for 2021-2022 policy is \$275,967, 4% increase from 2020-2021 policy. We will be making the following endorsement changes to the policy: 1.) Medical coverage was not on all the vehicles. Our carrier reached out to our agent and they did not understand what happened, so that will increase cost \$1,568. 2.) Property at 1008 Main is deleted from the policy so that is a reduction of \$1,017. 3.) One siren location was duplicated on policy for another reduction of \$39. 4.) All sirens are listed as shelters on the policy so that will be changed.
- II. RECOMMENDED ACTION / NEXT STEP:** Motion to agree with Staff recommendation who have been directed to sign off renewal of policy to ensure coverage remained in place from April 1-5.
- III. FISCAL IMPACTS:** The bid from EMC is a 4% increase over last year.
- IV. BACKGROUND INFORMATION:** Timing to obtain all information Eklund's need for renewal has remained the same over the last number of years. Because we have a power plant and the specialized insurance coverage needed, it is a specialized market niche where limited to no companies offer coverage. As we stated in the past, you want a company that is designed for municipalities to cover your insurance policy. EMC Insurance is the largest municipal insurance company available. It is also important with a policy like this that you maintain an ongoing relationship with your agent and do not change carriers every year. Eklund's Insurance has asked for a three year agent agreement from the City in order to maintain this relationship.

In the recent past, Commissioner Thompson has requested an electronic file for the binder for insurance. I requested such for this renewal; therefore, all supporting documentation for this item is in a number of files in the drive the Commission accesses to review documents. (Same drive as where the contracts you review are located.)

V. **LEGAL ISSUES:** NONE

VI. **CONFLICTS OR ENVIRONMENTAL ISSUES:** NONE

VII. **SUMMARY AND ALTERNATIVES:** Approve staff recommendation to renew the 2021-2022 Property, Casualty and Liability Insurance policy with EMC through Eklund's Insurance.

Commission may take one of the following actions:

1. Approve the proposal as requested.
2. Reject the proposal and move to deny the request.
3. Direct staff to pursue an alternative approach.



Dwight D. Eisenhower State Office Building  
700 S.W. Harrison Street  
Topeka, KS 66603-3745

Julie L. Lorenz, Acting Secretary  
Michael J. Moriarty, Chief



Phone: 785-296-3841  
Fax: 785-296-8168  
kdot@publicinfo@ks.gov  
<http://www.ksdot.org>  
Laura Kelly, Governor

March 18, 2021

Sarah Scheopner  
City of Goodland  
P.O. Box 59 204 West 11th  
Goodland, KS 67735

Dear Sarah Scheopner,

We are pleased to announce your U.S.C. 49-5311 grant application for State Fiscal Year (SFY) 2022 has been approved as follows:

- Capital - (C.F.D.A. 20.509) None Requested
- Federal 5311 Operating - (C.F.D.A. 20.509) \$13,900.00
- Federal 5311 Administrative - (C.F.D.A. 20.509) \$1,720.00
- State 5311 Operating - \$5,560.00

The amounts listed above do not reflect CARES Act funding that will be provided for operating costs at 100% until it is depleted. We will keep you informed as to when the operating funds will return to requiring your 30% local share. Please be prepared for this transition to occur late in this calendar year.

As of July 1<sup>st</sup>, the administrative costs will return to 80% federal and 20% local. All capital awards for this grant cycle will also return to an 80% federal and 20% local share as well.

If you have any questions, please contact me at (785) 296-4907 or [Jon.Moore@ks.gov](mailto:Jon.Moore@ks.gov).

Sincerely,

A handwritten signature in black ink, appearing to read "Jon Moore".

Jon Moore  
Public Transit Manager

### 2022 Budget Calendar

Date	Action	Participants
April 16, 2021	Distribute budget worksheets and CIP forms to Department Heads	CL DH
May 12, 2021	Completed Department Head budget worksheets and CIP forms returned to City Clerk	CL DH
May 26-27, 2021	Department Head workshops with City Clerk and City Manager	CL CM DH
July 6, 2021	City Commission Budget Workshop	CC CL CM DH AB
July 20, 2021	<b>Last available date to get budget to paper for publication</b>	CL
July 22, 2021	Publish Budget Notice	CL
August 2, 2021	Hold Budget Hearing and approve 2022 Budget	CC CL CM
August 25, 2021	Certify budget with County Clerk	CL

**Additional Notes:**

1. The July Budget Workshop will take place during regularly scheduled Commission meeting.
2. There must be at least 10 days between budget publication (Jul. 22) and hearing (Aug. 2)

Key	
CC	= City Commission
CL	= City Clerk
CM	= City Manager
DH	= Dept. Heads
AB	= Advisory Boards



**City of Goodland**  
204 W 11<sup>th</sup>  
P.O. Box 59  
Goodland, Kansas 67735

Phone: 785-890-4500  
Fax: 785-890-4532  
[cityofgoodland.org](http://cityofgoodland.org)  
[mary.volk@cityofgoodland.org](mailto:mary.volk@cityofgoodland.org)

---

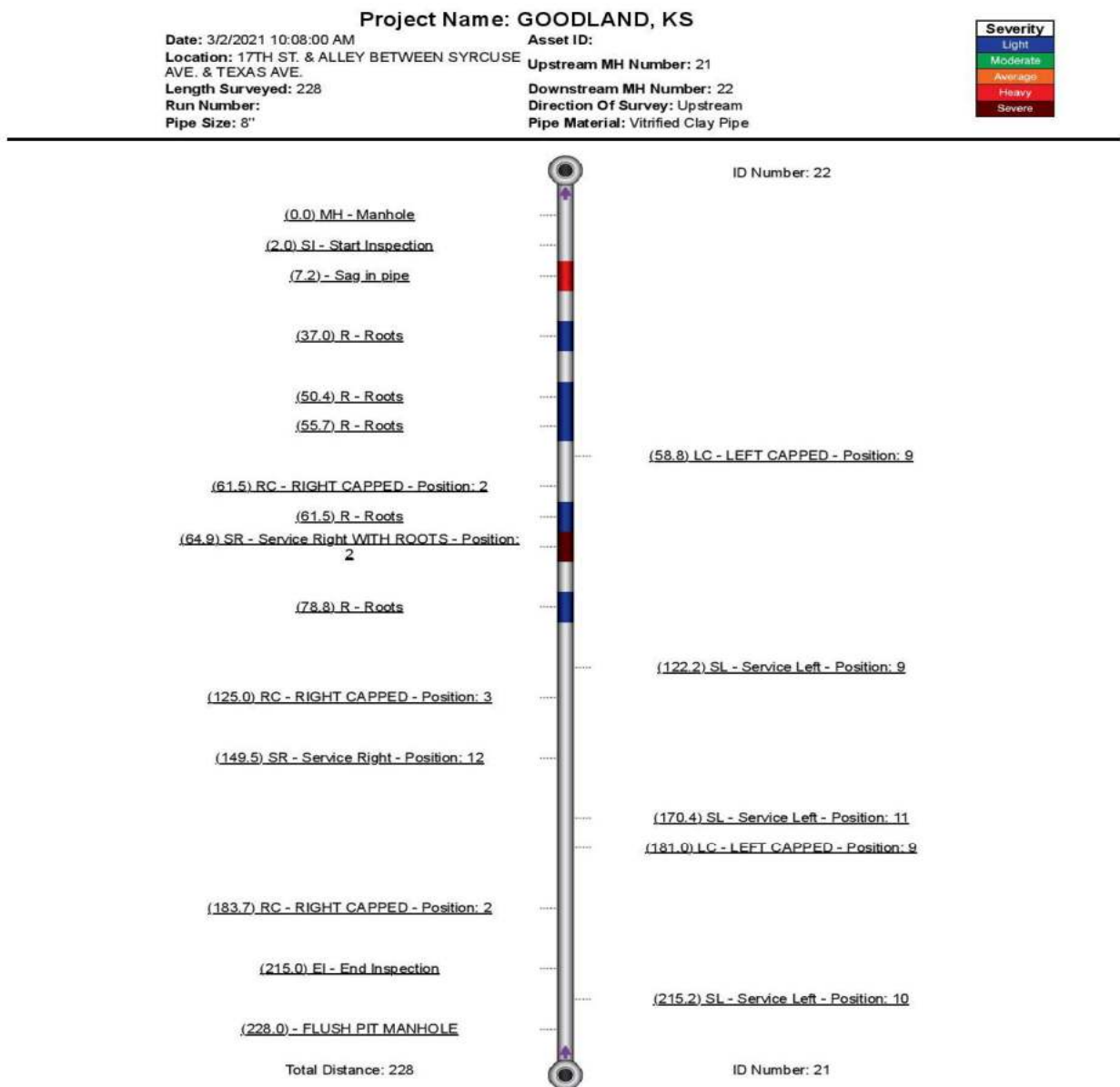
Date : March 31, 2021  
To: City Commission  
From: Mary Volk, City Clerk  
Subject: Department Staff Report

- Reconcile Month end, run reports
- Continue Training Calli for Front Desk
- City representation at Cemetery Board Meeting and follow-up with questions from meeting
- City Representation at Airport Board Meeting and follow-up with information from meeting
- Worked on information for extraordinary power costs in February. This is reviewing costs, options and reviewing reserves with Dustin, telephone conversations with Prairie Land, following legislative session on information for low interest loan they passed for municipalities and contacting representatives for approval, compiling information for commission as requested, working with Jake for ordinance required to adopt plan, special commission meetings and minutes, setup worksheets to track repayment of costs, contact software system on setting up fees adopted
- Worked with Jake on Farm Lease agreement amendment for airport land purchased last year
- Processed Reimbursable Agreements with FAA on the relocation of PAPI to prepare for Runway 5-23 grant
- Continue Scanning and updating Bad Debt Information to store all files electronically
- Continue scanning AP checks and supporting documentation
- Review information on the American Water Infrastructure Act of 2018 for Risk and Resilience Assessment need to complete for compliance
- Renew Low income information for low income utility customers
- Work with Eklund's Insurance on Insurance renewal for property, casualty and liability insurance. Reviewed information with City Manager. I will have departments review vehicle and property information on policy
- Input benefit updates in PR system for all employees

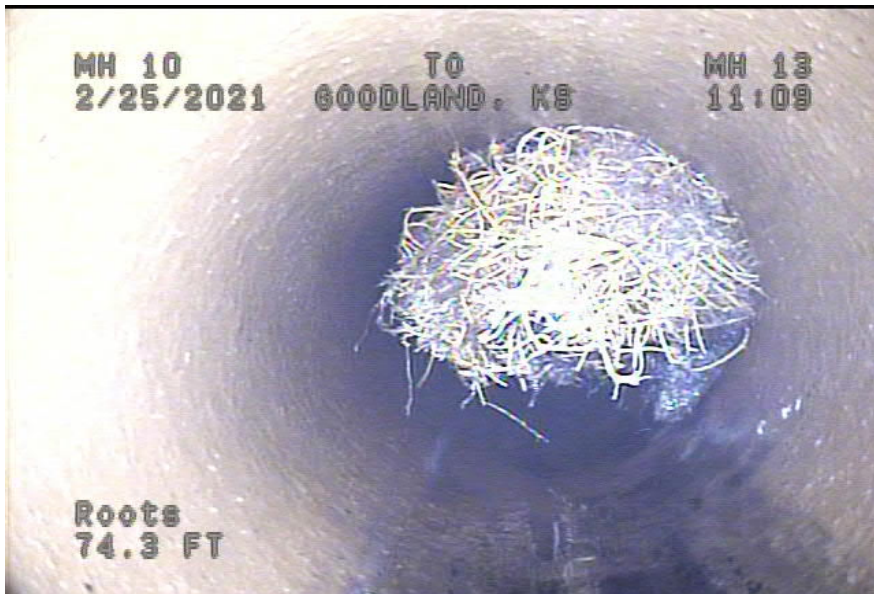
- Water information for KMEA on rate study
- Work with Jessica on hangar lease renewals
- KLC in NW Kansas workshop
- Process March County Distribution from County
- Insurance Brokerage RFP meeting and review RFP
- Begin work for 2022 Budget – calendar, input information from 2021
- HR information for new hires to fill open positions
- Setup information for 24/7 CID sales tax – this is first distribution
- Compiling information requested by the Auditors to begin 2020 audit, schedule onsite audit and contact library and fire for information and communicate when they will be onsite
- Process first quarter budget transfers
- Answer questions from Department Heads
- Make contact to high school for summer recreation concessions
- Begin review of Unclaimed Utility Deposits
- Kansas Emergency Rental Assistance information for COVID expenses
- Cemetery – questions, sell plots, permits
- Normal Daily/Monthly Operations for office

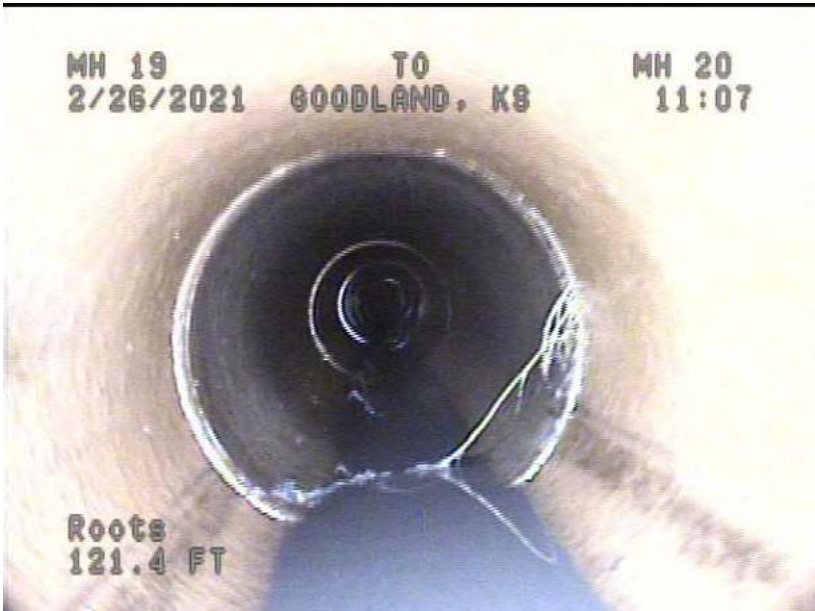
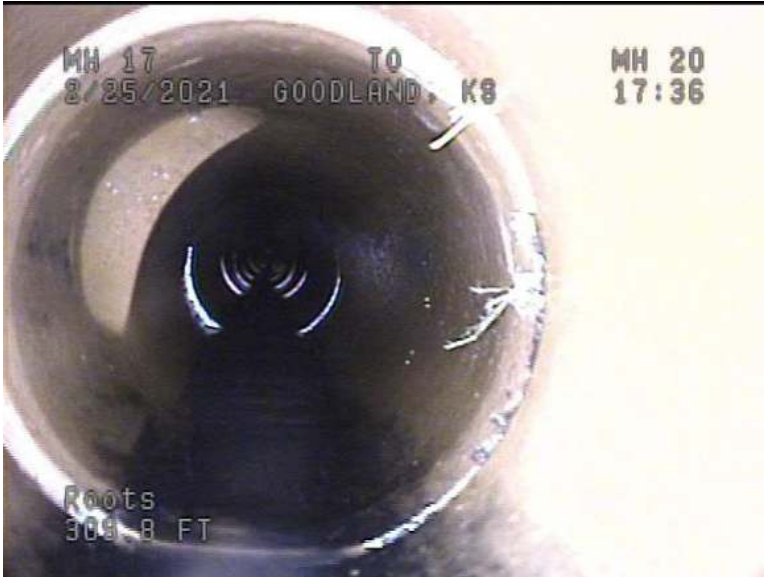
## Water Department Monthly Report - March 2021

As budgeted again, Johnson Services did camera and cleaning work in 16,472 feet of sewer lines. I have included a few pictures from the project to show the Commission some results from the project. These pictures show roots in main lines, roots in private taps and they also found some additional taps that we will be able to utilize in the future when customers want to tap into our sewer main. I have also included some pictures that show the deterioration of manholes and lids that we would not have known about without this project. In the future I will need to plan and budget for the project where Johnson Services can clean and epoxy the manholes and lids. This project has been beneficial in finding the cause for trouble spots in our sewer system. Thank you for allowing this camera project the last few years. We will need to continue to budget money to finish the system and repair of manholes and lids.

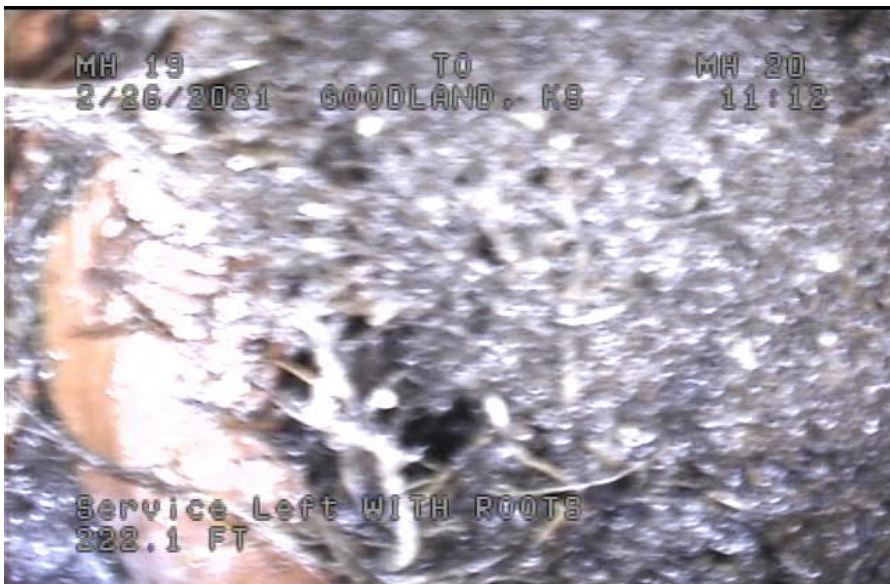




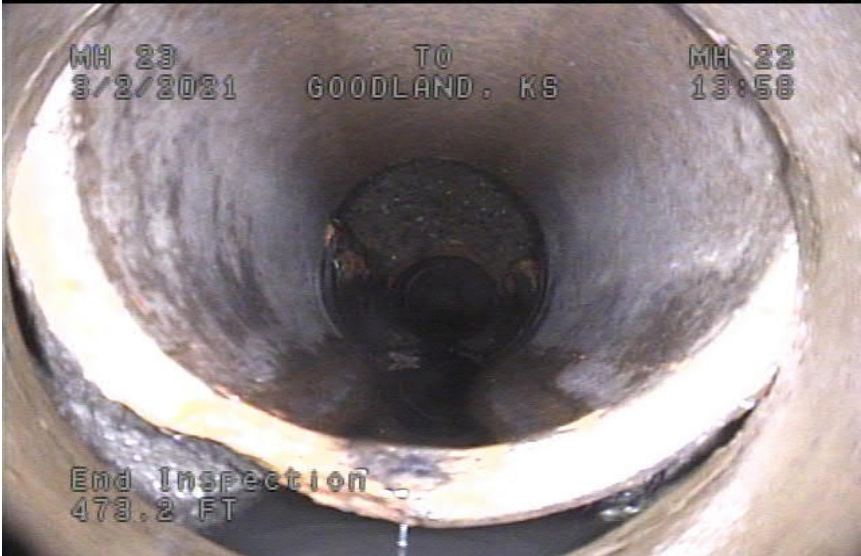
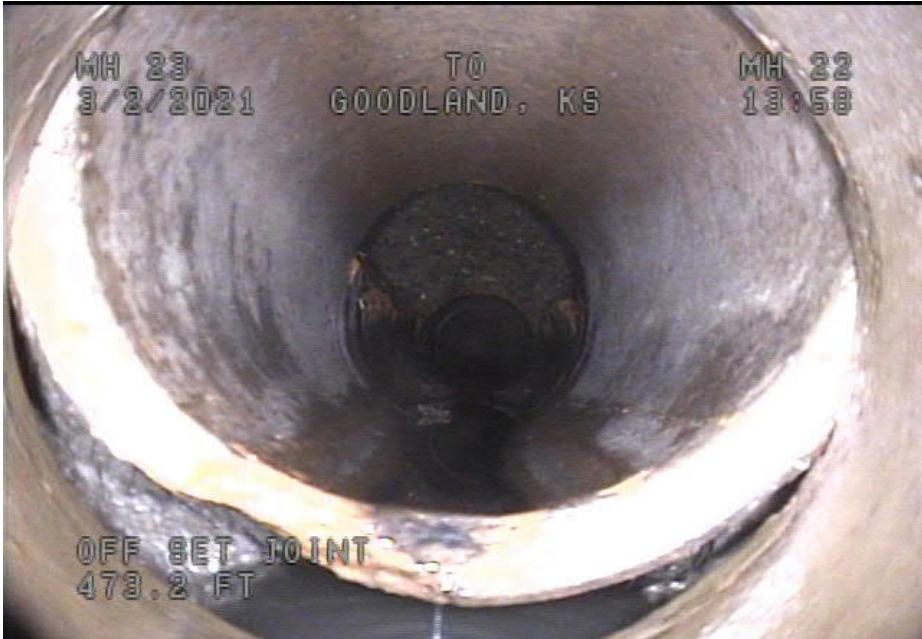
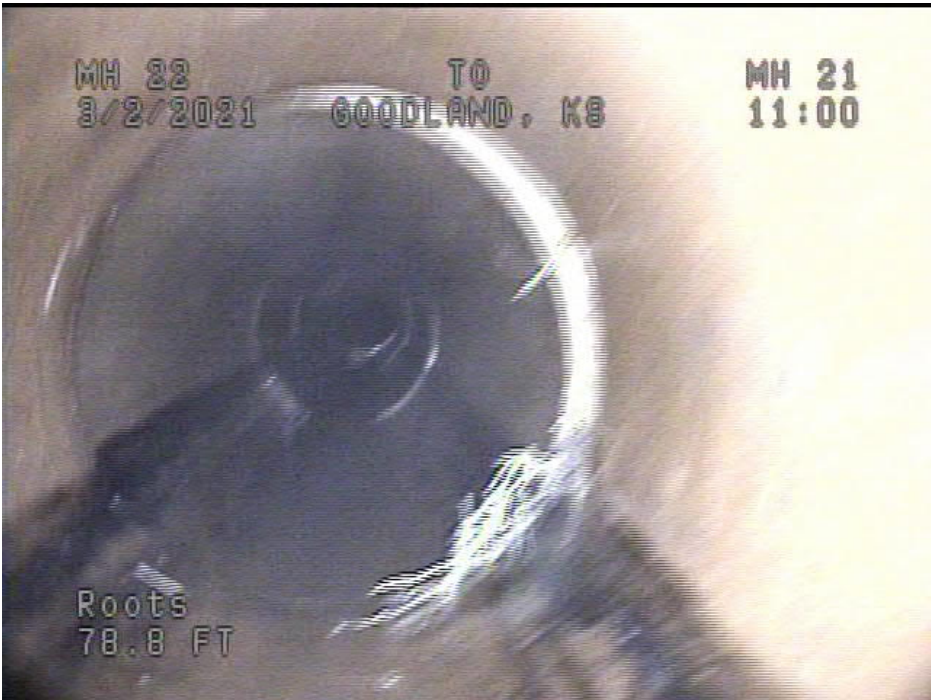
















## WATER DEPARTMENT

Daily fuel inventory  
End of the month well readings  
Cleaned and greased equipment  
Wells and liftstations  
4 log and chlorine residual  
Changed meter at 211 N Main  
Vehicle check lists  
Cleaned Shop  
Treatment Plant checks  
Opened sewer manholes for Johnson service co  
End of month fuel report  
Emailed fuel report to Sarah  
Flushed 10" line industrial park project  
10" water sample  
Distribution meter readings  
Workorders  
Ray, Joey and I went to tank management class in Colby  
Hach serviced CL17 and Nitrate analyzer  
Went to Ellis to pick up Sewer Plant computer  
Coded tickets  
Shut water off at 517 E 9<sup>th</sup>, 906 Walnut, and 1525 Cattletrail  
Turned water on" “  
Filled in manholes  
Turned water off 1013 Walnut  
Worked on time cards  
State water samples  
Changed meter 124 W HWY 24  
Worked on the standpipe  
Replaced service at 425 Center  
H&H bored new line for 425 Center  
Bid openings for Vactron Pickup  
Worked on Lead and Copper sample plan  
Filled in holes for 425 Center  
Pressure test on 10" main line  
Fixed leak 1310 Syracuse  
Replaced service 580 E ArmoryRD  
Turned water off 804 Walnut, 1321 Broadway, turned water on 804 Walnut, 1321 Broadway  
Worked on liftstation #4  
Changed chlorine bottle at treatment plant  
Locates  
Johnson Service Company sewer cleaning and camera project  
Finished media project at the treatment facility (City of Scott City helped with the project)

Wastewater Dept

Daily maintenance

Haul sludge

Haul Grit and rags to landfill

Equipment maintenance

Worked on gate

Grease equipment

# STREET & ALLEY

## March Monthly Report

---

### PROJECTS

#### **CURB REPLACEMENT AND ALLEY ENTRANCE**

- 12<sup>TH</sup> STREET BETWEEN ARCADE AND COLLEGE

#### **CATTLE TRAIL WATER DRAINAGE ISSUES**

- GRADED DIRT THAT WAS TOO HIGH ON THE SHOULDERS SO THE WATER COULD SHED OFF THE OFF RAMP FROM CATTLETRAIL TO THE RAILROAD TRACKS

#### **PAINTED CHERRY STREET BY THE VAN GOUGH**

- PAINTED STOP BLOCKS, ARROWS, CROSSWALKS, DOUBLE LINES, AND RAIL ROAD CROSSING
- THE MOISTURE WE RECEIVED SOAKED INTO THE MATERIAL THOUGH AND CAUSED DAMAGE TO THE NEW PAINTED SURFACES!

#### **WINDOW LEAK AT POLICE DEPT.**

- SCRAPED ALL OF THE OLD WINDOW SEALANT OFF ALL GYM WINDOWS AND VENTS.
- RESEALED WITH NEW SEALANT

#### **RENTED POLYPATCH MACHINE**

- THIS PROJECT IS GONNA FINISH TOELKES, EUSTIS FROM 2<sup>ND</sup> TO 4<sup>TH</sup> AND START ON 8<sup>TH</sup> AND KANSAS GOING NORTH.

### NORMAL WORK DUTIES

- Mondays Clean Shop, Vehicle, and Equipment checks
- Friday Main St. trash and recycle bins
- Time cards and coding bills
- Poured concrete for Water Dept. Man hole
- Poured concrete side walk in for Water Dept.
- Poured concrete at swim pool
- Changed bits on Mill Head
- Helped State with project needing the Vac Tron
- Joey recertified for fuel tank management
- Changed loader bits out
- Fixed snow fence
- Pealed Old Fire chief Tahoe decals off
- Kenton and Zach went to Salina for credit hrs. for public health spraying license and to get mosquito fogger calibrated.
- Swept street on nice days
- Monthly Safety meeting
- Worked on fixing alleys
- Fixed PJ trailer (bent Gate)
- Worked on sizing the concrete pile down East
- Stop sign replacement(12<sup>th</sup> & Wyoming)
- Maintaining gravel roads after rain
- Graded airport
- Had electrician put limit switch on door at airport
- Looked at T-hangar # 10
- Clean leaves off roof at city office, and had Overhead door fix leaking roof
- New Employee (Cameron Hayes)



## MECHANIC

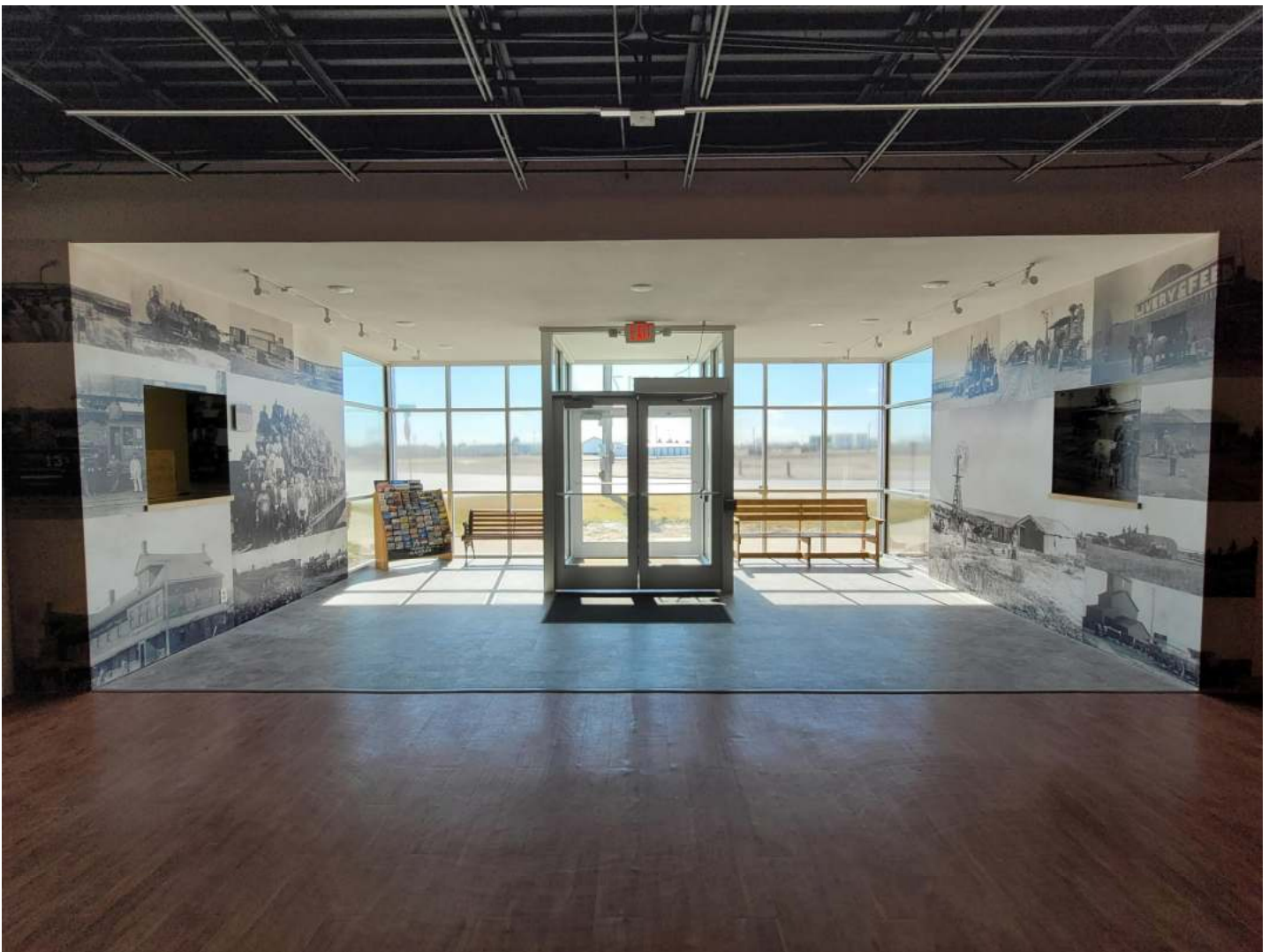
- Finished fire expedition
- Serviced #18 pickup
- Serviced #16 skid steer
- Add lights to police #2
- Service #5 water truck & rear brakes
- Assist Foley tech. on generator # 69
- New tire #10 Tandum
- Serviced #72 parks ranger
- Glow plug, and coolant leak on line crew #49
- Replaced main broom ,dirt shoe, toe bar, with bracket #29 sweeper
- Installed lights to the bed of #80 water
- Ordered parts for dog door on #6 police and fixed
- Found fluid leak on #49 line truck
- Tested and replaced battery to mosquito fogger





## High Plains Museum Report

- The entryway renovation is completed.
- Railroad exhibit is up and will run through June. Special thanks to Rod Cooper, Jim Ross and Dalton Boggs for loaning items to this exhibit.
- The Parks Department built a new hanging storage unit to better store out textile collection. This was recommended by Jennifer Tracz, the textile preservationist working with us.
- The 7th grade social studies classes came to visit the Railroad exhibit March 25 and 26.
- Staff is working on digitizing the railroad archive collection and inventorying collections.



Completed entryway



New hanging storage for textiles.

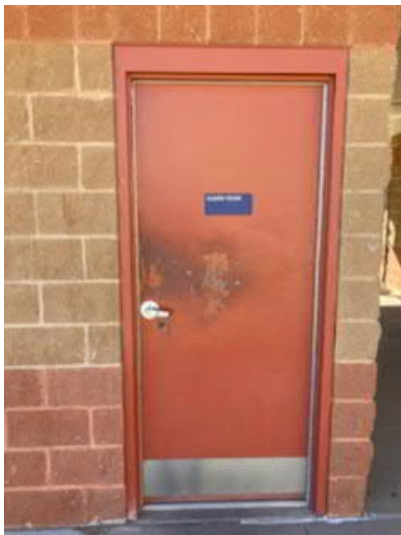


7th grade Social Studies class touring the Railroad exhibit.

## Parks & Recreation Department March Report

The Parks Department has been busy doing maintenance/upkeep:

- Painted the inside of Phillips Park bathrooms
- Painted exterior bathroom doors at Phillips Park, Rosewood Park, Gulick Park, and Steever Park
- Painted all 12 exterior doors at the waterpark and caulked cracks on interior/exterior walls
- Built clothing rack for Sami at the museum
- Replaced 400ft of new wood borders along Van Gogh brick sidewalk
- Put up batting cage net for Tess at 4-plex fields
- Mowed and bagged grass on all five ballfields at Centennial Park, preparing for softball and baseball season



BEFORE



AFTER





Museum Clothing Rack



BEFORE



AFTER

### **Fire Department:**

- Write fire reports to NFIRS as fire/rescue calls come in.
- Work on budget.
- Continue business fire pre-plan reviews and updates.
- Paramedic online CEU classes.
- Monthly fire apparatus inspections.
- Ladder 1 had two hydraulic lift cylinders repaired and put back in service.
- TNT and Hurst extrication equipment was serviced and tested and are ready for operation.
- Continue testing 1 ½”, 2 ½”, and 3” fire hose per ISO/NFPA regulations and standards.
- New Fire Chief vehicle (2020 Ford Expedition) is in service and operating.
- Regular Fire Department Training on Tuesday – April 6<sup>th</sup>, and Tuesday – April 20<sup>th</sup> starting at 7:00 pm.
- Fire personnel have wildland training Thursday – April 15<sup>th</sup> and 16<sup>th</sup> at 6:00 pm with Kansas State Forestry Service.
- Fire personnel will have live wildland burning training on Saturday – May 17<sup>th</sup> at 8:00 am with Kansas State Forestry Service.
- Fire personnel have wildland training Thursday – April 29<sup>th</sup>, and 30<sup>th</sup> at 6:00 pm with Kansas State Forestry Service.
- Fire personnel will have live wildland burning training on Saturday – May 1<sup>st</sup> at 8:00 am with Kansas State Forestry Service.
- Race standby at the Sherman County Speedway on Saturday – April 17<sup>th</sup> at 1:45 pm.

### **Building Department:**

- Work on budget.
- Mail out electrical contractor/tradesmen license cards.
- Mail out notification letters to electrical contractor/tradesmen who did not renew licenses that they are no longer allowed to work in the City of Goodland.
- Continue inspections of 24/7 Travel Shoppe when called for inspections.
- Building permits for different projects happening around Goodland and performing inspections on these projects.
- Answering questions from the public on building and zoning issues.

### **Code Enforcement:**

- Work on budget.
- Drive Goodland looking for code violations.
- Investigating code violations that are called or mailed into office.
- Scanning old building permits and code violation letters to M-files.
- Following up on code violations to see if they have been abated and make contact with City Attorney if not.

- Continue working with City Attorney on how to properly deal with inoperable vehicles.



## IT Department Report

- General Maintenance and Troubleshooting
  - Computer Issues
  - Printer Issues
  - Network Issues
  - Service Requests and Follow-ups
- Documentation
  - IT Procedures
  - IT Policies
  - Configurations
    - Network, Software, Desktop, Laptop, Server, Phone, Website
  - Diagrams
    - Network, Building, Routing
- System Updates & Maintenance
- Website Updates & Maintenance
- Adding additional network drops to PD.
- Updated Wireless microphones for live streaming

**Staff Report for City Commission from Goodland Municipal Court**

**Training – Judge’s Conference** – April 26 & 27, 2021 – To be held virtually thru Zoom.

**Cases filed to April 2:** 50

**Court Held :** March 10<sup>th</sup> & 24<sup>th</sup>

Monthly Report for March

March 1-March 31

Cases-82

Calls for Service-415

Arrests-13

Citations-22

Written Warnings-14

- 
1. We were dispatched to Super 8 for a possible stabbing. We arrived and there was not a stabbing. This call turned into a search warrant, which resulted in drug paraphernalia, possible identity theft paraphernalia, and washed currency (counterfeiting). I called the KBI who came the next day. The KBI took photographs of everything and was going to call the Secret Service. The KBI was shocked at how much information was found. Officers involved were Chief Hayes, Assistant Chief Erhart, K9 Officer Mader, and Officer Luther.

- 
2. Several traffic stops, DCF assists, and business walk-throughs

---

3. Drug case resulting from a traffic stop by Assistant Chief Erhart and Officer Luther. The findings are as follows:

- 8 containers marked "THC Concentrates" all unopened. The total weight was approximately 439 grams total.

- 1 bag marked "Rocky Mountain High THC" which weighed approximately 40 grams.

- 8 bags marked "Cannabis Flower THC" all unopened which weighed approximately 73 grams total.

- 2 bags marked "Seeds and Smith THC" which were opened and contained green leafy vegetation which weighed approximately 90 grams total.

- 6 black containers marked "High West Cannabis THC" with green leafy vegetation inside which weighed approximately 215 grams total.

- 4 black containers marked "High West Cannabis THC" with green leafy vegetation inside which weighed approximately 68 grams total.

- 1 black container marked "Canna Botica THC" with green leafy vegetation inside which weighed approximately 79 grams.

- 1 black container marked "Canna Botica THC" with green leafy vegetation inside which weighed approximately 79 grams.

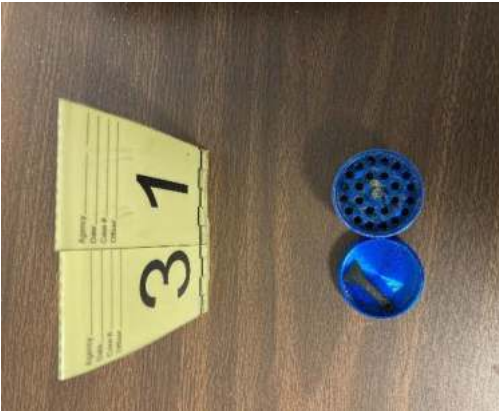
- 1 white container marked "LivWell THC" with green leafy vegetation inside which weighed approximately 120 grams.

- 1 black container marked "The Dab THC" with green leafy vegetation inside which weighed approximately 91 grams.
  - 2 black bags marked "The herbal center THC" with green leafy vegetation inside which weighed approximately 81 grams total.
  - 1 black bag marked "Golden Meds - Federal THC" unopened which weighed approximately 38 grams.
  - 2 black bags marked "River Rock South - THC" unopened which weighed approximately 82 grams total.
  - 1 orange/white container marked "Fresh cannabis THC" unopened which weighed approximately 21 grams.
  - 16 black containers marked "Cannabis Distilled Cartridges THC" unopened which weighed approximately 347 grams total.
  - 8 containers marked "THC Concentrates" all unopened. The total weight was approximately 441 grams total.
  - 8 packages marked "The Lodge THC wax" unopened which weighed 50 grams total.
  - 16 black containers marked "Cannabis Distilled Cartridges THC" unopened which weighed approximately 348 grams total.
  - 1 black container marked "Canna Botica THC" with green leafy vegetation inside which weighed approximately 79 grams.
  - 2 black packages marked "Goldwater Extracts THC" unopened which weighed approximately 17 grams total.
  - 6 white containers marked "Goldwater Extracts THC" unopened which weighed approximately 307 grams total.
  - 5 yellow packages marked "Lemon nade THC" with green leafy vegetation inside, which weighed approximately 48 grams.
  - 2 black packages marked "Grandiflora Cannabis Flower THC" with green leafy vegetation inside, which weighed approximately 19 grams total.
  - 1 blue package marked "Honey Bun Cannabis Flower THC" with green leafy vegetation inside, which weighed approximately 9 grams.
  - 1 black container marked "The Dab THC" with green leafy vegetation inside which weighed approximately 80 grams.
- \$2,000 in cash (filed for seizure)













- 
4. Drug interdiction operation with the Sherman County Sheriff's Office.

---

  5. Armed intruder table top exercise with GRMC. There will be a full-scale exercise in the summer.

---

  6. Meals on Wheels

---

  7. Jamie McKinney resigned. We have an applicant set up for testing and interview.

---

  8. Officers Plueger, Luther, and Feasel all graduated the Kansas Law Enforcement Training Center.





- 
9. Started a “partnership” with Sherman County Early Childhood Center. I have agreed for me or other officers go to the school once a week to read to the children, go outside and play with the children, or whatever is on the agenda with the school.

## ***Electric Distribution report for March 2021***

- Repair gelcoat damage to our booms and buckets on our trucks.
- Replacement of cutouts and arrestors in alleys.
- Worked on softball field lighting. Replaced four infield fixtures on the NE diamond to LED. Used those that we took down to replace other fixtures that were bad.
- Monthly substation checks.
- Application of Pest Deterrent to keep squirrels and pigeons out of substations and Loop/Feeders switches, open cutouts and lightning arrestors.
- Weekly equipment checks.
- Maintenance on our transformer holding facility after the rain.
- Energized the new padmount transformer at the HS track.
- Set new steel poles with new LED lighting at the HS track that USD 352 paid for a year ago.
- Installed a temp power source for vendors at the Home & Garden show.
- Re-set a couple of school zone timers.
- Locates.
- Work Orders from the office.
- Non Payment cutoffs.
- Hired Drew Dautel as a Lineman. He comes to the city having completed Power Distribution training from DCCC.

## ***Electric Production report for March 2021***

- Training continues for new operator.

## **Annual Maintenance Checklist**

- Serviced all engine governors.
- DLA Rocker assemblies.
- Serviced all electric motors.
- Serviced Outboard Bearings.
- Serviced Turbos
- Serviced Catalyst Monitoring systems.

## **Monthly Generation**

- Generated for maintenance with Units # 6,7,13

## **Unit #6**

- Pulled heads off and pistons out of the # 6 & 7 cylinders.
- Cleaned all parts and replaced seals, gaskets and piston rings.
- Reinstalled all parts, pistons, heads and brought engine back into service.

## **Miscellaneous**

- Daily Data Logging.
- Monthly record keeping.
- Safety Inspections.
- General Facility Maintenance and Upkeep.
- Installation of Bird Deterrent strips.
- Prep work for Unit #3 exhaust project.
- Yard Maintenance.

## **Compliance Paperwork**

- Still waiting on our Natural gas bill from Constellation to come in. It is almost a month late.

