



**CITY COMMISSION AGENDA**  
**MONDAY, JULY 20, 2020**  
**204 W. 11<sup>TH</sup> – 5:00 P.M.**

**JOHN GARCIA – MAYOR**  
**AARON THOMPSON – VICE MAYOR**  
**JAY DEE BRUMBAUGH – COMMISSIONER**  
**JJ HOWARD – COMMISSIONER**  
**GARY FARRIS – COMMISSIONER**

- 
- 1. CALL TO ORDER**
    - A. Roll Call
    - B. Pledge of Allegiance
  - 2. PUBLIC HEARING**
    - A. Rezoning of 1612 Colorado Ave.
  - 3. PUBLIC COMMENT**
  - 4. CONSENT AGENDA**
    - A. 07-06-20 Commission Meeting Minutes
    - B. Appropriation Ordinances 2020-14; 2020-14A; 2020-P14
  - 5. ORDINANCES AND RESOLUTIONS**
    - A. Ordinance 1731: Rezoning of 1612 Colorado Ave.
  - 6. DISCUSSION**
    - A. FY 2021 Budget
    - B. Economic Development Board Questions
  - 7. REPORTS**
    - A. City Manager
    - B. Municipal Clerk/Judge
    - C. Director of Public Power
    - D. IT Director
    - E. City Commissioners
    - F. Mayor
  - 8. ADJOURNMENT**
    - A. Next Regular Meeting: August 3, 2020

**NOTE: Background information is available for review in the office of the City Clerk prior to the meeting. The Public Comment section is to allow members of the public to address the Commission on matters pertaining to any business within the scope of Commission authority and not appearing on the Agenda. Ordinance No. 1730 requires anyone who wishes to address the Commission on a non-agenda item to sign up in advance of the meeting and to provide their name, address, and the subject matter of their comments.**



## CITY OF GOODLAND

204 W. 11<sup>TH</sup> ST.  
GOODLAND, KANSAS 67735  
KANSAS BEGINS HERE!

### MEMORANDUM

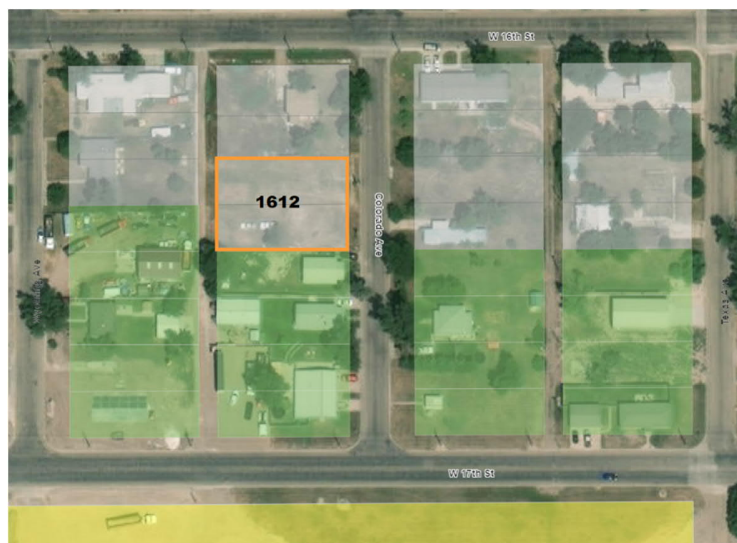
TO: Mayor Garcia and City Commissioners  
FROM: Andrew Finzen, City Manager  
DATE: July 20, 2020  
SUBJECT: Agenda Report

#### Public Hearing:

##### A. Rezoning of 1612 Colorado Ave.

Property owners Raul and Lisa Rodriguez have applied for a zoning change at 1612 Colorado Ave. The property is presently zoned R-1 residential and the requested change would be to a C-1 commercial zone. As can be seen from the image below, the property is surrounded by both commercial and residential properties, so the requested change would not constitute spot zoning. Per City zoning requirements, all property owners within 300 feet of this property have been notified of the requested change, and this Public Hearing offers them the opportunity to be heard, along with the property owners. A packet of information pertaining to this request is included in your Agenda Packet, and includes a) Article 9 of the City's Rezoning Procedures, b) the completed Rezoning Application, c) the property owner's Warranty Deed, d) a letter from the applicants, e) a listing of all properties notified, f) the public hearing notice mailed, and g) proof of permit fee payment.

The Public Hearing is an opportunity for any interested parties to be heard on this matter. The Mayor should open the public hearing, receive all input, and then close the public hearing. The Commission should then discuss this matter under Ordinance 1731 on the agenda, and if the Commission is in favor of enacting the zoning change, it can approve Ordinance 1731 at that time.



## **Consent Agenda:**

*RECOMMENDED MOTION: I move that we approve Consent Agenda items A and B.*

## **Ordinances and Resolutions:**

### A. Ordinance 1731: Rezoning of 1612 Colorado Ave.

This is the action item for the Public Hearing. If approved, 1612 Colorado will be rezoned from R-1 to C-1 after the ordinance has been published. The ordinance also authorizes the change to be made in the City's Official Zoning Map. While the City does not currently have a Planning Commission to make a formal recommendation to Commissioners, staff does recommend the proposed zoning change.

*RECOMMENDED MOTION: I move that we approve Ordinance 1731.*

## **Discussion:**

### A. FY 2021 Budget

Commissioners discussed the budget at the July 6 meeting and agreed to reduce the 20% health insurance increase down to 15%. Other than that, there was not consensus on how to proceed forward with health insurance budgeting. Commissioners requested several budget-related documents over the last two weeks. These documents were emailed to Commissioners and will be provided at the meeting as a handout. If Commissioners do not reach agreement on the budget at this meeting, we will have to schedule a new public hearing date and special meeting.

### B. Economic Development Board Questions

The Economic Development Board met on Tuesday, July 14 and had several questions that they feel need to be answered by the City and County Commissions before they can proceed. This is on the agenda for City Commissioners to discuss, but the Board also feels that it is important that they get one answer from both boards. Thus, we may want to consider having another Joint Meeting on August 3. The questions posed are as follows:

- What is the desired timeline of getting the board established and someone hired?
- How many positions are being budgeted for?
- What is the startup budget available to get this organization/department operational?
- What will the operational budget be for this organization/department once both entities are funding it in FY21?
- What happens to the Chamber of Commerce funds?
- Do we have access to City and County legal counsel?
- Will the organization be a county department or 501c3/501c6?
- Will all organizations be consolidated into one, or continue to exist separately?

## **Reports:**

### A. City Manager

- Cost-Share grant
- Welcome Center parking lot
- Auditor presentation: August 3
- Public hearing on 1521 Kansas Ave: August 3

### B. Municipal Clerk/Judge

Municipal Clerk/Judge Leann Taylor will provide her Department Head report to the City Commission.

### C. Director of Public Power

Director of Public Power Dustin Bedore will provide his Department Head report to the City Commission.

### D. IT Director

IT Director Joshua Jordan will provide his Department Head report to the City Commission.

**GOODLAND CITY COMMISSION**  
**Regular Meeting**

**July 6, 2020**

**5:00 P.M.**

Mayor John Garcia called the meeting to order with Vice-Mayor Aaron Thompson, Commissioner Jay Dee Brumbaugh, Commissioner J. J. Howard and Commissioner Gary Farris responding to roll call.

Also present were Rich Simon – Director of Public Works, Dustin Bedore – Director of Electric Utilities, Joni Showalter-Police Chief, LeAnn Taylor – Municipal Court Judge/Clerk, Sami Windle – Museum Director, Joshua Jordan – IT Director, Kenton Keith – Street Superintendent, Neal Thornburg – Water/Sewer Superintendent, Danny Krayca – Parks Superintendent, Brian James – Fire Chief, Mary Volk - City Clerk and Andrew Finzen - City Manager.

**Mayor Garcia led Pledge of Allegiance**

**PUBLIC COMMENT**

**Charlene Jostes – Mental Health First Aid** – Charlene Affiliate Director of KNOW ME Network stated, I am providing information to educate not only law enforcement and EMS, but the community at large about mental illness. Mental health conditions are on the rise, even in Sherman County. Mayor Garcia asked, are you the director for several counties? Charlene stated, yes eighteen counties. Mayor Garcia asked, will you draw attendees from those counties for training? Charlene stated, I cannot arrange the training, it has to be within a department. However, other counties are interested in coming to Goodland if we can get the training so they do not have to drive to Kansas City.

**JOINT CITY-COUNTY-BOARD OF EDUCATION MEETING**

- A. County Commission Call to Order** - County Commissioner Rod Blake called the County Commission meeting to order with County Commissioner Larry Enfield reported as present. County Chairman John Topliff was reported absent. Also present from the County are Maria Parish – Deputy County Clerk and Rachele Standley – County Appraiser.
- B. Board of Education Call to Order** – Board President Jessica Cole called the Board of Education meeting to order with Board Members Terry Smith, Stacey Price and Brad Bergsma reported as present. Travis Daise, Trevor Linton and Brad Schick were reported absent. Also present from USD 352 are Bill Biermann – Superintendent and Deb Winter-Secretary.
- C. Neighborhood Revitalization Plan Discussion** –Rachele stated, the NRP expires in December. This has been a joint agreement with the City, County and School District. I want to bring the plan to your attention in case there are changes you would like to address. I have minor language changes plus the value of agriculture property will decrease within couple years, which will directly impact the County and School. Once the value goes down it causes a problem with the tax lid. The Attorney General will take about three months to approve plan and I am uncertain they are working full time with COVID. I feel we need to approve and submit plan to them as soon as possible. The plan has been in county for a number of years but people are not aware of benefit. Bill asked, can you submit changes to school when available to review. Rachele stated, yes I just need to know what information everyone would like clarified. County Commissioner Enfield stated, with the plan, neither the County Appraiser or Commission have control over the values. Jessica asked, you know values will decrease within two years? Rachele stated, yes when high values drop off we see a significant drop in the value for agriculture property. **Board of Education Member Travis Daise reported to meeting and County Chairman Topliff reported via telephone.** Rachele stated, we get a packet from the state to determine agriculture values. We work to keep agriculture use values while eastern Kansas would like to have them at market value. Mayor Garcia asked, how long before they decrease? Rachele stated, I estimate in 2023 and it will only pertain to agriculture values. If there are problems meeting budget requirements and you give a large number of rebates, it will cause budget problems. I am uncertain what to do. Current plan allows a 90% rebate of taxes for five years. Jessica asked, you say we need

MINUTES

Goodland City Commission

July 6, 2020

Page 2

to get word out, but do you think people use it? Rachelle stated, it seems like we get the same people using it. We need to determine how many applications to allow on a property. Some properties have multiple projects but the property has one value. The plan allows a ten day grace period to pay taxes late and still allow rebate. I have to pay my taxes on time and this causes problems with County Treasurer on distributions. This plan has a lot of paperwork. I feel should require appeals on property values at proper time, not when they pay taxes. If we give rebate but property owner wins appeal, we have to rely on them paying money back. The Attorney General says not to pay rebate until the appeal is settled, which causes additional problems holding the money. If the property owner is concerned about values, they should come in at the informal time, not formal time. If we pay property owner after an appeal, we have to pay interest and if it is a large value change, it will affect all entities. We have one of those outstanding now. Mayor Garcia asked, the most important point is if your projections are right should we renew plan for three years? Brad asked, should we handle this through the application process? Mayor Garcia stated, I believe the more clear we state requirements the better we will be. County Commissioner Blake stated, I agree if we know it is coming; it will affect the budget. Brad asked, should we limit applications to one per property instead of allowing them for each project to clean up the process and not kill the plan? I remember last time plan was renewed, it was hectic. County Commissioner Blake asked, do not have to leave rebate amount at 90%? Kevin Rasure citizen stated, I was on commission when original plan was approved and the economy was bad. It was for people making a new investment in community, but required taxes be paid by due date, no grace period, and rebate was scaled. I hope you look at it as a positive move to help community grow. It obviously needs revision. County Commissioner Enfield stated, the plan is for working people to be able to remodel, not just for new improvements to property. Kevin stated, originally the incentive was across the board, no matter investment cost to allow everyone to participate. County Chairman Topliff stated, the reason for plan is to encourage investment and economic development in community. Last time we renewed plan, the County Attorney indicated without the program we will be left in the dust. If we do away with plan we go backwards which will not help our community. Without growth we are finished and it scares me to go backwards. We need to decide if we are going to renew or not and need to do it soon. County Commissioner Enfield stated, I feel we should make changes to plan and submit to each entity for review. County Chairman Topliff stated, the ten day grace period came from a circumstance when a tax payer was out of town when taxes were due so they paid late and application got thrown out. County Commissioner Enfield stated, everyone gets tax statements the same time, they need to plan. Mayor Garcia stated, we need to get changes made to plan and distribute to each entity. Rachelle stated, before COVID it took three months to review so if we submit by September we should be alright. County Commissioner Blake stated, if anyone recommends changes, submit them to Rachelle, no one wants to see plan go away. Consensus was to make changes and have Rachelle distribute to each entity. Commissioner Howard stated, if someone builds on vacant property this is money we never received. Rachelle stated, the new Economic Development Director will be able to provide information to applicants. Rachelle stated, we eliminated the cap so still have incentives available for larger projects. I will make changes and email information to everyone.

**D. Board of Education Adjourns – Adjournment** of the Board of Education was had on a motion by Terry Smith **seconded by Stacy Price. Motion carried by unanimous vote at 5:40 p.m.**

**JOINT CITY-COUNTY MEETING**

**A. Economic Development-CVB-Chamber of Commerce Discussion** – Andrew stated, we received eleven applications for the Economic Development-CVB-Chamber of Commerce Board. Applicants are Stephen West, Jacque Livengood, Bill Biermann, Ben Schears, Janelle Miller, Carol McClure, Amy Sederstrom, Jessica Cole, Anthony Spomer, Jerry Fairbanks and Gennifer House. The intent is for the City and County Commission to each identify three board members who then appoint an additional member. Vice-Mayor Thompson stated, that is a good list of names, does the County have

MINUTES

Goodland City Commission

July 6, 2020

Page 3

any other names? County Commissioner Blake stated, we were opening up for anyone from Edson or Kanorado to apply if interested. The individuals expressing interest to us are Stephen West, Rachelle Standley, Anthony Spomer, Gennifer House, Jennifer Sanderson and Ben Schears. We have a good list to select from. After the City and County selection, the board can pick the last member from these lists if they choose. County Commissioner Blake stated, I nominate Rachelle Standley, County Commissioner Enfield seconded the nomination. Commissioner Brumbaugh stated, we have a good list of names. One thing that stood out to me while reviewing applicants is how much of an impact the schools have on the community. I feel it is important to have a representative from the school district or college. Mayor Garcia stated, I nominate Stephen West to the board. Consensus of the City Commission is to appoint Stephen West. County Commissioner Blake asked, do you see a conflict with Rachelle since she is employed by County? Rachelle stated, Economic Development Directors work closely with my office so I feel it is important to find someone that will work with my office. Consensus is to appoint Rachelle. County Commissioner Blake stated, I nominate Amy Sederstrom. Vice-Mayor Thompson stated I nominate Gennifer House. With her position on the Foundation I feel she is a good person to have on the Board. No concerns by City or County for the nomination of Amy as County representative and Gennifer as City representative. County Commissioner Enfield stated, the CVB board has done a lot of work. The board members would like representation on board to further their work. Jennifer Sanderson has asked to be on board and she has contacts with the State. County Commissioner Blake stated, my thoughts are we are starting a new venture, we start clean and get away from old ways and baggage it may bring. I am not saying there will be a problem, just want to start with a clean slate. County Commissioner Enfield stated, CVB brings a lot of money to the table and they feel they need follow-up on outstanding contracts. Vice-Mayor Thompson stated, I have no concern appointing Jennifer to the board. Commissioner Howard stated, I agree we need a clean slate. County Chairman Topliff stated, there are good points on both sides. City Commission feels we need new blood, if the six members appointed want to pick Jennifer as last board member they can. County Commissioner Enfield stated, vote is 2-1 so we will not appoint Jennifer to the board as a City or County representative. County Commissioner Blade stated, I nominate Ben Schears, County Chairman Topliff seconded the nomination. Commissioner Howard stated, I nominate Jacque Livengood as a City representative. Consensus of the City and County Commissions are to appoint the following representatives: City Representatives are Stephen West, Jacque Livengood and Gennifer House and County Representatives are Rachelle Standley, Ben Schears and Amy Sederstrom. County Chairman Topliff stated, these members can appoint the seventh board member. Vice-Mayor Thompson asked, what is the status on the bylaws? County Commissioner Enfield stated, I understood the city and county pick board members then the board writes the bylaws. Mayor Garcia stated, I understood we appoint board and the board runs the entities and works with the County Attorney. We are only involved if there is a conflict. I encourage the applicants not appointed to reach out to board on wishes to serve as final member. The simpler the bylaws, the better off the organization will be. When would be a good time to bring board members to the City and County Commissions for introductions? They will have to accept appointment. County Chairman Topliff stated, the sooner the board gets things started, the better we will be. Andrew stated, we will have to run parallel courses with the board so they can get started. They will need to meet with the City and County Attorney to structure the organization. If we create the 501 (c) 3 organization, it is a conflict for either Commission to oversee the board. If you want oversight on board it needs to be a department. The board can begin working on process. What is the county looking at to fund organization? The City is working on budget so we need to determine contribution amount from each side. Commissioner Brumbaugh stated, I assume the Welcome Center will house the individual which is a potential for some savings and would be ideal facility. County Commissioner Blake stated, we have not talked about it. Andrew stated, I will reach out to members appointed and let City and County Commissions know. County Chairman Topliff stated, the County has \$50,000 allocated for Economic Development

plus the CVB money. County Commissioner Enfield stated, there are provisions for CVB money. County Chairman Topliff stated, CVB money is being spent for salary now. I understand the director will be a county employee to help with benefits and withholding. County Chairman Enfield stated, it will be easier to determine once board sets bylaws. Mayor Garcia stated, I feel the board will be moving forward on process. I appreciate everyone's willingness to serve our community. Do we know the status on the Fire Department? County Commissioner Blake stated, every time we ask they say we are close. County Chairman Topliff stated, I believe everything is done except the information required if the City decides to opt out of the process. County attorney says it is hard to put the information on paper.

**B. 2<sup>nd</sup> and Kansas Road with Topside Manor** – Topside Manor Board Members Gennifer House and Kevin Rasure are present to discuss road. Kevin stated, I would like to thank the community for support to move forward with new facility. 2<sup>nd</sup> Street is very important to our building. Our concern is what determines drainage, the street or our building? We want to work together to get utilities right. County Commissioner Blake and Andrew have had conversation in putting in street and getting drainage correct. County Commissioner Blake stated, looking in short term, we want a nice entrance and exit with correct drainage on the 600 foot street. In the long term, the county wants to extend 2<sup>nd</sup> Street to Highway 27. Andrew stated, the City owns the right of way and land to west. Gennifer stated, we are referring to the land north of triangle. County Commissioner Blake stated, cost of road is \$280,000 or \$140,000 split between City and County. The County has money available. Mayor Garcia stated, I am in favor of supporting, we are going through budget now. Vice-Mayor Thompson asked, what is normal process to get street to building? Andrew stated, it depends on purpose of street. If it is a public street, it will be built to standard. We have done some road improvements, but if private road the cost is property owners. Vice-Mayor Thompson asked, was cost of road not part of project? Kevin stated, no but county is stepping forward to help with project. Commissioner Brumbaugh stated, the City needs to do their part. County Chairman Topliff stated, our intention is the county portion of road to Highway 27 will be without curb and gutter and at County cost. Commissioner Howard asked, will City staff be working on water and sewer lines? Andrew stated, City staff puts in the water and sewer lines then bills property owner. **ON A MOTION** by Commissioner Brumbaugh to approve the City contributing half the cost of the 600 foot road on 2<sup>nd</sup> Street **seconded** by Commissioner Farris. **MOTION carried on a VOTE of 5-0.** **ON A MOTION** by County Commissioner Blake to approve the County contributing half the cost of the 600 foot road on 2<sup>nd</sup> Street **seconded** by County Chairman Topliff. **MOTION carried on a VOTE of 3-0.** Topside Manor Board thanked the Commissions for their support.

**C. County Commission Adjourns – Adjournment** of the County Commission was had on a motion by County Commissioner Blake **seconded** by County Chairman Topliff. **Motion carried by unanimous vote at 6:17 p.m.**

#### CONSENT AGENDA

**A. 06/15/20 Commission Meeting Minutes**

**B. 06/22/20 Special Commission Meeting Minutes**

**C. Appropriation Ordinances: 2020-13, 2020-13A, and 2020-P13**

**ON A MOTION** by Commissioner Howard to approve Consent Agenda **seconded** by Commissioner Farris. **MOTION carried on a VOTE of 5-0.**

#### DISCUSSION

**A. FY 2021 Budget** - Mayor Garcia stated, the Commission and employees need to have a candid conversation pertaining budget. Andrew stated, the additional information requested by Commission has been provided along with a year to date budget comparison of main line items and a comparison for health insurance with a projected increase of 15% and 20%. Mayor Garcia stated, we appreciate



MINUTES

Goodland City Commission

July 6, 2020

Page 5

the employees and have had some dialog. Commission has to do a balancing act showing our appreciation for you that do the work we request and the 4,500 tax payers we have to listen too. There has been some creative thinking that will go into the discussion for tonight. I do not feel we will arrive at a decision tonight. Change is not easy but a constant in all our lives. I think the ultimatum and prerogative will be placed in employees hands. I will do what I need to do to rectify the circumstances. Commissioner Brumbaugh stated, health care costs have escalated, I have been reviewing curves on costs the last two years. I feel the costs are putting us behind with infrastructure improvements and other projects, which is very apparent this year because we are trying to take money from our employees to support the budget. I do not like to take money from our employees or projects. I am not in favor of the 4% employee contribution or the \$.48 per hour employee raise. The costs are exceeding what we can absorb. We are lax in pay, especially starting pay. I feel all wages need to be bolstered. The plan we are trying to support is hurting our employee's wages. It is unsustainable to keep plan. My goal in thinking through this is to find answers. We are out of line with our benefit versus wage structure. We are way high on benefits and have to flip it to sustain. I feel employees taking single policies are taking the biggest hit and have less benefit where we try to fund the employee-child, employee-spouse or family plan. I feel everyone gets \$12,000 to \$13000 in benefits with difference of wage increase. We have about twenty five employees on family plan, some have spouses that have other options. Spouses need to take the insurance plan from their employer when they can. By requiring this we can give back in wages. I see \$7,000 difference between each plan and not having a family plan saves \$175,000. If we offer single plans with no out of pocket costs we will save money. I have two ideas. The first is everyone gets same benefit with a two year plan to get where we need to be. The other alternative you recommended is giving raise equal to the cost of insurance contribution which I do not like. I feel we need to advocate raise for employee loyalty. We can start with \$1.00 per hour raise for everyone and bolster entry level pay. Then in year two the family plan will not be budgeted anymore and provide \$1.50 per hour increase. If we go down to a single plan we will be saving money and will have additional money for taxes and KPERs. The first year with a family plan you will still get the \$1.00 per hour raise but a single plan employee will get \$1.00 per hour plus \$1.50 per hour raise one time which increases entry level wages. It has hurt us in past years to fund plan and not wages. By increasing wages it makes us more competitive. In year two we get rid of other plans with same pay raises. My goal in two years is with generous raises to offer a single plan paid by the City but employee has wage increase to help pay for additional benefit. I am considering two year path to be competitive and reward employees. Commissioner Farris stated, we have to do something, I am not happy with individual we have handling our insurance. We need to get bids and see what is out there. We all have to pay for insurance. Mayor Garcia stated, one of my proposals resembles plan offered by Colby. I would be willing to have Andrew get itemization of what every employee in Colby is making with their plan. I would be willing to sacrifice and compensate raises in one lump sum. They pay 70% for employee then you pay for children and spouse. However, I will compromise that in first year with the City paying 75% to be under Colby, but employee pays for spouse and children. I feel that would compensate wages a lot. Change is here and it is not going away. By putting off decision in two years insurance costs will accelerate and be more costly to employee and City. Commissioner Howard stated, insurance is a hard subject and it is difficult if you do not have it. Making employees with families go without insurance is hard. I propose we offer same benefit for one more year and when time to renew get higher deductibles to review which would be cheaper. I feel we need to give employees a raise of \$1.00 per hour. We are lost right now not knowing what cost of insurance will be but employees are important to the City. Commissioner Brumbaugh asked, if we make any changes to current plan do we lose grandfather status? Andrew stated, we remain grandfathered as long as the employer change is not larger than 5%. Commissioner Howard stated, we need to look at a higher deductible, the premium would cost less. Commissioner Brumbaugh stated, I agree with you but with current plan we would lose grandfather

MINUTES

Goodland City Commission

July 6, 2020

Page 6

status. Andrew stated, the 4% proposed employee contribution keeps grandfather status in place. Commissioner Brumbaugh stated, I would like to see more options on insurance. Mayor Garcia asked, if your employees are valuable would you not want to give them the best plan possible? If you step outside the 5%, you lose grandfather status and the only way to make it work is to increase the deductible. Commissioner Howard stated, if we are looking at a higher deductible we can give the employees the wage increase they deserve. I would like it to stay as is without a cost sharing plan and possibly using a non-grandfathered plan. We need to look at all plans, grandfathered and non-grandfathered. Andrew stated, during renewal we looked at a non-grandfathered plan without a large savings. Your deductible will change with non-grandfathered plan. The grandfathered plan saved us money because of prescription coverage. Vice-Mayor Thompson stated, I am of the same mindset as Commissioner Howard. I feel employees should think about it. I like keeping the plan as is for one year which will affect their raise this year. We can look at Commissioner Brumbaugh's options to cut insurance but provide a significant increase in wages. The Commission is obviously not in agreement trying to equal wages and insurance. We just approved \$140,000 road project without much conversation but yet having an extended discussion on this topic. Mayor Garcia stated, I have no problem with plan presented by Commissioner Brumbaugh but feel mine is generous. Chris Douglas employee stated, Kenton Keith, Terry Smith and myself met with each Commissioner. We do not get a seat at the table and you are making tough decisions. There is not a simple solution. We are thankful for the dialog and being able to communicate. We do not have to agree but meeting with the Commission has helped me understand how hard the solution is. We have to be able to communicate. The biggest question is how we do it and we want to help work through it. I work with some wonderful people and feel we need to partner together as we are the hands and feet of the City in getting work done. I feel you recognize we all want what is best for the City, but not able to do without the hands and feet of City. Mayor Garcia stated, you are on target, the mission has to be communicated and work for the City. We need to crunch numbers and get back together again. Our next meeting is scheduled for July 20<sup>th</sup>. Andrew stated, we have to have public hearing no later than August 15<sup>th</sup>. In order to approve budget at August 3<sup>rd</sup> meeting, we will have to have finalized by 20<sup>th</sup> for publication. You can have special meetings for more discussion if needed. Commissioner Brumbaugh stated, over the last couple years it seems like one size fits all but I would like to offer employees options going forward with different plans. Andrew stated, I agree with Commissioner Brumbaugh, one of the biggest criticisms is grandfathered plan limits options. In our discussions, staff is aware we may lose grandfather status. It is frustrating as we are letting budget drive policy instead of policy drive budget. Determining the best insurance policy is a process. If you want to restructure, staff is not opposed to options, it is just tough to determine them in one night. The budget has 4% employee contribution and I feel it is a mistake changing the insurance policy as part of budget process. I caution the Commission from making quick drastic decisions without thinking them through. Changes will have to come but they have to be planned. Mayor Garcia stated, I agree with what you are saying and was sensitive when the employees were talking to me. When we do not make a decision we make it worse. The Commission has to make a decision before provide options. I went back and reviewed figures and with fifty one employees in 2020 budget the cost was \$757,634 but in 2021 budget, insurance cost is \$748,000. Commissioner Brumbaugh stated, I understand we cut three and half positions, where did money get displaced. Andrew stated, the valuation increased \$50,000 if we hold mill levy, but additional requests of equipment and improvements not previously funded were presented. One position cut was split between water utility and general fund, then when cut lower end positions there is not as much of an impact on budget. Commissioner Brumbaugh stated, I feel if other employees are stepping up to fill Rich's position, there should be compensation built in for new responsibilities. Andrew stated, we do have additional build in there and in past we have typically budgeted a 15% increase for insurance but during renewal Commission discussed extending date to July 1 so budgeted a 20% increase. Is that important to the Commission? Vice-Mayor Thompson

## MINUTES

Goodland City Commission

July 6, 2020

Page 7

asked, last year you budgeted 15% increase, but it was 11% what happened to the 4%? Andrew stated, the City is self-insured, so we pay claims up to \$30,000 cap. When we do not use entire 15% it remains in the fund. City was previously self-insured and had balance built up but when no longer self-insured the Commission used money in other funds so need to build balance again. Once we build balance, we will have leeway. The balance we would like to have is \$500,000. Mayor Garcia stated, my recommendation is leave renewal at March 1 which still gives us an allotted amount of time to make decisions. We have more to deal with in budget season then to take on burden to discuss insurance. Commissioner Brumbaugh stated, I am still frustrated BCBS is dictating to us and we cannot know numbers up front. I do not want to spring anything on anyone either. I want people to have time to adjust their budgets but we do not have numbers to discuss at this time. Andrew stated, it is Commission decision, this may not be year to do it. Depends what Commission is prioritizing. Commissioner Brumbaugh stated, we need to come up with number to fund, then come up with plan and fund it. Commissioner Howard asked, the 20 % is for a longer contract? Andrew stated, yes we looked at it last year but numbers did not work. Vice-Mayor Thompson stated, if we expand our quotes and providers, I feel we can stay with twelve month contract. Commissioner Howard asked, if we decrease to twelve month we would budget 15% increase? Commissioner Brumbaugh stated, previous hospital CEO tried to consolidate local entities for a bigger group renewal, is this an option this year, maybe with other City's? Commissioner Howard stated, school does that with other school districts. Andrew stated, that is something we want to work toward. There was one bid like that last year and I believe it came in really high but feel loosening up some. Commissioner Brumbaugh stated, the employee concern is to have a plan with notice instead of it being on the chopping block every year. We need to respect employee opinions and understand what they are saying. Consensus of Commission is reduce increase estimate for insurance to 15%.

Mayor Garcia asked, do Commissioners have other budget questions? Commissioner Howard asked, on the phone bills who determines what is paid by each department. Joshua stated, it is the number of lines and cost of cable and equipment leased at each location. Commissioner Howard stated, IT equipment is budgeted in every dept. Joshua stated, that is for other network equipment, not leased equipment. Commissioner Howard asked, I have heard we are best place to buy used electrical equipment, can we stretch those dollars out? They have a lot of hours not miles on the equipment. Vice-Mayor Thompson asked, how is decision made to rotate equipment? Dustin stated, when I started it was a seven year rotation, I moved it to a ten year rotation. We had a near death experience and we look at the safety factor of the boom and equipment. Commissioner Howard stated, equipment could have a failure two years into the equipment. Tyler Jones employee stated, that is not the safest either. Commissioner Howard stated, you should run safety checks everyday on equipment. Tyler stated, we do. Dakota Roubideaux employee asked, when the power is out do you want to wait to get it back on? Dustin stated, we have tried to stretch service, but when looking at thirteen years on a truck it is stretching it too far. I feel using an electric boom in the air with 13.8 voltage, we want to make sure we have safe equipment. With thirty years of experience, it is not about the hours but the safety. Commissioner Howard stated, it is with all departments. Mayor Garcia stated, we had questions with freezing positions during this time. Danny and Dustin are both understaffed but we have eluded to freezing positions during COVID. Commissioner Brumbaugh asked, what makes it difficult to hire an electric employee? Dustin stated, wages are an issue, but have to have experience and fit with crew. We have a good crew and I do not want to hire someone we feel would not fit. Power plant and line crew are both electric, but they are two different beasts. We tried to cross train in past but it does not work. Starting wage is \$15 unless have schooling and experience, then it is \$16. Mayor Garcia stated, I feel that needs to be increased to almost \$16. Dustin stated, we have started apprentice program to get additional training the guys get paid for to keep them here. Commissioner Brumbaugh stated, I feel if we move forward and make change the new person needs to be brought in

MINUTES

Goodland City Commission

July 6, 2020

Page 8

under new plan with higher wage, not sure right. Andrew stated, that is why changing benefits needs to be a process. Commissioner Howard asked, so do you table new hires till we get plan in place. Mayor Garcia stated, at one time we eluded we were hiring a new police officer but we eluded to freeze position. Commissioner Brumbaugh asked, what is the difference in police and other positions we have advertised? Vice-Mayor Thompson stated, I cannot think of a reason to freeze hiring when we have position available. Commissioner Farris stated, putting a freeze on hiring has never stopped them from hiring before. Commissioner Howard stated, we have good police officers, then we have mediocre officers that have promoted a bad image around town. You get hit up by citizens every day about those employees, then we have something happen at interstate and all law enforcement agencies report to the scene. Is it necessary? John Windle employee stated, the agencies all help each other, in this instance it was necessary. Jason Erhart employee stated, last year Mayor Garcia said he did not want an officer working night shift alone. I have had an officer work alone three nights with three felonies. We have six officers, then one at academy and one opening. If you have an officer hurt it makes it difficult to respond. Mayor Garcia asked, you have two officers on duty at night until 2:00 a.m., then you have one officer? Jason stated, yes that is a swing shift, after 2:00 a.m. the officer is still on call. It is difficult for the chief to do her work then work night shift also, but she does. I do not take vacation because I do not want to leave my officers alone. Where do we stop, safety or hiring freeze? Mayor Garcia stated, we are not a stagnant community but when agriculture land value goes down it will affect the budget. Joni stated, we have one officer work during day with me, then I also come out at night when needed. Mayor Garcia stated, I am trying to figure out why revised figures do not work with budget. Andrew stated, we build each year on its own, there is a difference between approved budget and administration of budget. When get unexpected events in a year you revise budget accordingly, COVID is an example. We are weathering it well, so 2021 budget is based on what we see. We make changes to budget every day. The cuts we made were to function during COVID, but when we went to split shift we were not functioning, we were trying to stay afloat. Budget is a daily conversation and a complicated process. We have to determine what to cut and what want to accomplish. Commissioner Howard stated, I feel P & L looks decent. Mayor Garcia asked, what does final budget end up? Andrew stated, \$14,600,000 budget. Does the Commission want to schedule another workshop or do you feel you will have resolution at next meeting. Vice-Mayor Thompson stated, I do not know if we will have resolution but if we need to schedule a meeting after the 20<sup>th</sup> we can. Commissioner Howard asked, if we pay 100% on insurance, what does Commission want to do for raises? They deserve a raise. Commissioner Brumbaugh stated, I am sticking with my original option; I will not be in favor of a family plan this year, but want to boost wages. Vice-Mayor Thompson asked, do you do flat increase or a percent? I am unsure until we revise numbers, but raises are justified. Mayor Garcia stated, another proposal that would not affect employees whose spouse is stay at home is require 10% employee contribution first year. We could increase deductible. If you have spouse with insurance offered it would be the employee's advantage to take alternate insurance. I am in favor of lowering insurance premium. Commissioner Brumbaugh stated, by becoming non-grandfathered it allows more options. Mayor Garcia thanked everyone for candid discussion and stated, we will meet on July 20<sup>th</sup>. It is all hypothetical until we get renewal numbers but we have to make decision for the sake of the employee. We cannot keep putting off decision.

**REPORTS**

- A. City Manager - 1.** Sporer poured in front of 24/7 last week. **2.** We will have rezoning hearing on the 20<sup>th</sup>. **3.** Auditor will be at the August 3<sup>rd</sup> meeting to present report. **4.** We successfully replaced the media at treatment plant on June 30<sup>th</sup> with help from Scott City Water Department. **5.** To update Commission, July 4<sup>th</sup> we had thirty five citizen complaints between July 1 and July 5, but no citations issued. Commissioner Howard asked, do we need to do something for Scott City for help since it was

on their dime? Rich stated, we do that between municipalities, but Andrew and I are going to discuss what to do.

**B. Commissioners**

**Vice-Mayor Thompson – 1. NR**

**Commissioner Brumbaugh – 1. NR**

**Commissioner Howard - 1.** Thank all employees for what you do. If you were not here we would not be here. That goes to all departments.

**Commissioner Farris – 1.** Agree with Commissioner Howard.

**C. Mayor – 1. NR**

**ADJOURNMENT WAS HAD ON A MOTION** Commissioner Brumbaugh **seconded** by Vice-Mayor Thompson. **Motion carried by unanimous VOTE, meeting adjourned at 8:20 p.m. Next meeting is scheduled for July 20, 2020.**

**ATTEST:**

\_\_\_\_\_  
**John Garcia, Mayor**

\_\_\_\_\_  
**Mary P. Volk, City Clerk**

INVOICE NO	LN	DATE	PO NO	REFERENCE	TRACK		1099	NET	CHECK	PD DATE
					CD	GL ACCOUNT				
-----										
3784 AMAZON CAPITAL SERVICES										
1J6P-XYCT-QHNF	1	7/11/20		IPAD CASE		21-42-3120		27.98	62114	7/20/20
1KWF-3DQ9-FF71	1	7/05/20		5 GOODLAND MOVIES		11-21-4010		49.95	62114	7/20/20
1MJW-G7NY-PWPV	1	7/03/20		POOL CLEANER		11-25-3120		50.88	62114	7/20/20
1XHV-DXFH-YDLJ	1	6/16/20		CALCIUM BUFFER		11-25-3120		26.94	62114	7/20/20
								-----		
AMAZON CAPITAL SERVICES								155.75		
2871 AMERICAN FAMILY LIFE										
PR20200703	1	7/03/20		AFLAC CANCER		11-00-0012	N	120.93	3045127	7/10/20 E
PR20200703	2	7/03/20		AFLAC CANCER		15-00-0012	N	49.53	3045127	7/10/20 E
PR20200703	3	7/03/20		AFLAC ACCIDENT		11-00-0012	N	98.70	3045127	7/10/20 E
PR20200703	4	7/03/20		AFLAC ACCIDENT		15-00-0012	N	77.58	3045127	7/10/20 E
PR20200703	5	7/03/20		AFLAC ACCIDENT		23-00-0012	N	14.28	3045127	7/10/20 E
PR20200703	6	7/03/20		AFLAC ST DISB		11-00-0012	N	45.36	3045127	7/10/20 E
PR20200703	7	7/03/20		AFLAC ST DISB		15-00-0012	N	82.92	3045127	7/10/20 E
PR20200703	8	7/03/20		AFLAC ST DISB		23-00-0012	N	17.82	3045127	7/10/20 E
PR20200703	9	7/03/20		AFLAC LIFE RIDR		15-00-0012	N	2.76	3045127	7/10/20 E
PR20200703	10	7/03/20		AFLAC LIFE		11-00-0012	N	32.51	3045127	7/10/20 E
PR20200703	11	7/03/20		SPEC HLTH EVENT		11-00-0012	N	20.10	3045127	7/10/20 E
PR20200703	12	7/03/20		AFLAC HOSP CONF		11-00-0012	N	43.44	3045127	7/10/20 E
PR20200703	13	7/03/20		AFLAC HOSP CONF		21-00-0012	N	26.28	3045127	7/10/20 E
								-----		
AMERICAN FAMILY LIFE								632.21		
1389 AMERICAN FID										
PR20200703	1	7/03/20		AF CANCER AT		11-00-0012	N	27.18	3045124	7/10/20 E
PR20200703	2	7/03/20		AF CANCER AT		15-00-0012	N	23.45	3045124	7/10/20 E
PR20200703	3	7/03/20		AF CANCER AT		21-00-0012	N	11.17	3045124	7/10/20 E
PR20200703	4	7/03/20		AMER FID CANCER		11-00-0012	N	229.12	3045124	7/10/20 E
PR20200703	5	7/03/20		AMER FID CANCER		15-00-0012	N	160.65	3045124	7/10/20 E
PR20200703	6	7/03/20		AMER FID CANCER		21-00-0012	N	36.02	3045124	7/10/20 E
PR20200703	7	7/03/20		AMER FID LIFE		11-00-0012	N	152.16	3045124	7/10/20 E
PR20200703	8	7/03/20		AMER FID LIFE		15-00-0012	N	350.53	3045124	7/10/20 E
PR20200703	9	7/03/20		AMER FID LIFE		21-00-0012	N	110.88	3045124	7/10/20 E
PR20200703	10	7/03/20		AMER FID LIFE		23-00-0012	N	80.25	3045124	7/10/20 E
PR20200703	11	7/03/20		AM FID ACCIDENT		11-00-0012	N	82.75	3045124	7/10/20 E
PR20200703	12	7/03/20		AM FID ACCIDENT		15-00-0012	N	103.05	3045124	7/10/20 E
PR20200703	13	7/03/20		AM FID ACCIDENT		21-00-0012	N	19.95	3045124	7/10/20 E
PR20200703	14	7/03/20		AM FID HOSPITAL		15-00-0012	N	26.99	3045124	7/10/20 E
PR20200703	15	7/03/20		AM FID HOSPITAL		21-00-0012	N	15.93	3045124	7/10/20 E
PR20200703	16	7/03/20		AM FD DISABILTY		11-00-0012	N	67.84	3045124	7/10/20 E
PR20200703	17	7/03/20		AM FD DISABILTY		15-00-0012	N	18.36	3045124	7/10/20 E
PR20200703	18	7/03/20		AF CRITICAL CR		11-00-0012	N	16.59	3045124	7/10/20 E
PR20200703	19	7/03/20		AF CRITICAL CR		15-00-0012	N	9.74	3045124	7/10/20 E
								-----		
AMERICAN FID								1542.61		
1390 AMERICAN FIDELITY										
PR20200703	1	7/03/20		AF MED REIMBURS		11-00-0012	N	391.25	3045125	7/10/20 E
PR20200703	2	7/03/20		AF MED REIMBURS		15-00-0012	N	219.17	3045125	7/10/20 E
PR20200703	3	7/03/20		AF MED REIMBURS		21-00-0012	N	85.00	3045125	7/10/20 E
PR20200703	4	7/03/20		AF MED REIMBURS		23-00-0012	N	25.00	3045125	7/10/20 E
								-----		

INVOICE NO	LN	DATE	PO NO	REFERENCE	TRACK		1099	NET	CHECK	PD DATE
					CD	GL ACCOUNT				
				AMERICAN FIDELITY				720.42		
				561 BANKWEST						
GEN20-249	1	7/20/20		WELCOME CENTER P/O		38-01-4010		44495.51	62115	7/20/20
				BANKWEST				44495.51		
				2756 BEDORE, BARB						
GEN20-256	1	7/03/20		CHEST FREEZER		11-23-3060		200.00	62116	7/20/20
				BEDORE, BARB				200.00		
				374 BLACK HILLS ENERGY						
GEN20-241	1	7/06/20		WELCOME CENTER GAS		11-21-2100		32.17	62109	7/13/20
GEN20-242	1	7/02/20		FIRE HOUSE AIRPORT GAS		11-07-2100		32.01	62109	7/13/20
GEN20-242	2	7/02/20		AIRPORT GAS SERVICE		11-13-2100		65.54	62109	7/13/20
GEN20-242	3	7/02/20		PARKS GAS SERVICE		11-15-2100		38.40	62109	7/13/20
GEN20-243	1	7/06/20		NORTH SHOP GAS SERVICE		11-11-2100		31.65	62109	7/13/20
GEN20-244	1	7/06/20		CITY SHOP GAS SERVICE		21-42-2100		86.60	62109	7/13/20
GEN20-245	1	7/06/20		POWER PLANT GAS SERVICE		15-40-2100		34.50	62109	7/13/20
GEN20-246	1	7/06/20		MUSEUM GAS SERVICE		11-17-2100		32.17	62109	7/13/20
GEN20-247	1	7/01/20		FAA GAS SERVICE		11-13-2100		31.50	62109	7/13/20
GEN20-250	1	7/10/20		CITY OFFICE GAS SERVICE		15-44-2100		44.66	62117	7/20/20
GEN20-250	2	7/10/20		CITY OFFICE GAS SERVICE		21-40-2100		44.66	62117	7/20/20
GEN20-251	1	7/10/20		ART CENTER GAS SERVICE		11-02-2100		34.65	62117	7/20/20
GEN20-252	1	7/10/20		WOLAK BUILDING GAS SERVICE		11-07-2100		50.27	62117	7/20/20
GEN20-253	1	7/10/20		GAS SERVICE WATER TREATMENT		21-40-2100		42.70	62117	7/20/20
				BLACK HILLS ENERGY				601.48		
				71 BLUE CROSS - BLUE SHIELD						
PR20200703	1	7/03/20		BCBS S300/SHIP		11-00-0012	N	24.49	3045120	7/10/20 E
PR20200703	2	7/03/20		BCBS S300/SHIP		15-00-0012	N	22.79	3045120	7/10/20 E
				BLUE CROSS - BLUE SHIELD				47.28		
				2651 BRIDGEWELL RESOURCES LLC						
243578301	1	7/06/20	18867	35' CLASS 2 POLES X 39		15-42-3050		14043.18	62118	7/20/20
				BRIDGEWELL RESOURCES LLC				14043.18		
				3808 CIRCLE K STORES						
GEN20-255	1	7/13/20		REIMB OVERPAY FINAL BILL		15-44-3180		250.00	62119	7/20/20
				CIRCLE K STORES				250.00		
				552 CITY ATTORNEYS ASSOC. OF						
2574	1	5/07/20		CAAK VIRTUAL SPRING MEETING		11-04-2210		30.00	62120	7/20/20
				CITY ATTORNEYS ASSOC. OF				30.00		
				519 CITY OF GOODLAN						
PR20200703	1	7/03/20		TECHNOLOGY		11-00-0012	N	7.50	3045121	7/10/20 E
PR20200703	2	7/03/20		TECHNOLOGY		15-00-0012	N	15.00	3045121	7/10/20 E

INVOICE NO	LN	DATE	PO NO	REFERENCE	TRACK		1099	NET	CHECK	PD DATE
					CD	GL ACCOUNT				
-----										
				519 CITY OF GOODLAN						
PR20200703	3	7/03/20		TECHNOLOGY		21-00-0012	N	7.50	3045121	7/10/20 E
				CITY OF GOODLAN				30.00		
-----										
				674 CITY OF GOODLAND, CASHIER						
GEN20-277	1	7/20/20		SALVAGE TITLE-REFUND		25-00-0347		20.00	62121	7/20/20
GEN20-277	2	7/20/20		AIRPORT EASEMENT RECORDING		11-13-2140		144.00	62121	7/20/20
GEN20-277	3	7/20/20		POOL START UP CASH		11-00-0460		100.00	62121	7/20/20
GEN20-277	4	7/20/20		WINDLE GAS		11-03-3070		23.12	62121	7/20/20
GEN20-277	5	7/20/20		DAN MASON LUNCH		15-40-2190		11.78	62121	7/20/20
GEN20-277	6	7/20/20		J SHOWALTER FUEL		11-03-3070		15.05	62121	7/20/20
GEN20-277	7	7/20/20		VEHICHL E TAGS-PD		11-03-3120		10.00	62121	7/20/20
GEN20-277	8	7/20/20		DRAWER 1/14/20		15-44-3180		10.00	62121	7/20/20
GEN20-277	9	7/20/20		NSF ERROR ON ACH		15-44-3180		35.00	62121	7/20/20
GEN20-277	10	7/20/20		THORNBURG GAS REIMBURSE		21-40-2190		20.05	62121	7/20/20
GEN20-277	11	7/20/20		CLOROX WIPES-S SCHEOPNER		15-44-3120		17.30	62121	7/20/20
GEN20-277	12	7/20/20		MUV INSPECTION X 3		11-11-3120		75.00	62121	7/20/20
				CITY OF GOODLAND, CASHIER				481.30		
-----										
				515 CITY OF GOODLAND, WATER/GE						
GEN20-257	1	7/01/20		S&A DIESEL		11-11-3070		516.10	62123	7/20/20
GEN20-257	2	7/01/20		WATER DIST DIESEL		21-42-3070		128.40	62123	7/20/20
GEN20-257	3	7/01/20		PARKS DEPT DIESEL		11-15-3070		100.60	62123	7/20/20
GEN20-257	4	7/01/20		FIRE DEPT DIESEL		11-07-3070		27.20	62123	7/20/20
GEN20-257	5	7/01/20		ELEC DIST DIESEL		15-42-3070		359.50	62123	7/20/20
GEN20-257	6	7/01/20		REC DEPT DIESEL		11-23-3070		15.40	62123	7/20/20
GEN20-257	7	7/01/20		S&A DEPT GAS		11-11-3070		303.30	62123	7/20/20
GEN20-257	8	7/01/20		SEWER DEPT GAS		23-41-3070		53.80	62123	7/20/20
GEN20-257	9	7/01/20		WATER DEPT GAS		21-42-3070		44.40	62123	7/20/20
GEN20-257	10	7/01/20		WATER PROD GAS		21-40-3070		192.20	62123	7/20/20
GEN20-257	11	7/01/20		PARKS DEPT GAS		11-15-3070		153.80	62123	7/20/20
GEN20-257	12	7/01/20		FIRE DEPT GAS		11-07-3070		72.80	62123	7/20/20
GEN20-257	13	7/01/20		ELEC PROD GAS		15-40-3070		123.40	62123	7/20/20
GEN20-257	14	7/01/20		ELEC DIST GAS		15-42-3070		20.20	62123	7/20/20
GEN20-257	15	7/01/20		RECREATION GAS		11-23-3070		51.70	62123	7/20/20
GEN20-257	16	7/01/20		CITY OFFICE GAS		15-44-3070		24.40	62123	7/20/20
GEN20-257	17	7/01/20		CITY MANAGER GAS		11-02-3070		27.10	62123	7/20/20
GEN20-257	18	7/01/20		POLICE DEPT GAS		11-03-3070		700.60	62123	7/20/20
				CITY OF GOODLAND, WATER/GE				2914.90		
-----										
				942 CPS DISTRIBUTORS						
03559678-001	1	6/22/20	18937	RAINBIRD FALCON 6504 SPRINKLER		11-23-3120		229.52	62124	7/20/20
03559678-001	2	6/22/20	18937	SPRINKLER NOZZLES ADJ SPRINKLE		11-15-3120		482.62	62124	7/20/20
				CPS DISTRIBUTORS				712.14		
-----										
				3720 DCF-LIEAP						
GEN20-275	1	7/01/20		CHELSEY SALAZAR REIMBURSE		15-44-3180		363.60	62125	7/20/20
				DCF-LIEAP				363.60		



INVOICE NO	LN	DATE	PO NO	REFERENCE	TRACK		1099	NET	CHECK	PD DATE
					CD	GL ACCOUNT				
-----										
				1867 DEMARS PENSION CONSULTING						
0730413	1	7/06/20		FIXED PARTICIPANT FEE		11-02-2140		75.00	62126	7/20/20
				DEMARS PENSION CONSULTING				75.00		
-----										
				2272 DON'S ELECTRIC & REWIND I						
10487	1	6/29/20		1.5RPM 1725/1425 FRAME MARATHO		23-41-3060		441.70	62127	7/20/20
				DON'S ELECTRIC & REWIND I				441.70		
-----										
				2254 EAGLE COMMUNICATIONS						
GEN20-276	1	6/30/20		TELEPHONE/INTERNET		15-44-2180		742.30	62128	7/20/20
GEN20-276	2	6/30/20		TELEPHONE/INTERNET		11-06-2180		53.78	62128	7/20/20
GEN20-276	3	6/30/20		TELEPHONE/INTERNET		11-04-2180		53.78	62128	7/20/20
GEN20-276	4	6/30/20		TELEPHONE/INTERNET		21-40-2180		364.57	62128	7/20/20
GEN20-276	5	6/30/20		TELEPHONE/INTERNET		23-41-2180		63.78	62128	7/20/20
GEN20-276	6	6/30/20		TELEPHONE/INTERNET		11-03-2180		548.43	62128	7/20/20
GEN20-276	7	6/30/20		TELEPHONE/INTERNET		11-02-2180		160.71	62128	7/20/20
GEN20-276	8	6/30/20		TELEPHONE/INTERNET		11-25-2180		160.71	62128	7/20/20
GEN20-276	9	6/30/20		TELEPHONE/INTERNET		11-21-2180		53.78	62128	7/20/20
GEN20-276	10	6/30/20		TELEPHONE/INTERNET		11-07-2180		150.71	62128	7/20/20
GEN20-276	11	6/30/20		TELEPHONE/INTERNET		11-09-2180		53.78	62128	7/20/20
				EAGLE COMMUNICATIONS				2406.33		
-----										
				3800 EMC INSURANCE COMPANIES						
L-06901959	1	7/20/20		PREMIUM		21-40-2060		388.62	62129	7/20/20
L-06901959	2	7/20/20		PREMIUM		21-42-2060		388.62	62129	7/20/20
L-06901959	3	7/20/20		PREMIUM		23-41-2060		388.62	62129	7/20/20
L-06901959	4	7/20/20		PREMIUM		23-41-2060		388.62	62129	7/20/20
L-06901959	5	7/20/20		PREMIUM		15-40-2060		5246.37	62129	7/20/20
L-06901959	6	7/20/20		PREMIUM		15-42-2060		5246.37	62129	7/20/20
L-06901959	7	7/20/20		PREMIUM		15-44-2060		777.24	62129	7/20/20
L-06901959	8	7/20/20		PREMIUM		11-02-2060		6606.54	62129	7/20/20
				EMC INSURANCE COMPANIES				19431.00		
-----										
				517 EVANS, BIERLY, HUTCHISON &						
12605	1	6/30/20		PROJECT R3272.1 GLD STR 2017		04-01-2140	M	10446.80	62130	7/20/20
12606	1	6/30/20		PROJECT R3431.1		36-01-4010	M	572.00	62130	7/20/20
				EVANS, BIERLY, HUTCHISON &				11018.80		
-----										
				211 FARM PLAN						
010219	1	5/28/20		GLOVE LINED GRIPPING		11-11-2310		3.99	62131	7/20/20
010991	1	6/01/20		GLOVES		15-42-2310		89.33	62131	7/20/20
011454	1	6/03/20		SPRAY PAINT X 5		11-07-3120		19.95	62131	7/20/20
011547	1	6/04/20	17444	HOSE/FUNNEL/10W30 QT OIL		23-41-3120		82.94	62131	7/20/20
012297	1	6/08/20		SPRAY PAINT X 4		11-07-3120		19.96	62131	7/20/20
012555	1	6/09/20	18933	WORK GLOVES		11-15-3120		27.98	62131	7/20/20
012985	1	6/12/20	18934	MANIFOLD REPLACEMENT RANGER		11-15-3060		24.99	62131	7/20/20
013032	1	6/12/20		GLOVES		11-11-3120		16.99	62131	7/20/20
013895	1	6/17/20		84 PACKS WATER		11-07-3120		251.16	62131	7/20/20
024453	1	6/22/20	19039	FOOD-BLADE		11-03-3250		47.99	62131	7/20/20

INVOICE NO	LN	DATE	PO NO	REFERENCE	TRACK		1099	NET	CHECK	PD DATE
					CD	GL ACCOUNT				
-----										
211 FARM PLAN										
								585.28		
-----										
FARM PLAN										
-----										
205 FRONTIER AG										
091510	1	5/26/20		TIRE REPAIR #30	11-11-3060		52.50	62133	7/20/20	
091527	1	5/27/20	19014	2 TIRE REPAIRS UNIT 5	11-03-3170		37.80	62133	7/20/20	
091835	1	6/11/20	19021	TIRES UNIT 5	11-03-3170		664.36	62133	7/20/20	
091969	1	6/17/20	19034	TIRES UNIT #8	11-03-3170		564.96	62133	7/20/20	
092082	1	6/22/20	18938	TRAILER TIRE PARKS DEPT	11-15-3060		108.74	62133	7/20/20	
157251	1	6/04/20		BULK DIESEL SEWER	23-41-3070		355.50	62133	7/20/20	
2743	1	6/03/20		SHIPPING	21-40-3130		13.73	62133	7/20/20	
2744	1	6/03/20		SHIPPING	21-40-3130		17.15	62133	7/20/20	
2807	1	6/22/20		UPS POSTAGE	21-40-3130		9.19	62133	7/20/20	
2811	1	6/08/20		UPS POSTAGE	21-40-3130		11.14	62133	7/20/20	
2812	1	6/09/20		UPS POSTAGE	21-40-3130		10.51	62133	7/20/20	
2813	1	6/08/20		UPS POSTAGE	21-40-3130		14.59	62133	7/20/20	
2831	1	6/16/20		UPS SHIPPING	21-40-3130		9.19	62133	7/20/20	
2833	1	6/17/20		UPS SHIPPING	21-40-3130		10.97	62133	7/20/20	
2849	1	6/24/20		UPS SHIPPING	21-40-3130		11.65	62133	7/20/20	
811893	1	6/05/20		PROPANE FORKLIFT	15-40-3070		30.52	62133	7/20/20	
814563	1	6/16/20	18847	55 GAL MAXTRON 5W-30	11-03-3170		713.90	62133	7/20/20	
								2636.40		
-----										
FRONTIER AG										
-----										
3721 GOODLAND AUTOMOTIVE LLC										
288590	1	6/01/20		MOTORCRAFT ORANGE ANTIFRZ #49	15-42-3060		23.42	62134	7/20/20	
337801	1	6/01/20		GOLD ANTFRZ #49	15-42-3060		1.90-	62134	7/20/20	
338148	1	6/09/20	18838	BATTERY/OIL&AIR FILTER	11-11-3170		132.50	62134	7/20/20	
								154.02		
-----										
GOODLAND AUTOMOTIVE LLC										
-----										
3272 GOODLAND ROTARY CLUB										
1710	1	1/01/20	19041	ANNUAL DUES	11-03-2080		115.25	62135	7/20/20	
								115.25		
-----										
GOODLAND ROTARY CLUB										
-----										
206 GOODLAND STAR-NEWS										
457502	1	6/02/20		VAN ADVERTISEMENT	11-06-2130		42.90	62137	7/20/20	
457518	1	6/05/20		POOL OPEN AD	11-25-2130		61.50	62137	7/20/20	
457519	1	6/05/20		ECONOMIC DEVELOPMENT AD	11-21-2130		24.60	62137	7/20/20	
458004	1	6/19/20		POLICE OFFICE HELP WANTED	11-03-2130		163.20	62137	7/20/20	
458005	1	6/19/20		PARKS HELP WANTED	11-15-2130		56.10	62137	7/20/20	
458006	1	6/19/20		RESOLUTION 1566	11-09-2130		242.18	62137	7/20/20	
458020	1	6/16/20		REZONING HEARING	11-09-2130		113.16	62137	7/20/20	
458045	1	6/23/20		POLICE OFFICER HELP WANTED	11-03-2130		115.20	62137	7/20/20	
458046	1	6/23/20		PARKS HELP WANTED	11-15-2130		39.60	62137	7/20/20	
458303	1	6/26/20		POLICE OFFICER HELP WANTED	11-03-2130		163.20	62137	7/20/20	
458304	1	6/26/20		PARKS HELP WANTED	11-15-2130		56.10	62137	7/20/20	
458355	1	6/30/20		POLICE HELP WANTED	11-03-2130		115.20	62137	7/20/20	
458356	1	6/30/20		PARKS HELP WANTED	11-15-2130		39.60	62137	7/20/20	
458358	1	6/30/20		UTILITY CLERK HELP WANTED	15-44-2130		61.20	62137	7/20/20	
								1293.74		
-----										
GOODLAND STAR-NEWS										

INVOICE NO	LN	DATE	PO NO	REFERENCE	TRACK		1099	NET	CHECK	PD DATE
					CD	GL ACCOUNT				
-----										
167 GOODLAND YOST FARM SUPPLY										
91187	1	6/05/20	18930	6 PK 2 CYCLE OIL		11-15-3070		12.75	62138	7/20/20
91187	2	6/05/20	18930	TRIMMER HEADS		11-15-3060		50.98	62138	7/20/20
91544	1	6/22/20	18849	CABLE/SPARK PLUG/TACH WEED WHI		11-11-3060		99.53	62138	7/20/20
91709	1	6/30/20	18951	CAP/ROPE LEAF BLOWER/WEED WHIP		11-11-3020	N	13.40	62138	7/20/20
91762	1	6/30/20		16" RS CHAIN		11-11-3120	N	63.28	62138	7/20/20
								-----		
GOODLAND YOST FARM SUPPLY								239.94		
3100 GRAINGER										
9568584008	1	6/22/20	18730	AIR FILTER MEDIA		15-40-3060		168.60	62139	7/20/20
9568584008	2	6/22/20	18730	SAFETY GLASSES		15-40-2310		6.84	62139	7/20/20
9581295376	1	7/07/20	18954	PAPER TOWELS		11-11-3120		54.87	62139	7/20/20
								-----		
GRAINGER								230.31		
1733 IN THE CAN LLC										
GEN20-248	1	7/01/20		SOLID WASTE BILLING JULY 2020		30-01-2220		38825.00	62110	7/13/20
								-----		
IN THE CAN LLC								38825.00		
2023 JCI INDUSTRIES INC										
8197572	1	6/26/20	18725	6" SILENT CHECK VALVE #8		15-40-3060		1311.50	62140	7/20/20
								-----		
JCI INDUSTRIES INC								1311.50		
3157 JG TIRE & AUTO SERVICE										
6546	1	7/07/20		TIRE REPAIR		21-42-3060		20.00	62141	7/20/20
								-----		
JG TIRE & AUTO SERVICE								20.00		
1092 KANSAS CORP. COMM.										
GEN20-260	1	7/01/20		2011-00357		39-01-2050		100.36	62142	7/20/20
GEN20-260	2	7/01/20		2011-00571		39-01-2050		32.77	62142	7/20/20
								-----		
KANSAS CORP. COMM.								133.13		
1424 KANSAS DEPARTMENT OF REVE										
GEN20-259	1	7/01/20		WATER PROTECTION FEE		48-01-5090		2565.81	62143	7/20/20
GEN20-259	2	7/01/20		CLEAN DRINKING WATER FEE		21-52-5020		2405.45	62143	7/20/20
								-----		
KANSAS DEPARTMENT OF REVE								4971.26		
613 KANSAS MUNICIPAL UTILITIE										
15356	1	7/01/20		KMU REGIONAL TRAINING		11-21-2170		64.18	62145	7/20/20
15356	2	7/01/20		KMU REGIONAL TRAINING		11-09-2170		64.18	62145	7/20/20
15356	3	7/01/20		KMU REGIONAL TRAINING		23-43-2170		64.18	62145	7/20/20
15356	4	7/01/20		KMU REGIONAL TRAINING		23-41-2170		64.18	62145	7/20/20
15356	5	7/01/20		KMU REGIONAL TRAINING		11-07-2170		64.18	62145	7/20/20
15356	6	7/01/20		KMU REGIONAL TRAINING		11-17-2170		64.18	62145	7/20/20
15356	7	7/01/20		KMU REGIONAL TRAINING		11-03-2170		449.26	62145	7/20/20
15356	8	7/01/20		KMU REGIONAL TRAINING		11-02-2170		192.54	62145	7/20/20
15356	9	7/01/20		KMU REGIONAL TRAINING		21-40-2170		128.36	62145	7/20/20
15356	10	7/01/20		KMU REGIONAL TRAINING		21-42-2170		128.36	62145	7/20/20

INVOICE NO	LN	DATE	PO NO	REFERENCE	TRACK		1099	NET	CHECK	PD DATE
					CD	GL ACCOUNT				
-----										
613 KANSAS MUNICIPAL UTILITIE										
15356	11	7/01/20		KMU REGIONAL TRAINING		15-40-2170		449.26	62145	7/20/20
15356	12	7/01/20		KMU REGIONAL TRAINING		15-42-2170		449.26	62145	7/20/20
15356	13	7/01/20		KMU REGIONAL TRAINING		15-44-2170		192.54	62145	7/20/20
15356	14	7/01/20		KMU REGIONAL TRAINING		11-11-2170		641.80	62145	7/20/20
15356	15	7/01/20		KMU REGIONAL TRAINING		11-15-2170		192.54	62145	7/20/20
								-----		
KANSAS MUNICIPAL UTILITIE								3209.00		
2052 KANSAS ONE-CALL SYSTEM, I										
060259	1	6/30/20		LOCATE FEE		15-42-2140		47.40	62146	7/20/20
060259	2	6/30/20		LOCATE FEE		21-42-2140		47.40	62146	7/20/20
								-----		
KANSAS ONE-CALL SYSTEM, I								94.80		
1072 KANSAS PAYMENT CENTER										
PR20200703	1	7/03/20		INCOME WITHHOLD		11-00-0012	N	497.08	3045123	7/10/20 E
PR20200703	2	7/03/20		INCOME WITHHOLD		15-00-0012	N	392.31	3045123	7/10/20 E
								-----		
KANSAS PAYMENT CENTER								889.39		
1989 KIMMI'S KOPY SHOP & DESIG										
4502	1	7/08/20		PO BOOKS		15-44-3120		1935.79	62147	7/20/20
								-----		
KIMMI'S KOPY SHOP & DESIG								1935.79		
262 KLOE/KKCI										
GEN20-273	1	6/06/20		GRADUATION 2020		11-02-2130		95.00	62148	7/20/20
								-----		
KLOE/KKCI								95.00		
1246 KMEA-NEARMAN PROJECT REVE										
WAPA-GO-20-07	1	7/07/20		WAPA/HYDRO JULY 20		15-40-2120		9904.20	62149	7/20/20
								-----		
KMEA-NEARMAN PROJECT REVE								9904.20		
2325 KS HEALTH & ENV LABORATOR										
1335202	1	4/22/20		COLILERT DRINKING WATER		21-40-2140		316.00	62150	7/20/20
								-----		
KS HEALTH & ENV LABORATOR								316.00		
523 KS PUBLIC EMP. RETIREMENT										
PR20200703	1	7/03/20		KPERS		11-00-0012	N	2559.64	3045122	7/10/20 E
PR20200703	2	7/03/20		KPERS		15-00-0012	N	1922.94	3045122	7/10/20 E
PR20200703	3	7/03/20		KPERS		21-00-0012	N	839.51	3045122	7/10/20 E
PR20200703	4	7/03/20		KPERS		23-00-0012	N	256.79	3045122	7/10/20 E
PR20200703	5	7/03/20		OPTIONAL KPERS		11-00-0012	N	162.51	3045122	7/10/20 E
PR20200703	6	7/03/20		OPTIONAL KPERS		15-00-0012	N	53.14	3045122	7/10/20 E
PR20200703	7	7/03/20		KPERS II		11-00-0012	N	1760.53	3045122	7/10/20 E
PR20200703	8	7/03/20		KPERS II		15-00-0012	N	1095.28	3045122	7/10/20 E
PR20200703	9	7/03/20		KPERS II		21-00-0012	N	76.75	3045122	7/10/20 E
PR20200703	10	7/03/20		KPERS II		23-00-0012	N	76.75	3045122	7/10/20 E
PR20200703	11	7/03/20		KPERS III		11-00-0012	N	2668.63	3045122	7/10/20 E
PR20200703	12	7/03/20		KPERS III		15-00-0012	N	1103.02	3045122	7/10/20 E

INVOICE NO	LN	DATE	PO NO	REFERENCE	TRACK		1099	NET	CHECK	PD DATE	
					CD	GL ACCOUNT					
-----											
523 KS PUBLIC EMP. RETIREMENT											
PR20200703	13	7/03/20		KPERS III		21-00-0012	N	399.17	3045122	7/10/20	E
PR20200703	14	7/03/20		KPERS III		23-00-0012	N	163.63	3045122	7/10/20	E
PR20200703	15	7/03/20		KPERS D&D		11-00-0012	N	478.33	3045122	7/10/20	E
PR20200703	16	7/03/20		KPERS D&D		15-00-0012	N	282.09	3045122	7/10/20	E
PR20200703	17	7/03/20		KPERS D&D		21-00-0012	N	90.03	3045122	7/10/20	E
PR20200703	18	7/03/20		KPERS D&D		23-00-0012	N	34.03	3045122	7/10/20	E
								-----			
KS PUBLIC EMP. RETIREMENT								14022.77			
857 LAW ENFORCEMENT SYSTEMS,											
210764	1	6/25/20	19043	FIELD INTERVIEW CARDS		11-03-2130		58.00	62151	7/20/20	
								-----			
LAW ENFORCEMENT SYSTEMS,								58.00			
2625 LAYNE CHRISTENSEN COMPANY											
1821441	1	6/24/20	18753	MEDIA TREATMENT PLANT		38-01-4080		104730.00	62152	7/20/20	
								-----			
LAYNE CHRISTENSEN COMPANY								104730.00			
3532 LOHR ELECTRIC LLC											
1814	1	7/01/20		480V STARTER OVERLOAD SEWER		23-41-2140		902.77	62153	7/20/20	
1814	2	7/01/20		POOL SEWER PUMP LABOR		11-25-3120		237.50	62153	7/20/20	
								-----			
LOHR ELECTRIC LLC								1140.27			
1440 MCCLURE PLUMBING & HEATIN											
28800	1	6/02/20		FAA FAUCET SEATS & WASHERS		11-13-3060		5.20	62154	7/20/20	
28801	1	6/05/20		CEMETERY FAUCET		11-19-3030		28.39	62154	7/20/20	
56012	1	6/17/20		REPLACE CONDENSER FAN MOTOR		11-02-3060		326.25	62154	7/20/20	
								-----			
MCCLURE PLUMBING & HEATIN								359.84			
2214 MIDWEST CONNECT											
S175268	1	7/03/20		POSTAGE RENEWAL		15-44-2140		1230.00	62155	7/20/20	
								-----			
MIDWEST CONNECT								1230.00			
2104 NATIONWIDE TRUST CO. FSB											
PR20200703	1	7/03/20		NATIONWIDE TRST		11-00-0012	N	325.00	3045126	7/10/20	E
PR20200703	2	7/03/20		NATIONWIDE TRST		15-00-0012	N	315.00	3045126	7/10/20	E
								-----			
NATIONWIDE TRUST CO. FSB								640.00			
3646 ND CHILD SUPPORT DIVISION											
PR20200703	1	7/03/20		ND CHILD SUPPOR		15-00-0012	N	114.93	3045128	7/10/20	E
								-----			
ND CHILD SUPPORT DIVISION								114.93			
2877 NUTRIEN AG SOLUTIONS											
42423854	1	6/03/20		SALVO		11-11-3040		60.00	62156	7/20/20	
42745445	1	6/22/20		MAKAZE/SALVO/RIFLE/GUNSMOKE		11-11-3040		374.73	62156	7/20/20	
42787600	1	6/24/20		AMINE 4 2,4-D		23-43-3040		149.50	62156	7/20/20	
42840557	1	6/26/20		SALVO/MAKAZE/GUNSMOKE		11-11-3040		400.73	62156	7/20/20	

INVOICE NO	LN	DATE	PO NO	REFERENCE	TRACK		1099	NET	CHECK	PD DATE
					CD	GL ACCOUNT				
-----										
2877 NUTRIEN AG SOLUTIONS										
								-----		
NUTRIEN AG SOLUTIONS								984.96		
3085 OFFICE WORKS & HOME FURNI										
1769-0620	1	6/28/20		COPY COUNT		11-02-3120		113.19	62157	7/20/20
251849	1	6/26/20		2 NOTARY STAMPS		15-44-3120		62.00	62157	7/20/20
								-----		
OFFICE WORKS & HOME FURNI								175.19		
1903 PACE ANALYTICAL										
2060109769	1	7/13/20		ANALYSIS		23-41-2070		311.00	62158	7/20/20
								-----		
PACE ANALYTICAL								311.00		
3403 PEST AWAY LLC										
10511	1	6/04/20		PEST CONTROL-BALL FIELDS		11-23-3110		15.00	62159	7/20/20
10511	2	6/04/20		PEST CONTROL-CITY HALL		11-02-2140		30.00	62159	7/20/20
10511	3	6/04/20		PEST CONTROL-AIRPORT		11-13-2140		15.00	62159	7/20/20
10511	4	6/04/20		PEST CONTROL-MUSEUM		11-17-2140		30.00	62159	7/20/20
10511	5	6/04/20		PEST CONTROL-WTR TREATMENT PLT		21-40-2140		35.00	62159	7/20/20
10511	6	6/04/20		PEST CONTROL-CITY SHOP		11-11-2140		50.00	62159	7/20/20
10511	7	6/04/20		PEST CONTROL-POWER PLANT		15-40-2140		54.50	62159	7/20/20
10511	8	6/04/20		PEST CONTROL-POLICE		11-03-2140		35.00	62159	7/20/20
10511	9	6/04/20		PEST CONTROL-WELCOME CENTER		11-21-2140		10.00	62159	7/20/20
10511	10	6/04/20		BIRD CONTROL		11-02-2140		120.00	62159	7/20/20
10511	11	6/04/20		PEST CONTROL-PARKS		11-15-2140		35.00	62159	7/20/20
10511	12	6/04/20		PEST CONTROL-PD TREES		11-03-2140		66.00	62159	7/20/20
								-----		
PEST AWAY LLC								495.50		
2785 PLAINS HEATING & AIR COND										
GLD1759	1	7/06/20		WTR TREATMENT PLANT CHECKUP		21-40-2140		120.00	62160	7/20/20
								-----		
PLAINS HEATING & AIR COND								120.00		
1924 PRAIRIE LAND ELECTRIC										
4787	1	7/08/20		POWER BILL/JUNE 20		15-40-2120		312433.20	62161	7/20/20
								-----		
PRAIRIE LAND ELECTRIC								312433.20		
3809 PRO TRACK & TENNIS, INC										
GEN20-277	1	5/29/20		RESURFACE TENNIS COURTS 1/3		38-01-4010		8800.00	62162	7/20/20
								-----		
PRO TRACK & TENNIS, INC								8800.00		
3794 QUADIENT LEASING USA, INC										
N8380179	1	7/05/20		MAIL MACHINE		15-44-2160		988.00	62163	7/20/20
								-----		
QUADIENT LEASING USA, INC								988.00		
407 SALINA SUPPLY COMPANY										
S100169957.004	1	6/19/20	18766	MICRON BAG FILTERS X 50		21-40-3060		398.68	62164	7/20/20
								-----		

INVOICE NO	LN	DATE	PO NO	REFERENCE	TRACK		1099	NET	CHECK	PD DATE
					CD	GL ACCOUNT				
SALINA SUPPLY COMPANY								398.68		
924 SCHEOPNER'S WATER CONDITI										
8801	1	6/01/20	19042	COOLER RENT/WATER		11-03-2140		45.00	62165	7/20/20
GEN20-261	1	6/01/20		RO RENT		11-02-3120		144.00	62165	7/20/20
SCHEOPNER'S WATER CONDITI								189.00		
413 SCHLOSSER, INC.										
72237	1	7/02/20		14TH & CALDWELL		11-11-4050		315.00	62166	7/20/20
72243	1	7/06/20		14TH & CALDWELL		11-11-4050		510.00	62166	7/20/20
72253	1	7/07/20		7TH & BROADWAY		21-42-3050		420.00	62166	7/20/20
72256	1	7/07/20		14TH & CALDWELL		11-11-4050		612.00	62166	7/20/20
72262	1	7/08/20		14TH & CALDWELL		11-11-4050		306.00	62166	7/20/20
72264	1	7/08/20		STREET SHOP		15-42-3050		99.74	62166	7/20/20
72272	1	7/09/20		14TH & CALDWELL CONCRETE		11-11-4050		975.00	62166	7/20/20
SCHLOSSER, INC.								3237.74		
418 SELF INSURANCE FUND										
GEN20-258	1	7/01/20		EMP BENEFIT HEALTH		45-01-1050		23423.37	62167	7/20/20
GEN20-258	2	7/01/20		ELECTRIC PROD INSURANCE		15-40-1050		4867.01	62167	7/20/20
GEN20-258	3	7/01/20		ELECTRIC DIST INSURANCE		15-42-1050		6470.22	62167	7/20/20
GEN20-258	4	7/01/20		ELEC COMM & GEN INSURANCE		15-44-1050		4448.31	62167	7/20/20
GEN20-258	5	7/01/20		WATER PROD INSURNACE		21-40-1050		824.59	62167	7/20/20
GEN20-258	6	7/01/20		WATER DIST INSURANCE		21-42-1050		3036.32	62167	7/20/20
GEN20-258	7	7/01/20		SEWER TREATMENT INSURANCE		23-41-1050		643.86	62167	7/20/20
GEN20-258	8	7/01/20		SEWER COLLECTION INSURANCE		23-43-1050		1129.59	62167	7/20/20
SELF INSURANCE FUND								44843.27		
2801 SHAMROCK FOODS COMPANY										
20659329	1	7/02/20	18009	CONCESSIONS		11-25-3130		300.65	62168	7/20/20
20659329	2	7/02/20	18009	CLEANER		11-25-3120		132.07	62168	7/20/20
SHAMROCK FOODS COMPANY								432.72		
421 SHARE CORPORATION										
132793	1	5/29/20		GROUND STERILE		23-41-3040		396.60	62169	7/20/20
132793	2	5/29/20		CUTTING CRIMP TOOL		23-41-3020		120.00	62169	7/20/20
136975	1	7/02/20		ORACLE		15-40-3120		466.20	62169	7/20/20
SHARE CORPORATION								982.80		
425 SHERMAN COUNTY TREASURER										
02-00009117	1	6/30/20		CONSTRUCTION & DEMO		15-44-3120		13.83	62170	7/20/20
SHERMAN COUNTY TREASURER								13.83		
647 SNAPPY SNACK VENDING & GA										
847886	1	7/02/20	18008	CONCESSIONS		11-25-3130		81.60	62171	7/20/20
SNAPPY SNACK VENDING & GA								81.60		

INVOICE NO	LN	DATE	PO NO	REFERENCE	TRACK		1099	NET	CHECK	PD DATE
					CD	GL ACCOUNT				
-----										
335449	1	5/29/20		435 SOLOMON ELECTRIC SUPPLY, 1 PHASE POLEMOUNT X 2		15-42-3050		812.05	62172	7/20/20
				SOLOMON ELECTRIC SUPPLY,				812.05		
GEN20-272	1	7/13/20		1898 SPORER LAND DEVELOPMENT, PAY ESTIMATE 16		38-01-4010		4422.53	62173	7/20/20
GEN20-272	2	7/13/20		PAY ESTIMATE 16		04-01-2050		272842.46	62173	7/20/20
				SPORER LAND DEVELOPMENT,				277264.99		
4955876-00	1	6/23/20	18861	438 STANION WHOLESALE ELECTRI CABLE POSITION/SPLICE BOX		15-42-3050		4610.71	62174	7/20/20
				STANION WHOLESALE ELECTRI				4610.71		
GEN20-274	1	6/29/20		1245 THORSON CARPET INSTALLAT CHAPEL STEPS NEW METAL		11-19-3030	M	249.00	62175	7/20/20
				THORSON CARPET INSTALLAT				249.00		
3005323460	1	7/01/20		1736 THYSSENKRUPP ELEVATOR ELEVATOR MAINT		11-02-2140		464.76	62176	7/20/20
				THYSSENKRUPP ELEVATOR				464.76		
269629	1	7/06/20		987 TMHC SERVICES INC ADMINISTRATIVE FEE		15-40-2140		10.50	62178	7/20/20
269629	2	7/06/20		ADMINISTRATIVE FEE		15-42-2140		42.00	62178	7/20/20
269629	3	7/06/20		ADMINISTRATIVE FEE		21-42-2140		10.50	62178	7/20/20
269629	4	7/06/20		ADMINISTRATIVE FEE		11-11-2140		52.50	62178	7/20/20
270223	1	7/06/20		EAP		11-03-2140		8.00	62178	7/20/20
270223	2	7/06/20		EAP		11-04-2140		1.00	62178	7/20/20
270223	3	7/06/20		EAP		11-07-2140		1.00	62178	7/20/20
270223	4	7/06/20		EAP		11-09-2140		1.00	62178	7/20/20
270223	5	7/06/20		EAP		11-17-2140		1.00	62178	7/20/20
270223	6	7/06/20		EAP		11-02-2140		3.00	62178	7/20/20
270223	7	7/06/20		EAP		15-44-2140		5.00	62178	7/20/20
270223	8	7/06/20		EAP		11-15-3120		3.00	62178	7/20/20
270223	9	7/06/20		EAP		15-40-2140		8.00	62178	7/20/20
270223	10	7/06/20		EAP		11-11-2140		3.00	62178	7/20/20
				TMHC SERVICES INC				149.50		
121808627	1	7/08/20		1565 ULINE WALKING TRAIL DOG WASTE		38-01-4010		1346.79	62179	7/20/20
				ULINE				1346.79		
216503	1	6/30/20	19036	3568 UNDERGROUND VAULTS SHRED SERVICE		11-03-2140		45.00	62180	7/20/20
				UNDERGROUND VAULTS				45.00		



INVOICE NO	LN	DATE	PO NO	REFERENCE	TRACK		1099	NET	CHECK	PD DATE
					CD	GL ACCOUNT				
-----										
972 UNIFIRST CORPORATION										
2450665774	1	6/01/20		UNIFORMS		21-40-3160		62.10	62182	7/20/20
2450665774	2	6/01/20		UNIFORMS		23-41-3160		17.05	62182	7/20/20
2450665774	3	6/01/20		UNIFORMS		23-43-3160		17.05	62182	7/20/20
2450665880	1	6/01/20		UNIFORMS		11-15-3160		28.00	62182	7/20/20
2450666737	1	6/08/20		UNIFORMS		21-40-3160		62.10	62182	7/20/20
2450666737	2	6/08/20		UNIFORMS		23-41-3160		17.05	62182	7/20/20
2450666737	3	6/08/20		UNIFORMS		23-43-3160		17.05	62182	7/20/20
2450666739	1	6/08/20		UNIFORMS		11-11-3160		127.25	62182	7/20/20
2450666840	1	6/08/20		UNIFORMS		11-15-3160		28.00	62182	7/20/20
2450667677	1	6/15/20		UNIFORMS		21-40-3160		65.48	62182	7/20/20
2450667677	2	6/15/20		UNIFORMS		23-41-3160		17.05	62182	7/20/20
2450667677	3	6/15/20		UNIFORMS		23-43-3160		17.05	62182	7/20/20
2450667678	1	6/15/20		UNIFORMS		11-11-3160		123.81	62182	7/20/20
2450667772	1	6/15/20		UNIFORMS		11-15-3160		116.55	62182	7/20/20
2450668644	1	6/22/20		UNIFORMS		21-40-3160		64.60	62182	7/20/20
2450668644	2	6/22/20		UNIFORMS		23-41-3160		17.05	62182	7/20/20
2450668644	3	6/22/20		UNIFORMS		23-43-3160		17.05	62182	7/20/20
2450668647	1	6/22/20		UNIFORMS		11-11-3160		127.83	62182	7/20/20
2450668743	1	6/22/20		UNIFORMS		11-15-3160		45.05	62182	7/20/20
2450669583	1	6/29/20		UNIFORMS		21-40-3160		62.10	62182	7/20/20
2450669583	2	6/29/20		UNIFORMS		23-41-3160		17.05	62182	7/20/20
2450669583	3	6/29/20		UNIFORMS		23-43-3160		17.05	62182	7/20/20
2450669586	1	6/29/20		UNIFORMS		11-11-3160		151.85	62182	7/20/20
2450669683	1	6/29/20		UNIFORMS		11-15-3160		45.05	62182	7/20/20
								-----		
UNIFIRST CORPORATION								1280.27		
3524 VERIZON										
9857758930	1	7/01/20		VAN/IPAD		11-06-2180		40.01	62183	7/20/20
9857758930	2	7/01/20		IPAD/CELL PHONE		15-42-3120		111.35	62183	7/20/20
9857758930	3	7/01/20		IPAD/CELL PHONE		21-40-2180		150.56	62183	7/20/20
9857758930	4	7/01/20		CELL PHONES		11-03-2180		407.83	62183	7/20/20
9857758930	5	7/01/20		IPAD		11-11-3120		40.01	62183	7/20/20
								-----		
VERIZON								749.76		
3313 VISA										
GEN20-262	1	6/30/20		PRESSURE SWITCH		11-11-3060		36.73	62185	7/20/20
GEN20-262	2	6/30/20		UNLOADER,SAFETY VALVE/PRESSURE		21-42-3060		96.98	62185	7/20/20
GEN20-262	3	6/30/20		KENTON/TANNER TRAINING		11-11-2190		259.22	62185	7/20/20
GEN20-262	4	6/30/20		SAI SUBSCRIPTION/SIGN MACHINE		11-11-3120		49.95	62185	7/20/20
GEN20-263	1	6/30/20		WELCOME CENTER WALL DECOR		11-21-3120		445.61	62185	7/20/20
GEN20-263	2	6/30/20		POSTAGE		11-21-3130		21.10	62185	7/20/20
GEN20-263	3	6/30/20		PIZZA-SPECIAL COMM MEETING		11-02-3120		41.59	62185	7/20/20
GEN20-264	1	6/30/20		VERIZON		11-09-3120		20.00	62185	7/20/20
GEN20-264	2	6/30/20		YEARLY SUBSCRIPTION		15-44-3060		99.50	62185	7/20/20
GEN20-264	3	6/30/20		LIFEGUARD CERTIFICATION		11-25-2140		494.00	62185	7/20/20
GEN20-265	1	6/30/20		ELEVATOR KEY SET		11-07-3020		225.98	62185	7/20/20
GEN20-266	1	6/30/20		ENVELOPES/PAPER TOWELS		15-44-3120		92.44	62185	7/20/20
GEN20-266	2	6/30/20		PAPER TOWELS		11-25-3120		23.01	62185	7/20/20
GEN20-267	1	6/30/20		REGISTER FEE METH INVEST COURS		25-01-2170		100.00	62185	7/20/20
GEN20-267	2	6/30/20		POSTAGE		11-03-3130		21.80	62185	7/20/20
GEN20-267	3	6/30/20		ICLOUD STORAGE		11-03-2140		.99	62185	7/20/20

INVOICE NO	LN	DATE	PO NO	REFERENCE	TRACK		1099	NET	CHECK	PD DATE
					CD	GL ACCOUNT				
-----										
3313 VISA										
GEN20-268	1	6/30/20		CRANKSHAFT DIST GAGE		15-40-3060		690.00	62185	7/20/20
GEN20-268	2	6/30/20		WORK PANTS		15-40-3160		305.13	62185	7/20/20
GEN20-268	3	6/30/20		WORK PANTS		15-42-3160		55.52	62185	7/20/20
GEN20-269	1	6/30/20		NERF BARS FOR UNIT 49		15-42-3060		251.78	62185	7/20/20
GEN20-269	2	6/30/20		ICLOUD STORAGE		15-42-2140		.99	62185	7/20/20
GEN20-270	1	6/30/20		KLETC WRIGHT MEALS		11-03-2190		56.75	62185	7/20/20
GEN20-270	2	6/30/20		KLETC WRIGHT FUEL		11-03-3070		127.90	62185	7/20/20
GEN20-270	3	6/30/20		LABEL REFILLS/SF12 BB BATTERY		11-03-3120		42.34	62185	7/20/20
								-----		
VISA								3559.31		
2895 VISION CARE DIRECT ADM.										
PR20200703	1	7/03/20		VISION CARE DIR		11-00-0012	N	156.30	62108	7/10/20
PR20200703	2	7/03/20		VISION CARE DIR		15-00-0012	N	96.79	62108	7/10/20
PR20200703	3	7/03/20		VISION CARE DIR		21-00-0012	N	4.89	62108	7/10/20
PR20200703	4	7/03/20		VISION CARE DIR		23-00-0012	N	9.78	62108	7/10/20
VISION CARE DIRECT ADM.								-----	267.76	
***** REPORT TOTAL *****								-----	955136.42	

JRNL ID/ ACCOUNT NUMBER	OTHER NUMBER/ ACCOUNT TITLE	OTHER REFERENCE/ REFERENCE	DEBIT	CREDIT	BANK #
PAYROLL					
11-00-0011	GENERAL EMP TAX A/P	SS/MED EMPE GEN	4,719.02		
11-00-0001	GENERAL OPERATING CASH	SS/MED EMPE GEN		4,719.02	1
15-00-0011	ELECTRIC EMP TAX A/P	SS/MED EMPE ELE	2,101.83		
15-00-0001	ELECTRIC CASH	SS/MED EMPE ELE		2,101.83	1
21-00-0011	WATER EMP TAX A/P	SS/MED EMPE WAT	676.39		
21-00-0001	WATER CASH	SS/MED EMPE WAT		676.39	1
23-00-0011	SEWER EMP TAX A/P	SS/MED EMPE SEW	256.57		
23-00-0001	SEWER CASH	SS/MED EMPE SEW		256.57	1
11-00-0011	GENERAL EMP TAX A/P	SS/MED EMPE GEN	4,719.02		
11-00-0001	GENERAL OPERATING CASH	SS/MED EMPE GEN		4,719.02	1
15-00-0011	ELECTRIC EMP TAX A/P	SS/MED EMPE ELE	2,101.83		
15-00-0001	ELECTRIC CASH	SS/MED EMPE ELE		2,101.83	1
21-00-0011	WATER EMP TAX A/P	SS/MED EMPE WAT	676.39		
21-00-0001	WATER CASH	SS/MED EMPE WAT		676.39	1
23-00-0011	SEWER EMP TAX A/P	SS/MED EMPE SEW	256.57		
23-00-0001	SEWER CASH	SS/MED EMPE SEW		256.57	1
11-00-0011	GENERAL EMP TAX A/P	FED TAX GEN	4,857.70		
11-00-0001	GENERAL OPERATING CASH	FED TAX GEN		4,857.70	1
15-00-0011	ELECTRIC EMP TAX A/P	FED TAX ELE	2,018.55		
15-00-0001	ELECTRIC CASH	FED TAX ELE		2,018.55	1
21-00-0011	WATER EMP TAX A/P	FED TAX WAT	828.67		
21-00-0001	WATER CASH	FED TAX WAT		828.67	1
23-00-0011	SEWER EMP TAX A/P	FED TAX SEW	205.64		
23-00-0001	SEWER CASH	FED TAX SEW		205.64	1
11-00-0011	GENERAL EMP TAX A/P	STATE TAX GEN	2,228.15		
11-00-0001	GENERAL OPERATING CASH	STATE TAX GEN		2,228.15	1
15-00-0011	ELECTRIC EMP TAX A/P	STATE TAX ELE	1,116.75		
15-00-0001	ELECTRIC CASH	STATE TAX ELE		1,116.75	1
21-00-0011	WATER EMP TAX A/P	STATE TAX WAT	411.91		
21-00-0001	WATER CASH	STATE TAX WAT		411.91	1
23-00-0011	SEWER EMP TAX A/P	STATE TAX SEW	119.05		
23-00-0001	SEWER CASH	STATE TAX SEW		119.05	1
07-01-5030	SELF INSUR BCBS STOP LOSS PYMT	STOP LOSS 6/30	27,573.12		
07-00-0001	SELF INSUR CASH	STOP LOSS 6/30		27,573.12	1
07-01-5030	SELF INSUR BCBS STOP LOSS PYMT	STOP LOSS 7/07	11,387.17		
07-00-0001	SELF INSUR CASH	STOP LOSS 7/07		11,387.17	1
07-01-5030	SELF INSUR BCBS STOP LOSS PYMT	STOP LOSS 07/14	3,603.59		
07-00-0001	SELF INSUR CASH	STOP LOSS 07/14		3,603.59	1
45-01-1050	EMP BENEFIT HEALTH/ACC INSUR	BCBS GEN	12,386.48		
45-00-0001	EMP BENEFITS CASH	BCBS GEN		12,386.48	1
15-40-1050	ELEC. PROD. INSURANCE	BCBS ELPR	2,428.27		
15-00-0001	ELECTRIC CASH	BCBS ELPR		2,428.27	1
15-42-1050	ELEC. DIST. INSURANCE	BCBS ELDI	3,240.09		
15-00-0001	ELECTRIC CASH	BCBS ELDI		3,240.09	1
15-44-1050	ELEC. COMM & GEN INSURANCE	BCBS ELCG	2,167.56		
15-00-0001	ELECTRIC CASH	BCBS ELCG		2,167.56	1
21-40-1050	WATER PROD. INSURANCE	BCBS WAPR	465.82		
21-00-0001	WATER CASH	BCBS WAPR		465.82	1
21-42-1050	WATER DIST. INSURANCE	BCBS WADI	1,486.06		
21-00-0001	WATER CASH	BCBS WADI		1,486.06	1
23-41-1050	SEWER TREATMENT INSURANCE	BCBS SETR	355.98		

JRNL ID/ ACCOUNT NUMBER	OTHER NUMBER/ ACCOUNT TITLE	OTHER REFERENCE/ REFERENCE	DEBIT	CREDIT	BANK #
23-00-0001	SEWER CASH	BCBS SETR		355.98	1
23-43-1050	SEWER COLL. INSURANCE	BCBS SECO	545.20		
23-00-0001	SEWER CASH	BCBS SECO		545.20	1
15-44-2140	ELEC. COMM & GEN PROF. SERV.	CC TRANS	2,320.85		
15-00-0001	ELECTRIC CASH	CC TRANS		2,320.85	1
14-01-5080	SALES TAX REMITTANCE TO STATE	SALES TAX	17,804.41		
14-00-0001	SALE TAX CASH	SALES TAX		17,804.41	1
15-50-5020	ELECTRIC COMPENSATING TAX	SALES TAX	112.88		
15-00-0001	ELECTRIC CASH	SALES TAX		112.88	1
11-25-3130	GEN OP ST WATER PK CONC. SUPP	SALES TAX	319.74		
11-00-0001	GENERAL OPERATING CASH	SALES TAX		319.74	1
11-00-0470	GEN OP ED WELCOME CTR SALES	SALES TAX	18.06		
11-00-0001	GENERAL OPERATING CASH	SALES TAX		18.06	1
11-00-0893	GENERAL OP. MISC RECEIPTS	SALES TAX	12.94		
11-00-0001	GENERAL OPERATING CASH	SALES TAX		12.94	1
11-00-0893	GENERAL OP. MISC RECEIPTS	SALES TAX	2.30		
11-00-0001	GENERAL OPERATING CASH	SALES TAX		2.30	1
15-50-5020	ELECTRIC COMPENSATING TAX	SALES TAX	101.32		
15-00-0001	ELECTRIC CASH	SALES TAX		101.32	1

Journal Total :	113,625.88	113,625.88
Sub Total	113,625.88	113,625.88
** Report Total **	113,625.88	113,625.88

FUND	NAME	DEBITS	CREDITS
07	SELF INSURANCE	42,563.88	42,563.88
11	GENERAL	16,876.93	16,876.93
14	SALES TAX	17,804.41	17,804.41
15	ELECTRIC UTILITY	17,709.93	17,709.93
21	WATER UTILITY	4,545.24	4,545.24
23	SEWER UTILITY	1,739.01	1,739.01
45	EMPLOYEE BENEFIT	12,386.48	12,386.48
TOTALS		113,625.88	113,625.88

\*\* Transactions affected cash may need to be entered in Bank Rec! \*\*  
 \*\* Review transactions that have a number in the Bank # column. \*\*

ACCOUNT NUMBER	ACCOUNT TITLE	DEBITS	CREDITS	NET
07-00-0001	SELF INSUR CASH	.00	42,563.88	42,563.88-
07-01-5030	SELF INSUR BCBS STOP LOSS PYMT	42,563.88	.00	42,563.88
11-00-0001	GENERAL OPERATING CASH	.00	16,876.93	16,876.93-
11-00-0011	GENERAL EMP TAX A/P	16,523.89	.00	16,523.89
11-00-0470	GEN OP ED WELCOME CTR SALES	18.06	.00	18.06
11-00-0893	GENERAL OP. MISC RECEIPTS	15.24	.00	15.24
11-25-3130	GEN OP ST WATER PK CONC. SUPP	319.74	.00	319.74
14-00-0001	SALE TAX CASH	.00	17,804.41	17,804.41-
14-01-5080	SALES TAX REMITTANCE TO STATE	17,804.41	.00	17,804.41
15-00-0001	ELECTRIC CASH	.00	17,709.93	17,709.93-
15-00-0011	ELECTRIC EMP TAX A/P	7,338.96	.00	7,338.96
15-40-1050	ELEC. PROD. INSURANCE	2,428.27	.00	2,428.27
15-42-1050	ELEC. DIST. INSURANCE	3,240.09	.00	3,240.09
15-44-1050	ELEC. COMM & GEN INSURANCE	2,167.56	.00	2,167.56
15-44-2140	ELEC. COMM & GEN PROF. SERV.	2,320.85	.00	2,320.85
15-50-5020	ELECTRIC COMPENSATING TAX	214.20	.00	214.20
21-00-0001	WATER CASH	.00	4,545.24	4,545.24-
21-00-0011	WATER EMP TAX A/P	2,593.36	.00	2,593.36
21-40-1050	WATER PROD. INSURANCE	465.82	.00	465.82
21-42-1050	WATER DIST. INSURANCE	1,486.06	.00	1,486.06
23-00-0001	SEWER CASH	.00	1,739.01	1,739.01-
23-00-0011	SEWER EMP TAX A/P	837.83	.00	837.83
23-41-1050	SEWER TREATMENT INSURANCE	355.98	.00	355.98
23-43-1050	SEWER COLL. INSURANCE	545.20	.00	545.20
45-00-0001	EMP BENEFITS CASH	.00	12,386.48	12,386.48-
45-01-1050	EMP BENEFIT HEALTH/ACC INSUR	12,386.48	.00	12,386.48
TRANSACTION TOTALS		113,625.88	113,625.88	.00

# PAYROLL REGISTER

ORDINANCE #2020-P14

7/10/2020

<u>DEPARTMENT</u>	<u>GROSS PAY</u>
GENERAL	62,784.88
ELECTRIC	28,208.61
WATER	9,003.53
SEWER	3,402.89
TOTAL	<u>103,399.91</u>

PASSED AND SIGNED THIS \_\_\_\_\_ DAY OF \_\_\_\_\_, 2020

\_\_\_\_\_  
CITY CLERK

\_\_\_\_\_  
MAYOR

ARTICLE 9  
ZONING DISTRICT AMENDMENT (REZONING) PROCEDURE

A proposal for a change in district classification (rezoning) may be initiated by either the Governing Body, the Planning Commission or by application of the owner of property affected.

1. The applicant shall first obtain the proper application form from the Office of the Building Official.
2. The rezoning application form shall be completely filled out and returned to the Office of the Building Official with the appropriate filing fee, deposit and required information. **An application shall not be scheduled for public hearing until the application form has been fully completed, the filing fee and deposit paid, and all required information submitted. The deposit shall be used to cover expenses incurred by the city in the processing notification and review of the application. If the city's processing notification and review costs exceed the amount of the initial deposit, the applicant shall be required to pay the additional amount.**
3. The Office of the Building Official shall be responsible for having an official notice of the public hearing published in a newspaper of general circulation at least twenty (20) days prior to the hearing. The Office of the Building Official shall be responsible for following the administrative procedures for a zoning district amendment as prescribed in the adopted zoning regulations. The notice shall fix the time and place of the hearing and shall describe generally the change requested.

The applicant shall be responsible for submitting a list of surrounding property owners to the office of the Building Official. The office shall send a written notice to notify surrounding property owners of the public hearing and of their right to file protest petitions and shall explain the protest procedure. The written notice shall be sent to all owners of real property within 300 feet of the property if the property proposed to be rezoned is located in the City's municipal boundaries and 1,000 feet if the property proposed to be rezoned is located within the City's extraterritorial zoning district.

This notice shall be mailed at least twenty (20) days before the hearing at which said rezoning application is scheduled to be considered. The notice shall state the intent of the request, fix the time and place for the hearing as determined by the Building Official and shall contain the following:

- A. A statement regarding the proposed zoning classification;
  - B. A legal description or general description that is sufficient to identify the property under consideration; and
  - C. A statement that a complete legal description is available for public inspection in the City of Goodland Building Official office.
4. The Planning Commission shall hold a public hearing at which time citizens and parties of interest shall have an opportunity to be heard.

# CITY OF GOODLAND, KANSAS, - PROCEDURES MANUAL

---

## *Article 9 – Zoning District Amendment (Rezoning) Procedure*

5. The public hearing may be adjourned from time to time and, upon its conclusion, the Planning Commission shall prepare and adopt its recommendation to the Governing Body. This recommendation shall be submitted along with an accurate record of the public hearing.



CITY OF GOODLAND, KANSAS, - PROCEDURES MANUAL

Article 9 - Zoning District Amendment (Rezoning) Procedure

CITY OF GOODLAND, KANSAS  
REZONING APPLICATION

Return Form to:  
Inspections and Code Enforcement Department  
City of Goodland  
204 W. 11<sup>th</sup> Street  
Goodland, KS 67735-0059  
(785) 899-4550  
(785) 899-4532 (fax)

For Office Use Only  
Case No.: \_\_\_\_\_  
Deposit: \_\_\_\_\_  
Date Advertised: \_\_\_\_\_  
Date Notices Sent: \_\_\_\_\_  
Public Hearing Date: \_\_\_\_\_

APPLICANT INFORMATION:

Applicant: Raul-Lisa Rodriguez Phone: 806 336 8732  
Address: 902 E 8<sup>th</sup> St. Goodland Zip: 67735  
Owner: Raul-Lisa Rodriguez Phone: \_\_\_\_\_  
Address: 1612 Colorado Blvd. KS (Rezone) Zip: 67735

PROPERTY INFORMATION:

Street Address or General Location of Property: 1612 Colorado - Goodland KS  
Property is Located In (Legal Description):  
Lot (3) and four (4) in Block (8) of Sharps Addition  
to the city of Goodland shuman County Kansas.  
Present Zoning Residential Requested Zoning: Commercial Acreage: \_\_\_\_\_  
Present Use of Property: empty lot  
Character of the Neighborhood: \_\_\_\_\_

SURROUNDING LAND USE AND ZONING:

	Land Use	Zoning
North	<u>Residential structure</u>	<u>R-1</u>
South	<u>Residential structure</u>	<u>C-1</u>
East	<u>Vacant Lot</u>	<u>R-1</u>
West	<u>Residential structure</u>	<u>R-1</u>

RELATIONSHIP TO EXISTING ZONING PATTERN:

1. Would the proposed change create a small, isolated district unrelated to surrounding districts? Yes \_\_\_\_\_ No

CITY OF GOODLAND, KANSAS, - PROCEDURES MANUAL

Article 9 - Zoning District Amendment (Rezoning) Procedure

If yes, explain: \_\_\_\_\_

- 2. Are there substantial reasons why the property cannot be used in accordance with existing zoning? Yes [checked] No \_\_\_\_\_

If yes, explain: Need a bigger shop for services trucks (business)

CONFORMANCE WITH COMPREHENSIVE PLAN:

- 1. Is the proposed change consistent with the goals, objectives and policies set forth in the Comprehensive Plan? Yes \_\_\_\_\_ No \_\_\_\_\_
2. Is the proposed change consistent with the Future Land Use Map? Yes \_\_\_\_\_ No \_\_\_\_\_

TRAFFIC CONDITIONS:

- 1. Identify the street(s) with access to the property: between 16th St + 17th Street on Colorado Ave Goodland
2. Identify the classification of those street(s) as Arterial, Collector or Local and each Right-of-Way width:

Table with 3 columns: Street Name, Classification, Right-of-Way Width. Row 1: Colorado, Local, 75'

- 3. Will turning movements caused by the proposed use create an undue traffic hazard? Yes \_\_\_\_\_ No [checked]

IS PLATTING OR REPLATTING REQUIRED TO PROVIDE FOR:

- 1. Appropriately Sized Lots? Yes [checked] No \_\_\_\_\_
2. Properly Sized Street Right-of-Way? Yes [checked] No \_\_\_\_\_
3. Drainage Easements? Yes [checked] No \_\_\_\_\_
4. Utility Easements: Electricity? Yes [checked] No \_\_\_\_\_ Gas? Yes [checked] No \_\_\_\_\_ Sewers? Yes [checked] No \_\_\_\_\_ Water? Yes [checked] No \_\_\_\_\_

5. Additional Comments: \_\_\_\_\_

**CITY OF GOODLAND, KANSAS, - PROCEDURES MANUAL**

**Article 9 – Zoning District Amendment (Rezoning) Procedure**

**UNIQUE CHARACTERISTICS OF PROPERTY AND ADDITIONAL COMMENTS:**

---

---

---

**THE FOLLOWING MUST ACCOMPANY YOUR APPLICATION:**

1. One copy of a legal description of the property proposed to be rezoned.
2. One copy of a statement describing the impact of the proposed change, including any traffic conditions that may result; any danger from fire hazards; how the proposed change may affect the character of the surrounding properties; and how the proposed change will benefit the City of Goodland.
3. Certified list of property owners within:
  - A. 300 feet of the property if the proposed P-D is located within the city's municipal boundaries;
  - B. 1,000 feet of the property if the proposed P-D is adjacent to the city's corporate limits.
4. If the proposed zoning requires a conditional use permit, the rezoning application shall be accompanied by a conditional use permit application defining the specifically requested use or list of uses.

*Dina Rodriguez*

Applicant's Signature

4/10/2020

Date

**CITY OF GOODLAND, KANSAS, - PROCEDURES MANUAL**

***Article 9 – Zoning District Amendment (Rezoning) Procedure***

*(This Page Left Blank Intentionally)*

Jimmy Reyna and Dominga Reyna, husband and wife, of Sherman County, State of Kansas,  
CONVEY AND WARRANT unto Raul Rodriguez and Lisa Rodriguez, husband and wife, as joint  
tenants with right of survivorship and not as tenants in common, the following described real  
estate in Sherman County, Kansas, to wit:

Lots Three (3), and Four (4), in Block Eight (8), of Sharp's Addition to the City of Goodland,  
Sherman County, Kansas, according to the recorded plat thereof.

Subject to easements and restrictions of record.

In consideration of one dollar (\$1.00) and other valuable consideration.

DATED this 30<sup>th</sup> day of January, 2014.

Jimmy Reyna  
Jimmy Reyna

Dominga Reyna  
Dominga Reyna

STATE OF KANSAS, COUNTY OF SHERMAN, SS  
This instrument was filed this 30th  
day of January 2014 at 3:56 P.M.  
and recorded in Microfilm Book 178  
at Page 678 FEE \$ 8.00

Billie R. Hoyt  
Register of Deeds  
Billie R. Hoyt



ACKNOWLEDGMENT

State of Kansas County of Sherman ss:

BE IT REMEMBERED that on this 30<sup>th</sup> day of January, 2014, before me,  
the undersigned, a Notary Public in and for the County and State aforesaid, came Jimmy Reyna  
and Dominga Reyna, husband and wife, who are personally known to me to be the same  
person(s) who executed the within instrument of writing and such persons duly acknowledged  
the execution of the same.

IN WITNESS WHEREOF, I have hereunto set my hand and affixed my seal the day and  
year last above written

Amber Phillips

Notary Public  
My commission expires:

SEAL



ENTERED IN TRANSFER RECORD  
IN MY OFFICE THIS

BOOK 178 PAGE 678

30 DAY OF January A.D. 2014  
Amber R. Lambrecht  
COUNTY CLERK

To Whom It May Concern:

June 10, 2020

Raul and Lisa Rodriguez are requesting for a rezoning of property @ 1612 Colorado to be a commercial property.

The purpose for rezoning is to be able to build a shop. Currently the lot is empty, but with the rezoning we will be building a shop, which will then also beautify Goodland. We do currently have water and an electricity pole for when we work on the empty lot.

For any further questions you may contact me @ 806-336-8732.

Thank you for your time.

Raul & Lisa Rodriguez

A handwritten signature in cursive script, appearing to read "Lisa Rodriguez", written in dark ink.

QuickRefID	PropertyNumber	LegalDescr	PartyName	PartyAddre	SubUnit	SubBlock
				820 W		
R3348	091-154-19-0-30-04-006.00-0	SHARP'S AI BOLL, WAY		16TH ST		4
				820 W		
R304137	091-154-19-0-30-04-006.01-0	SHARP'S AI BOGART, V		16TH ST		4
				1530		
R3349	091-154-19-0-30-04-007.00-0	SHARP'S AI WILLIAMS, TEXAS				4
				920 W		
R3357	091-154-19-0-30-05-005.00-0	SHARP'S AI BRYCE, MA		16TH ST		5
				904 W		
R3358	091-154-19-0-30-05-006.00-0	SHARP'S AI BENNETT, (		16TH ST		5
				1518		
R3359	091-154-19-0-30-05-007.00-0	SHARP'S AI ABBOTT, LY		COLORAD		5
				905 W		
R3380	091-154-19-0-30-08-001.00-0	SHARP'S AI SOTO, JOSE		16TH ST		8
				1603		
R3381	091-154-19-0-30-08-002.00-0	SHARP'S AI WALKER, D		WYOMIN		8
				PO BOX		
R3382	091-154-19-0-30-08-003.00-0	SHARP'S AI POLING, TI		867		8
				PO BOX		
R3383	091-154-19-0-30-08-004.00-0	SHARP'S AI GARCIA, RI		453		8
				PO BOX		
R3384	091-154-19-0-30-08-005.00-0	SHARP'S AI GARCIA, AI		1000		8
				PO BOX		
R3385	091-154-19-0-30-08-006.00-0	SHARP'S AI GARCIA, AI		1000		8
				PO BOX		
R3386	091-154-19-0-30-08-007.00-0	SHARP'S AI GARCIA, AI		1000		8
				1624		
R3387	091-154-19-0-30-08-008.00-0	SHARP'S AI REYNA, JIV		COLORAD		8
				1624		
R3388	091-154-19-0-30-08-009.00-0	SHARP'S AI REYNA, JIV		COLORAD		8
				1624		
R3389	091-154-19-0-30-08-010.00-0	SHARP'S AI REYNA, JIV		COLORAD		8
				902 E 8TH		
R3390	091-154-19-0-30-08-011.00-0	SHARP'S AI RODRIGUE		ST		8
				1506		
R3391	091-154-19-0-30-09-001.00-0	SHARP'S AI HOWARD, KANSAS				9
				PO BOX		
R3392	091-154-19-0-30-09-001.01-0	SHARP'S AI BOHL, MAF		207		9
				PO BOX		
R302663	091-154-19-0-30-09-001.01-A	SHARP'S AI BOHL, MAF		207		9
				817 W		
R3393	091-154-19-0-30-09-002.00-0	SHARP'S AI KRAYCA, D,		16TH ST		9
				Attn:		
R3394	091-154-19-0-30-09-003.00-0	SHARP'S AI HICKS, TRU		HICKS,		9
				611 W		
R3395	091-154-19-0-30-09-004.00-0	SHARP'S AI ROHR, THC		12TH ST		9
				Attn:		
R3396	091-154-19-0-30-09-005.00-0	SHARP'S AI 3W LLC		WHITE,		9

R3397	091-154-19-0-30-09-006.00-0	SHARP'S AI GOODLANI 59 PO BOX 3222	9
R3398	091-154-19-0-30-09-007.00-0	SHARP'S AI BARRICKLO SUNSET Attn:	9
R3399	091-154-19-0-30-09-008.00-0	SHARP'S AI VLI INC ISAAC, Attn: TAX	9
R3448	091-154-19-0-30-16-001.00-0	SHARP'S AI ADM - COL DEPT 3005	16
R305438	091-154-19-0-30-16-001.01-0	SHARP'S AI NUTRIEN A ROCKY	16



LegalDescr SitusAddress

SHARP'S AI 820 W 16TH ST, Goodland, KS 67735

SHARP'S AI 1523 COLORADO AVE, Goodland, KS 67735

SHARP'S AI 1530 TEXAS AVE, Goodland, KS 67735

SHARP'S AI 920 W 16TH ST, Goodland, KS 67735

SHARP'S AI 904 W 16TH ST, Goodland, KS 67735

SHARP'S AI 1528 COLORADO AVE, Goodland, KS 67735

SHARP'S AI 905 W 16TH ST, Goodland, KS 67735

SHARP'S AI 1603 WYOMING AVE, Goodland, KS 67735

SHARP'S AI 1613 WYOMING AVE, Goodland, KS 67735

SHARP'S AI 00000 WYOMING AVE, Goodland, KS 67735

SHARP'S AI 1625 WYOMING AVE, Goodland, KS 67735

SHARP'S AI 1629 WYOMING AVE, Goodland, KS 67735

SHARP'S AI 910 W 17TH ST, Goodland, KS 67735

SHARP'S AI 1626 COLORADO AVE, Goodland, KS 67735

SHARP'S AI 1624 COLORADO AVE, Goodland, KS 67735

SHARP'S AI 1620 COLORADO AVE, Goodland, KS 67735

SHARP'S AI 1612 COLORADO AVE, Goodland, KS 67735

SHARP'S AI 1602 TEXAS AVE, Goodland, KS 67735

SHARP'S AI 1606 TEXAS AVE, Goodland, KS 67735

SHARP'S AI 00000 TEXAS AVE, Goodland, KS 67735

SHARP'S AI 817 W 16TH ST, Goodland, KS 67735

SHARP'S AI 1613 COLORADO AVE, Goodland, KS 67735

SHARP'S AI 1615 COLORADO AVE, Goodland, KS 67735

SHARP'S AI 1623 COLORADO AVE, Goodland, KS 67735

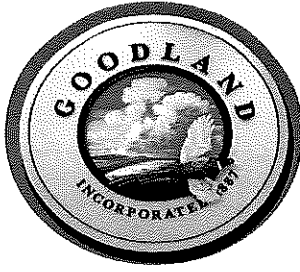
SHARP'S AI 00000 COLORADO AVE, Goodland, KS 67735

SHARP'S AI 804 W 17TH ST, Goodland, KS 67735

SHARP'S AI 1624 TEXAS AVE, Goodland, KS 67735

SHARP'S AI 1723 WYOMING AVE, Goodland, KS 67735

SHARP'S AI 00000 TEXAS AVE, Goodland, KS 67735



**City of Goodland Building Department**

204 W 11<sup>th</sup>

P.O. Box 59

Goodland, Kansas 67735

Phone: 785-890-4545

Fax: 785-890-4532

Brian.james@cityofgoodland.org

---

**Public Hearing for Zoning District Change (Rezoning)**

To Whom It May Concern and to all persons interested:

Notice is hereby given that at 5:00 pm on Monday – July 20<sup>th</sup>, 2020, the City of Goodland Commission, in the Second Floor Conference Room, at City Hall, 204 W. 11<sup>th</sup> Street, Goodland, Kansas, will consider the following application:


Case No. 070120

Zone change from the Single & Two Family Residential (R-1) district to the General Business (C-1) district for property legally described and generally located as follows:

*Lot three (3) and four (4) in Block eight (8) of Sharps Addition to the City of Goodland Sherman County Kansas more commonly known as 1612 Colorado*

As provided in the City of Goodland Article 9 – Zoning District Amendment (Rezoning) Procedure the above amendment will be discussed and considered by the City of Goodland Commissioners, and all persons interested in said matter will be heard at this time concerning their views and wishes; and any protest against any of the provisions of the proposed changes to the zoning regulation will be considered by the Commission. Property owners within 300 feet of such property described above, wanting to protest the proposed change will have fourteen days after the City Commission makes its recommendation regarding the requested rezoning to submit a protest petition to the office of the City of Goodland City Clerk. If a valid protest petition is filed with the City Clerk prior to the deadline, the change shall only be approved by a unanimous vote of the City Commission. Protest petitions are available in the Inspection and Code Enforcement Department of the City of Goodland.

Certified, this 12<sup>th</sup> day of June, 2020

  
\_\_\_\_\_  
Brian James Building Official

City of Goodland

204 W 11TH P O Box 59  
Goodland, KS 67735

Code	Description	Reference	Amount
GFMIS UEZ	MISC/REIMB MEMO : REZONING PERMIT FEE	RAUL AND LISA RODRIG	160.00
Total			160.00
CHK Received			160.00
Total Received			160.00
Change			.00

Clerk SS

Rcpt#

266225

6/12/20 09:52



ORDINANCE NO. 1731

AN ORDINANCE CHANGING THE ZONING CLASSIFICATIONS OR DISTRICTS OF CERTAIN LANDS LOCATED IN THE CITY OF GOODLAND, KANSAS, UNDER THE AUTHORITY GRANTED BY THE CITY OF GOODLAND, KANSAS ZONING REGULATIONS

BE IT ORDAINED BY THE GOVERNING BODY OF THE CITY OF GOODLAND, KANSAS:

SECTION 1. ZONING CHANGE. That having received a recommendation from the Building Official, and proper notice having been given and hearing held as provided by law and under the authority of and subject to the provisions of the City of Goodland, Kansas Zoning Regulations, the zoning classification or districts of the lands legally described hereby are changed as follows:

Zone changed from “R-1” Residential, Single-family and two-family district, to “C-1” General business district for property legally described and generally located as follows:

All of Lots Three (3) and Four (4) in Block Eight (8) of Sharp’s Addition to the City of Goodland, Sherman County, Kansas, according to the recorded plat thereof.

SECTION 2. ZONING MAP. That upon the taking effect of this Ordinance, the above zoning changes shall be entered and shown on the “Official Zoning Map” previously adopted by reference, and said official zoning map is hereby reincorporated as a part of the Zoning Regulation as amended.

SECTION 3. EFFECTIVE DATE. This ordinance shall take effect and be in force from and after its publication in the official City Newspaper.

PASSED AND ADOPTED this 20<sup>th</sup> day of July, 2020, by the Governing Body of the City of Goodland, Kansas.

\_\_\_\_\_  
John Garcia, Mayor

ATTEST:

\_\_\_\_\_  
Mary P. Volk, City Clerk