



CITY OF GOODLAND

P.O. Box 59 - 204 West 11th Street

785-890-4500

www.cityofgoodland.org

June 2016

Newsletter



Kansas Begins Here!

Help Goodland Qualify for Grants



SURVEY



Please find enclosed a survey from the City of Goodland. The city is hoping to qualify for various grants from the Kansas Department of Commerce to assist with community improvements.

One of the grant application requirements is for the city to conduct an accurate income survey of households in the service area who will benefit from the community improvements. The survey will be mailed to all households using Goodland utilities. The City asks that all surveys are returned to City Hall (drop box available), no later than **July 1, 2016**.

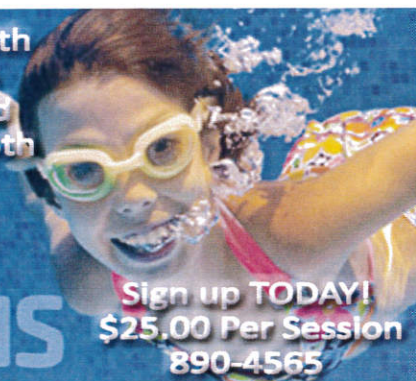
Survey information may only be checked by the Kansas Department of Commerce or by the Department of Housing and Urban Development so the survey remains confidential and NOT available for public view.

If you have any questions concerning the survey, please contact Suzanne McClure, Economic Development Director at 890-4500.

June 13th - June 24th
June 27th - July 8th
July 11th - July 22nd
July 25th - August 5th

SWIM LESSONS

Sign up TODAY!
\$25.00 Per Session
890-4565



Consumer Confidence Report



Your **2016 Consumer Confidence Report** covering 2015 is now available. This report is a snapshot of the quality of the water we provided last year, included are the details about where your water comes from, what it contains and how it compares to EPA and

state standards.

We are committed to providing you with information, because informed customers are our best allies. To view an electronic copy, please visit www.cityofgoodland.org. If you would like a paper copy, please contact the City of Goodland at 890-4500.



<https://www.facebook.com/cityofgoodland>



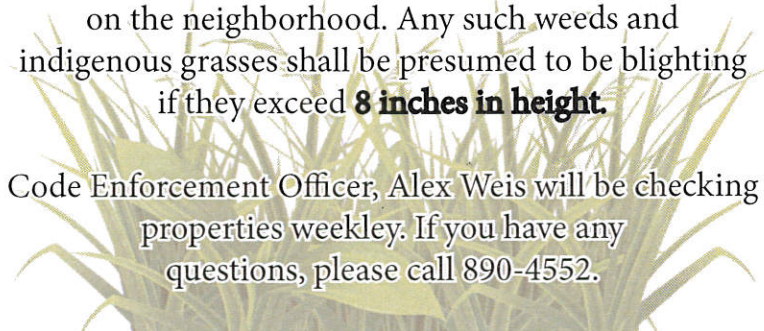
<https://www.cityofgoodland.org>

Code Spotlight

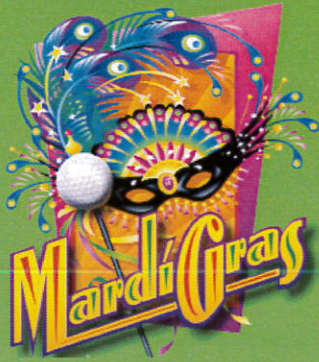
Section 7-502 Weeds and the Abatement thereof

Weeds and grasses on or about residential property which, because of its height, has a blighting influence on the neighborhood. Any such weeds and indigenous grasses shall be presumed to be blighting if they exceed **8 inches in height**.

Code Enforcement Officer, Alex Weis will be checking properties weekly. If you have any questions, please call 890-4552.



COME JOIN US FOR A KANSAS



Goodland Medical Foundation in celebrating 27 Years of the "SLICE OF LIFE"

Benefit Social and Auction

6:30 pm (MDT)

Friday, June 17, 2016

Goodland Elks Lodge, 1523 Arcade

Golf Tournament

Saturday, June 18, 2016

8:30 am (MDT) Shot Gun Start

Sugar Hills Golf Club

For more info call 890-2206 or 890-6036

Art Center Fun



Paintbrush &
Cocktails
June 10th @ 6 pm

\$30.00
for members
\$35.00
for
non-members

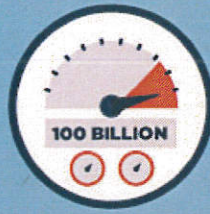
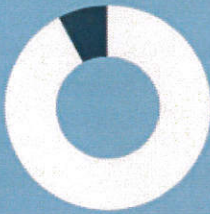
Call the Art Center at 890-6442
today to sign up!

The average American household contains about **40** constantly plugged in, power drawing electronic products

Standby power
accounts for

8%

ROUGHLY \$100
of household
electricity costs
each year!



That's 100 billion kWh
AND \$11 BILLION
in U.S. energy costs
spent powering
devices that aren't
being used!

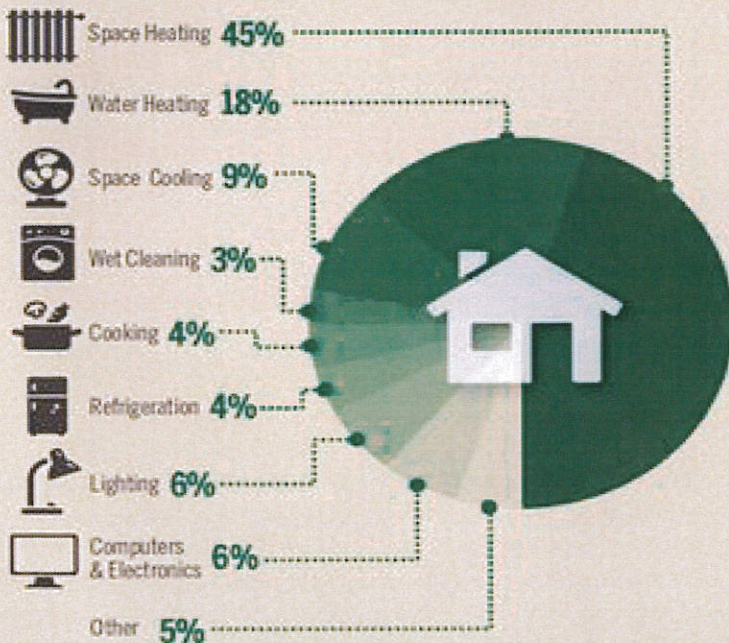
Paintbrush &
Pop & Popcorn
Saturday

June 11th @ 2 pm

\$15.00
for members
\$20.00
for
non-members



Where Your Energy Consumption Goes



An average household dedicates **6%**
of its energy budget to lighting.
Using new lighting technologies can
reduce lighting energy use in your
home by **50% to 75%**

Chamber News Corner



June 1 - June 13 there will be a special display at the High Plains Museum for individuals wanting to exhibit items with special importance for their family such as something handed down through the generations, household family antiques or any item that shows life from days gone by. Contact Sami Philbrick at the museum to display your items.

Driving Tours - June 5 tour of east half of county.
June 12 tour of west half of county.
Meet at the High Plains Museum at 1:30 pm.

Sponsored by: Celebrating 130 Years of Sherman County Committee